

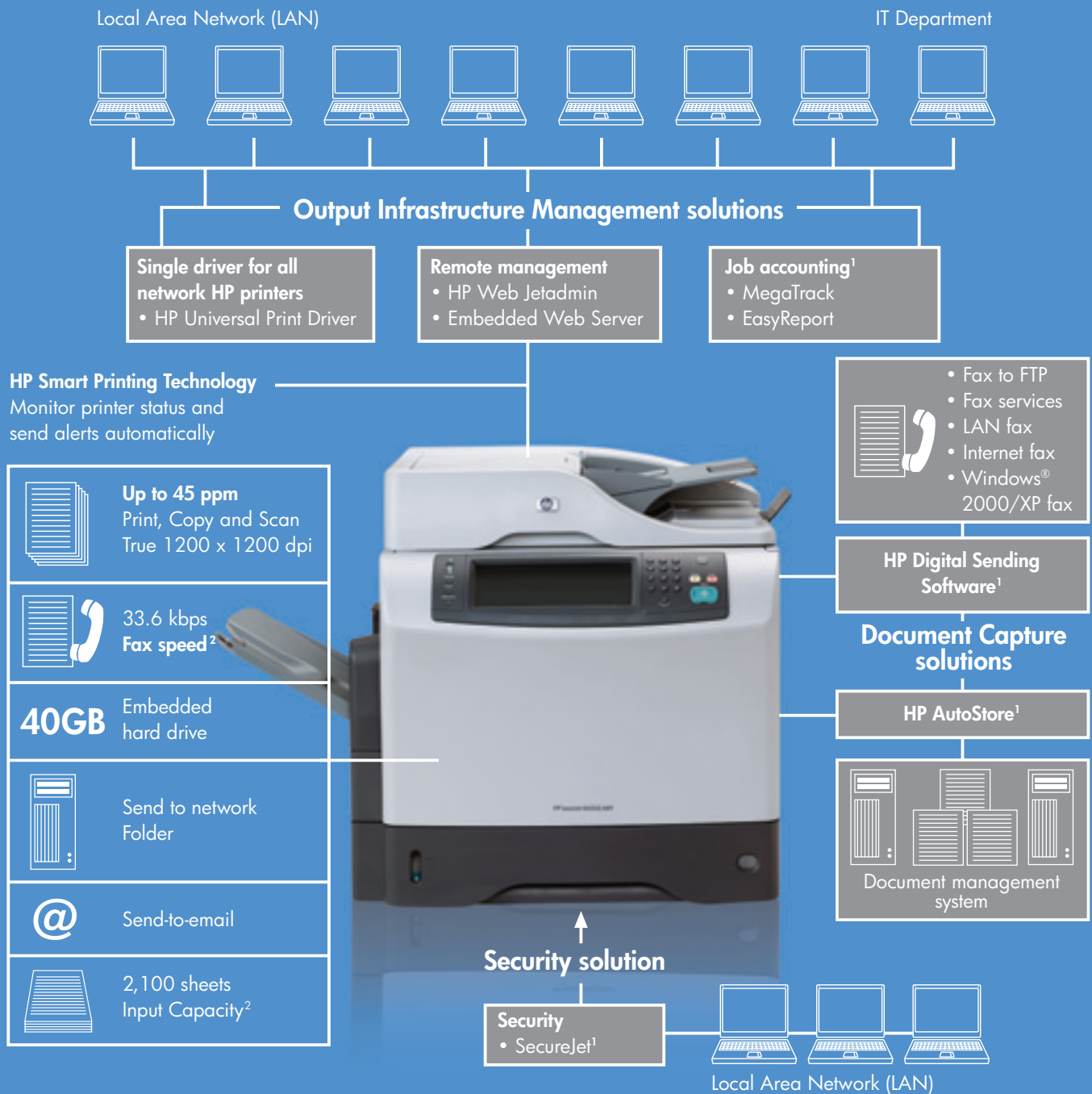


## HP LaserJet M4345 MFP series

A powerful, expandable and easy-to-use multifunction for busy workgroups



The new **HP LaserJet M4345 MFP series** is a compact yet feature-packed multifunction device with complete print, copy, fax and embedded send-to-email/network folder functionality. It also comes with network authentication and LDAP support, as well as advanced paper handling and finishing features. With enough room for solutions upgrades and extensions of functionality, this MFP is a high-productivity office solution for your business today.



### HP Services<sup>3</sup>



**Basic Support services**  
For businesses of all sizes



**Advanced Smart Print Services**  
Standardised, configurable, scalable services with predictable monthly payments



**Superior Managed Print Services**  
Fully customisable, comprehensive, scalable portfolio of services that allows you to optimise your imaging and printing environment

<sup>1</sup> Optional software.  
<sup>2</sup> Standard with M4345x.  
<sup>3</sup> Optional. See [www.hp.com/support](http://www.hp.com/support) for extended options.

# Take workgroup performance to new heights



## Do a whole lot more—in much less time

Enjoy printing and copying speeds of up to 45 ppm and zero warm-up time for fast first page out with Instant-on technology. Get professional-looking output with HP FastRes 1200 (for fast day-to-day printing) or HP ProRes 1200 (for true 1200 x 1200 dpi on important jobs). A 480 MHz processor with 256 MB standard RAM (expandable to 512 MB) and Memory Enhancement technology (MEt) facilitate quick completion of complex print jobs.

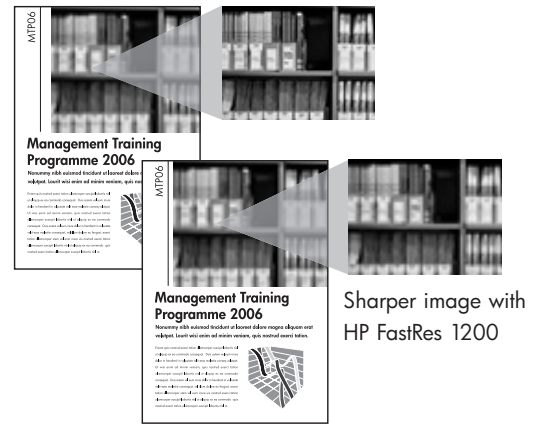
## Boost productivity with two-sided printing, copying and scanning

A 50-sheet Automatic Document Feeder (ADF) handily processes two-sided documents—enabling unattended copying and scanning, while eliminating the need to manually feed originals. And the automatic two-sided printing accessory gives you duplexed output and reduced office costs.

## Enhance the efficiency of your document workflow

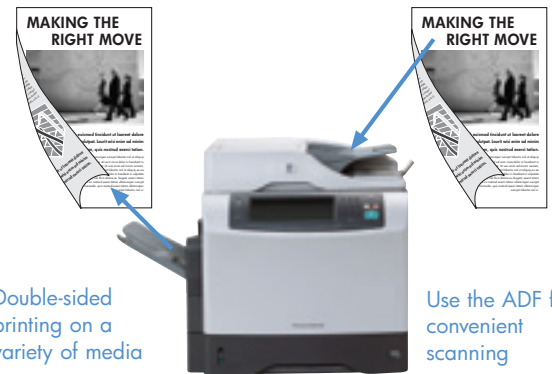
The MFP comes standard with send-to-email and network folder capability, network authentication and LDAP support. Enjoy even more heart-warming results with the HP Digital Sending Software<sup>1</sup> (DSS), which lets you send documents to ftp sites and fax services, including LAN fax, Internet fax, and Windows<sup>®</sup> 2000/XP fax services.

You can also revolutionise your document workflow with the optional HP AutoStore<sup>1</sup> server software—it effortlessly routes information to document management applications such as Microsoft<sup>®</sup> SharePoint Portal Server (version 2003), Microsoft<sup>®</sup> Exchange, and Lotus Notes.



Sharper image with HP FastRes 1200

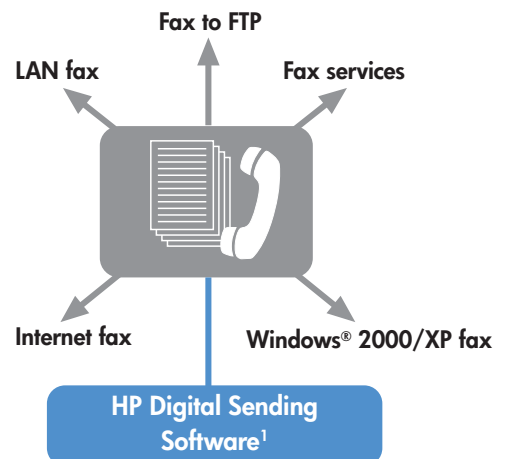
HP FastRes 1200 produces razor sharp prints



Double-sided printing on a variety of media

Use the ADF for convenient scanning

Save time and cost with Automatic Document Feeder (ADF) and two-sided documents



<sup>1</sup> Optional software. Sold separately.

Streamline workflow and improve productivity

# Engineered for simplicity—because time is money

## Concentrate on your business, not your printer supplies

Original HP LaserJet print cartridges use HP Smart printing technology<sup>1</sup> to keep you up and running. You'll receive alerts when supplies are low—HP SureSupply<sup>2</sup> makes re-ordering a breeze.

With a total input capacity of up to 2,100 sheets and the optional 75-sheet envelope feeder, you can also look forward to reduced user interaction. A real-time “pages remaining” counter lets you check if you have enough paper to complete your job.

## Complete peace of mind with best-in-class management

Enjoy hassle-free, reliable, best-in-class networking with the IPv6-ready<sup>3</sup> HP Jetdirect Fast Ethernet embedded print server. HP Web Jetadmin offers remote installation, configuration, and proactive management for all your networked peripheral. In addition, HP Embedded Web Server performs remote diagnostics, sends e-mail alerts, provides job tracking/accounting, and easy reordering of supplies.

## Easy network access and management— One driver for all<sup>4</sup>

The HP Universal Print Driver Series for Windows is a single, intelligent driver that replaces individual drivers for all HP networked printers. It greatly reduces IT professionals' time in managing end-user access to the print resources.

For more information and to download the driver for free, please go to [www.hp.com/go/universalprintdriver](http://www.hp.com/go/universalprintdriver).

## Configurable to your specific needs

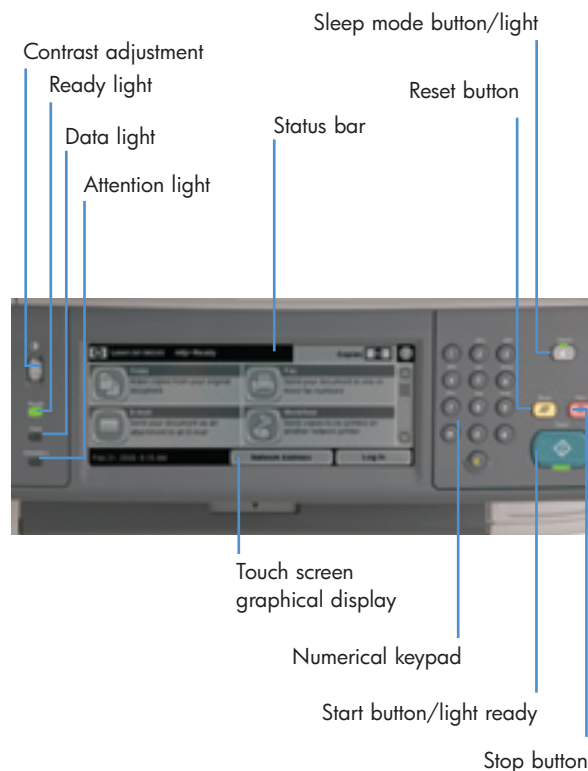
Access your MFP's complete feature set with an intuitive control panel that clearly displays all available applications. Easily find your way around with familiar Windows emulation icons and automatic navigation (that visually walks you through Troubleshooting), plus helpful installation wizards. What's more, the control panel is now localised in a variety of Asian languages<sup>5</sup>: Traditional Chinese, Simplified Chinese, Korean and Japanese.

## Frequently used documents with walk-up convenience

Save valuable time with the embedded hard drive. Use it to keep local copies of frequently used documents. The “proof and hold” feature allows user to check one copy before printing the rest—right from the control panel.



Networking features that IT department will appreciate



Walk-up convenience with intuitive control panel

<sup>1</sup> Using genuine HP supplies ensures availability of all HP printing features.

<sup>2</sup> Programme availability may vary by country. Internet access required. For more information, visit [www.hp.com/learn/suresupply](http://www.hp.com/learn/suresupply).

<sup>3</sup> IPv6 is only supported by Microsoft® Server 2003 and Windows® XP (print only).

<sup>4</sup> For supported HP printers only.

<sup>5</sup> Please check with your local HP office for availability.



# Room for all your needs, today and tomorrow

## A variety of options for your business

Enjoy more choice with market-leading HP and partner print solutions via open DIMM and EIO slots and a foreign interface port. Take your pick from an array of solutions that include wireless, Gigabit Ethernet, or IPsec compatible networking, additional fonts or memory, business process forms, barcode printing, document capture, job accounting and print security.

## Increase output capacity on the fly

For important presentations, you can create high-quality documents with a choice of advanced output options, including a stapler/stacker that can staple documents of up to 30 pages and stack up to 500 sheets. You can also go for a 3-bin mailbox for separating print, copy and fax functions, assigning mailboxes for users, or stacking up to 700 sheets.



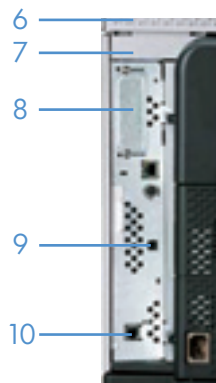
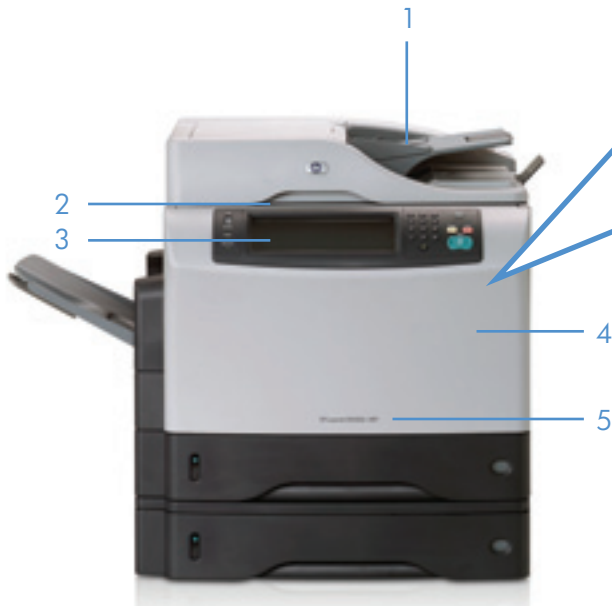
**EXPANSION CAPABILITIES**

- Wireless network
- Gigabit Ethernet
- IPsec compatible networking
- Additional fonts or memory
- Business process forms
- Barcode printing
- Document capture
- Job accounting
- Print security

Upgrade and outperform via the expansion slots

# HP LaserJet M4345 MFP series

- 1 50-sheet Automatic Document Feeder (ADF) automatically scans two-sided documents
- 2 Colour flatbed scanner for scanning, copying, and faxing jobs
- 3 Simple, intuitive touch-screen graphical control panel with numeric keypad provides effortless device interaction
- 4 100-sheet multipurpose tray handles heavy custom paper up to 200 g/m<sup>2</sup> (53 lb)
- 5 Automatic two-sided printing accessory for fast two-sided printing
- 6 40 GB, high-performance embedded hard disk for effective digital sending, private printing, and job storage
- 7 256 MB total memory and a powerful 480 MHz processor perform complex tasks quickly
- 8 Open EIO slot enables HP and partner solutions
- 9 Hi-Speed USB 2.0 port (type B) for direct connection
- 10 33.6 kbps analog fax accessory (RJ-11 port) (optional for M4345 MFP)



## Maximise your investment — HP accessories



**500-sheet input trays** offer an input capacity of up to 2,100 sheets



**75-sheet envelope feeder** makes business mailing simple and efficient



**Automatic two-sided printing** accessory for fast, efficient two-sided printing



**HP LaserJet MFP Analog Fax Accessory** quickly and securely processes documents



**HP Jetdirect ew2400 802.11g** wireless external print server allows easy network access without cables



**HP Jetdirect 635n IPv6/IPsec Print Server** with the latest in network security



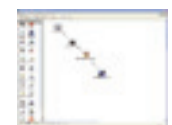
**HP Jetdirect 625n Gigabit Ethernet internal print server** Increase network bandwidth to gigabit speeds



**HP 1284B parallel card** Giving you the flexibility to continue to support parallel devices for compatible HP peripherals



**HP Digital Sending Software** lets you digitally capture paperbased documentation for easy routing and storage



**HP AutoStore software** to send scanned documents to document management and collaboration platforms



**Add memory** for up to 512 MB total memory

# Helping you get even more from your MFP

—solutions to enhance productivity and performance

## HP Web Jetadmin

This web-based print management solution helps you discover devices on the network and facilitates the pro-active management of devices. It also provides you “supply low” alerts, and enables remote monitoring and troubleshooting as usage report generation.

## HP Universal Print Driver— One Driver for all<sup>1</sup>

Available in your choice of HP PCL5 or HP postscript emulation, this unified driver for HP enterprise customers ensures easy driver deployment and management. It also helps apply print rules to all users on the network.

## Job Accounting Solutions (MegaTrack/MIPA/EasyReport)

Manage your print environment more efficiently with two real-time monitoring and control offerings—MegaTrack and EasyReport—that help you carry out a variety of tasks: capture print, copy, and fax activities; allocate printing costs; restrict usage (e.g. set print quota on colour); and detailed usage reporting.

- **MegaTrack In Printer Agent (MIPA)** gives your business the ability to record and monitor printer and MFP activity directly at the device, providing a precise accounting of printing functions. It can also be used to track copying, faxing and scan-to-email functions.

## Print Security (SecureJet)

This hardware and firmware solution offers you greater control over the security of your printed documents. It helps you secure sensitive print jobs against hacking during LAN transmission and authenticate users to ensure that only the right person gets the print job. It also lets you retrieve jobs from any SecureJet-enabled printer.

## Document Capture Solutions

**HP Digital Sending Software (optional)**—It allows you to authenticate users at device level—and send documents to email, folders, ftp, LAN-fax, printer or document OCR.

**HP AutoStore (optional)**—It helps you transform documents and integrate MFPs into your company workflow. It also facilitates information capture, transformation and routing to your Knowledge Management System and enables direct scanning into enterprise databases and applications.

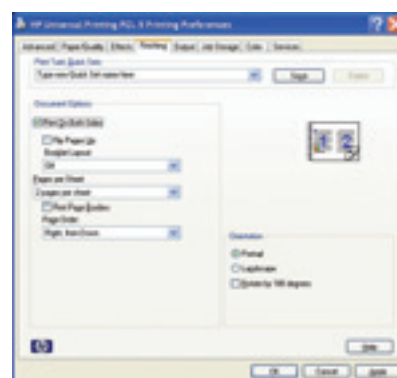
## HP Web Jetadmin process

From standard web browser:

- Track usage by user
- Install firmware
- Configure device
- Conduct remote diagnostics
- Organise devices



## Universal Print Driver



<sup>1</sup> For supported HP printers only.

# 100 million HP LaserJets shipped



No other company has supplied more printers to more people than HP. For more than 20 years now, HP has introduced an ever-widening range of innovative laser printing products. And now, HP celebrates the shipment of the 100 millionth HP LaserJet printer. HP printers offer proven reliability, award-winning service and support, and the broadest portfolio of printing solutions in the industry. All of which means you can count on the legendary quality and reliability of HP LaserJet printers.

# HP Smart Printing—helping you save time and money

Interactive HP Smart printing technology<sup>1</sup> in the HP print cartridge and device makes printer maintenance easier, faster and more cost-effective. It optimises print quality and reliability throughout cartridge life, sends alerts when supplies are low and provides pages remaining data, and enables convenient reordering of supplies through HP SureSupply<sup>2</sup>.



<sup>1</sup> Using genuine HP supplies ensures availability of all HP printing features.

<sup>2</sup> Programme availability may vary by country. Internet access required. For more information, visit [www.hp.com/learn/suresupply](http://www.hp.com/learn/suresupply).

## HP award-winning service and support

—ensuring low Total Cost of Ownership and peace of mind

HP's wide spectrum of Print Services offers you several efficient, flexible and cost-effective ways to manage output. Designed to be both affordable as well as fully scalable, these services range from assessment and strategy to complete outsourced management.

### Support services



#### Hardware repair services for HP printer products. Billed up front including:

- On-site
- Exchange
- Installation
- Technical Phone Support

#### When you need:

Reliable hardware repair service and access to technical phone support only.

#### It includes:

- Hardware repair

### Smart print services



A simple contract in a single, monthly invoice includes printers, supplies and support services based on actual device usage.

#### When you need:

A hassle-free acquisition method, monthly payment, simple contract with printers, supplies, and repair service.

#### It includes:

- Hardware repair
- Supplies fulfillment
- Choice of Single Function & Multifunction printers
- Leasing
- Maintenance kits

**Excellent durability and reliability**—HP has consistently received the top grade in PC Magazine Readers' Choice Award for service and reliability 14 years in a row<sup>1</sup>.

That's the kind of assurance you get with HP Printers.

<sup>1</sup> September 2005 PC Magazine Annual Reader Satisfaction Survey

### Managed print services



A comprehensive, scalable portfolio of services that can be easily customised to meet your specific requirements for an output strategy.

#### When you need:

Maximisation of your IT resources, cost control and optimisation of your output infrastructure.

#### It includes:

- Assessment and design services
- Onsite management services
- Deployment services
- Flexible payment models
- Choice of Single Function & Multifunction printers
- Supplies replenishment
- Remote monitoring



PC Magazine Readers' Choice Award for service and reliability for 14 years in a row.

PC Magazine Readers' Choice Award Logo is a trademark of Ziff Davis Publishing Holdings Inc. Used under license.

## Technical specifications



HP LaserJet M4345 MFP (CB425A)



HP LaserJet M4345x MFP (CB426A)

<b>Print and copy speed</b>	Up to 45 ppm letter, up to 43 ppm A4
<b>First page out</b>	Less than 10 seconds
<b>Resolution</b>	<b>Printing:</b> Up to 1200 x 1200 dpi; <b>Copying:</b> Up to 600 x 600 dpi; <b>Colour scanning:</b> Up to 600 dpi optical (up to 1200 dpi enhanced)
<b>Features</b>	<b>Copying:</b> Number of copies—up to 1000; Reduce or enlarge: 25 to 400% from scanner glass or ADF; staple collate, image and contrast adjustment, pages per sheet, booklet format, optimise text/picture, original size, job build, edge to edge, mixed original support; <b>Scanning:</b> Colour, flatbed, ADF; file types: PDF, JPEG, TIFF, MTIFF; <b>Faxing:</b> M4345 MFP—Optional analog fax accessory; M4345x MFP—Standard analog fax accessory: speed: up to 33.6 kbps; JBIG compression, fax forwarding, fax polling, auto redialing; <b>Digital sending:</b> Standard—Send-to-email, send to network folder, LDAP and SMTP authentication, LDAP addressing; File formats: PDF, JPG, TIFF, MTIFF; Optional HP Digital Sending Software, HP AutoStore
<b>Processor</b>	480 MHz
<b>Memory/storage</b>	256 MB DDR RAM (fixed), expandable to 512 MB via one open DDR DIMM slot; Memory Enhancement technology (MET); 40 GB hard disk
<b>Duty cycle</b>	Recommended monthly page volume <sup>1</sup> : 5,000–20,000 pages per month; duty cycle <sup>2</sup> : up to 200,000 pages per month
<b>Paper</b>	<b>Input:</b> M4345 MFP—One 100-sheet multipurpose tray 1, one 500-sheet input tray 2, one 50-sheet ADF; M4345x MFP—100-sheet multipurpose tray 1, two 500-sheet input trays (2 and 3), one 50-sheet ADF; <b>Output:</b> 500-sheet output bin; <b>Two-sided:</b> M4345 MFP—Manual; optional automatic accessory; M4345x MFP—Automatic two-sided printing accessory (duplexer); <b>Sizes:</b> 100-sheet multipurpose tray, 3-bin mailbox and stacker: 76 x 127 mm (3 x 5 inches) to 216 x 356 mm (8.5 x 14 inches), letter, legal, executive, statement, 8.5 x 13 inches, A4, A5, B5 (JIS), executive (JIS), 16K, D Postcard (JIS), envelopes (DL, C5, B5, No. 10, Commercial); 500-sheet trays: 148 x 210 mm (5.8 x 8.3 inches) to 16 x 356 mm (8.5 x 14 inches), letter, legal, executive, 8.5 x 13 inches, A4, A5, B5 (JIS), executive (JIS), 16K; ADF: 148 x 210 mm (5.8 x 8.3 inches) to 216 x 356 mm (8.5 x 14 inches), letter, legal, A4, A5; Flatbed scanner, up to 227 x 302 mm (8.9 x 11.9 inches); Custom sizes not supported on two-sided accessory, envelope feeder, or stapler; <b>Weight:</b> 100-sheet multipurpose tray, 3-bin mailbox: 16 to 53 lb (60 to 200 g/m <sup>2</sup> ); 500-sheet trays, automatic two-sided printing accessory, stapler/stacker, ADF: 16 to 32 lb (60 to 120 g/m <sup>2</sup> ); optional envelope feeder: 20 to 28 lb (75 to 105 g/m <sup>2</sup> ); <b>Types:</b> Paper (plain, preprinted, letterhead, prepunched, bond, recycled, colour, rough), transparencies, labels, envelopes, cardstock
<b>Connectivity</b>	<b>Interfaces:</b> M4345 MFP—One HP Jetdirect Fast Ethernet embedded print server; one Hi-Speed USB 2.0 port (type B); one foreign interface port, one open EIO slot; M4345x MFP—One HP Jetdirect Fast Ethernet embedded print server; one Hi-Speed USB 2.0 port (type B); one Foreign Interface port; one open EIO slot; one analog fax port; <b>Languages:</b> HP PCL6, HP PCL5e, HP postscript level 3 emulation, direct PDF printing (v 1.4); automatic language switching; <b>Fonts:</b> 80 scalable TrueType fonts; <b>Client operating systems:</b> Windows 2000, XP Home, XP Professional, XP Professional x64, Server 2003; Mac OS 10.2 and higher; <b>Network protocols:</b> IPv6: DHCPv6, HTTP, HTTPS, Port 9100, LPD, IPP, Secure IIP, MLDv6, ICMPv6; IPv4: FTP, IPP, Secure IPP, Auto-IP, Apple Bonjour Compatible, Telnet, SLP, IGMPv2, BOOTP/DHCP, WINS, SNMPv1/v2c/v3, TFTP, HTTP, HTTPS, Port9100, LPD; other: IPX/SPX, DLC, LLC, AppleTalk, Netware NDS, Binary, NCP
<b>Security</b>	Private print, HP Secure Storage Erase, network authentication (LDAP, SMTP), HP JetDirect—802.1x for wired networks, SNMPv3 and HTTPS, and Secure IPP (IPPS) and IPsec
<b>Dimensions (w x d x h)</b>	M4345 MFP—762 x 483 x 545 mm (30 x 19 x 21.5 inches); M4345x MFP—762 x 483 x 667 mm (30 x 19 x 26.3 inches)
<b>Weight</b>	M4345 MFP—53.5 kg (117.7 lb); M4345x MFP—63.9 kg (140.5 lb)
<b>Environmental ranges</b>	<b>Temperature:</b> Operating: 17 to 25° C (63 to 77° F); <b>Storage:</b> 13 to 38° C (50 to 99° F); <b>Relative humidity:</b> 30% to 70%, non-condensing
<b>Acoustics<sup>4</sup></b>	<b>Power emissions:</b> Active: 6.9 B(A) printing; 7.2 B(A) copying, Standby: Inaudible
<b>Power requirements<sup>5</sup></b>	110 to 127 VAC (±10%), 50/60 Hz (±2 Hz); 220 to 240 VAC (±10%), 50/60 Hz (±2 Hz)
<b>Power consumption<sup>5</sup></b>	Maximum: 600 watts (printing), 1265 watts (copying); Ready: 280 watts; Sleep: 24 watts; Off: 0.1 watts, Energy Star <sup>®</sup> and Blue Angel compliant Typical Electricity Consumption (TEC): 5.916 kWh/Week
<b>EMC compliance</b>	CISPR 22: 1993/EN 55022: 1994 Class B, EN 61000-3-2: 2000, EN 61000-3-3: 1995, EN 55024: 1998, FCC Title 47 CFR, Part 15 Class B/ICES-003, Issue 4/GB9254-1998, GB17625.1/2003, EMC Directive 89/336/EEC and the Low Voltage Directive 73/23/EEC, and carries the CE-Marking accordingly
<b>Safety compliance</b>	Argentina (TUV S Mark-Rs: 92/98/Ds:1009/98), Australia (AS/NZ 3260), Canada (cUL-CAN/CSA C22.2 No.60950-00), China (GB4943), EU (CE Mark-Low Voltage Directive 73/23/EEC), Germany (TUV: EN60950), IEC 60825-1), Russia (GOST: R50377), USA (UL-L 60950; FDA-21 CFR Chapter 1 Subchapter J for lasers), Class 1 Laser/LED Product.
<b>Warranty</b>	One-year, next day, on-site limited warranty plus free phone support during warranty
<b>HP SureSupply enabled</b>	To learn more, please visit <a href="http://www.hp.com/go/SureSupply">www.hp.com/go/SureSupply</a>
<b>What's in the box</b>	All models: straight power cord, control panel overlay, print cartridge, software and documentation on CD, inbox documentation: (Getting Started guide, Network Configuration guide, wall poster, support flyer) M4345x MFP: Also includes: phone cord, 500-sheet input tray 3, analog fax accessory, automatic two-sided printing accessory

<sup>1</sup> Based on standard ITU-T test image #1 at standard resolution. More complicated pages or higher resolution will take longer.

<sup>2</sup> HP recommends that the number of pages per month of imaged output be within the stated range for optimum device performance, based on factors including supplies replacement intervals and device life over an extended warranty period.

<sup>3</sup> Duty cycle is defined as the maximum number of pages per month of imaged output. This value provides a comparison of product robustness in relation to other HP LaserJet or HP Color LaserJet devices, and enables appropriate deployment of printers and MFPs to satisfy the demands of connected individuals or groups.

<sup>4</sup> Configuration tested: base model, simplex printing, A4 paper at an average of 45 ppm.

<sup>5</sup> Power requirements are based on the country/region where the printer is sold. Do not convert operating voltages. This will damage the printer and void the product warranty.

For more information, call your local Hewlett-Packard sales office or your nearest HP authorised dealer or visit us at [www.hp.com](http://www.hp.com)

HP customer information centre (for product information)	HP customer care centre (for post-sales service)
Australia 13 23 47	Australia 13 10 47
China 800 820 2255	China 800 810 3888
Hong Kong 800 93 8855	Hong Kong +852 3002 8555
India 1600 425 4999 (from MTNL/BSNL LAN line) 3030 4499 (from mobile)	India 1600 112 267
Indonesia 0800 1111 222	Indonesia +62 21 350 3408
Korea 080 703 0700	Korea +82 23270 0700
Malaysia 1800 88 4848	Malaysia 1800 805 405
New Zealand 0800 733 547	New Zealand 0800 449 553
Philippines 1800 1441 6688	Philippines +63 2 867 3551
Singapore 1800 278 8100	Singapore +65 6 272 5300
Taiwan 0800 236 686	Taiwan +886 2 8722 8000
Thailand +662 353 9000	Thailand +662 353 9000
Vietnam +848 823 6215	Vietnam +848 823 4530

For the following countries, please fax your queries to: +65 6275 6707

• Bangladesh • Bhutan • Brunei • Cambodia • Maldives • Nepal • Pakistan • Sri Lanka



© 2006 Hewlett-Packard Development Company, L.P. The information contained herein is subject to change without notice and is provided "as is" without warranty of any kind. The warranties for HP products are set forth in the express limited warranty statements accompanying such products. Nothing herein should be construed as constituting an additional warranty. HP shall not be liable for technical or editorial errors or omissions contained herein. Intel and Pentium are U.S. registered trademarks of Intel Corporation. Microsoft and Windows are U.S. registered trademarks of Microsoft Corporation.

Printed in Singapore, 2001-8587-EEP, September 2006

## Ordering information

Product	
CB425A	HP LaserJet M4345 MFP
CB426A	HP LaserJet M4345x MFP
Paper handling	
Q5968A	500-sheet input feeder tray
Q5969A	Automatic two-sided printing accessory (for HP LaserJet M4345 MFP only)
Q2438B	75-sheet envelope feeder
Supplies	
Q5945A	HP LaserJet black print cartridge with Smart Printing Technology, 18,000 page yield*
Q6496A	ADF replacement Mylar sheets
Q5997A	ADF maintenance kit
Q5998A	HP printer maintenance kit (110 V)
Q5999A	HP printer maintenance kit (220 V)
Connectivity	
J7960G	HP Jetdirect 625n Gigabit Ethernet internal print server
J7961G	HP Jetdirect 635n IPv6/IPsec internal print server
J7951G	HP Jetdirect ew2400 external Fast Ethernet wired and wireless 802.11g print server
J7989G	HP high-performance serial ATA EIO hard disk
J7972G	HP 1284B Parallel Card
Memory	
Q7718A	128 MB 100-Pin DDR DIMM
Q7719A	256 MB 100-Pin DDR DIMM
Software and accessories	
Q3701A	HP LaserJet MFP analog fax accessory
T1936AA	HP Digital Sending Software
T1943AA	HP AutoStore software
Solutions	
See the Global Solutions Catalog: <a href="http://www.hp.com/go/gsc">www.hp.com/go/gsc</a>	
HP papers	
Asia Pacific: <a href="http://www.hp.com/apac/printingsupplies">www.hp.com/apac/printingsupplies</a>	
Asia: 65-6253-8500	
Australia and New Zealand: 61-2997-2299LAR	

**HP Customer Care**  
HP Customer Care's award-winning support, reliability and the exciting solutions are available via phone, Customer Care Centre and also online at [www.hp.com/support](http://www.hp.com/support).

To start enjoying all the benefits provided for you, log on to [www.hp.com/apac/register](http://www.hp.com/apac/register) to register your HP product online.

\* Average cartridge yield: 18,000 standard pages. Declared yield value in accordance with ISO/IEC 19752.

