

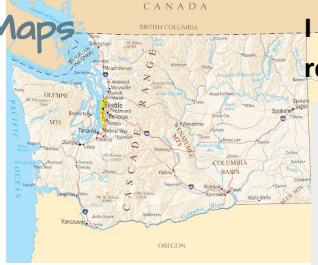
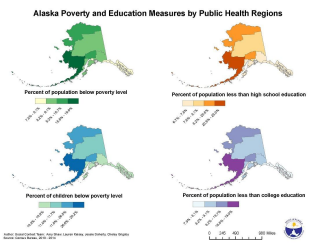
# Unit 1 Thinking Geographically



## APHuG Exam Review

# 1.1 Introduction to Maps

I can identify maps and information on maps



I can identify spatial patterns and relationships portrayed in maps

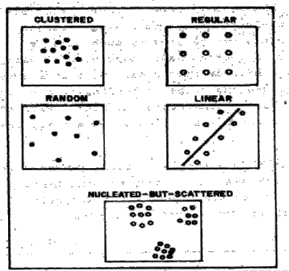
## 3. absolute and relative directions:

absolute direction: north, south, east, west  
relative direction: "the middle east," "west coast," "deep south"

## 4. absolute and relative distance:

absolute distance: cm, km, miles  
relative distance: measured by time

Clustering  
Dispersal  
Elevation



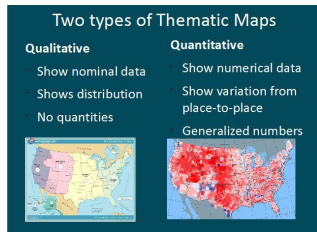
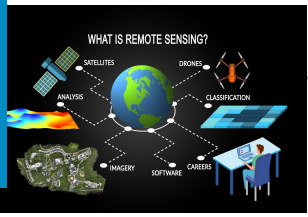
I can identify how map projections distort spatial relationships

Map projection examples are LOCATED IN YOUR GRAND REVIEW

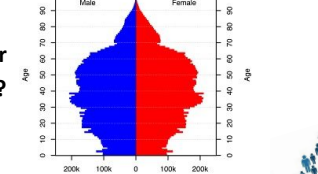
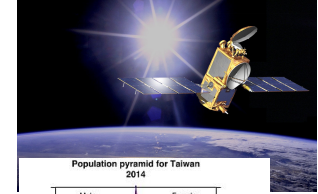


# 1.2 Geographic Data

I can identify different methods of geographic data collection



# 1.3 The Power of Geographic Data

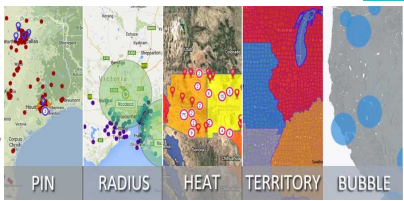
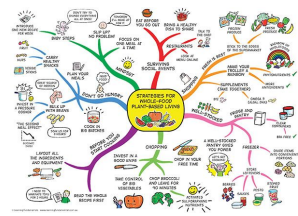


What do you think?



Qualitative or Quantitative?

## GIS vs Remote Sensing



Visual Mapping / Online Mapping

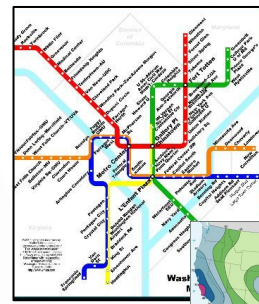
I can explain how these are used for decision making purposes by the following:

- \_\_\_\_\_
- \_\_\_\_\_
- \_\_\_\_\_

I can explain the geographical effects of decisions made using geographical information such as:  
\_\_\_\_\_ & \_\_\_\_\_

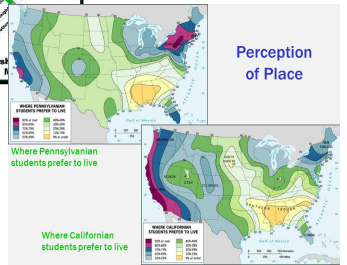
I can define major geographic concepts that illustrate spatial relationships

- Absolute and relative locations



PLACE

- FLOW





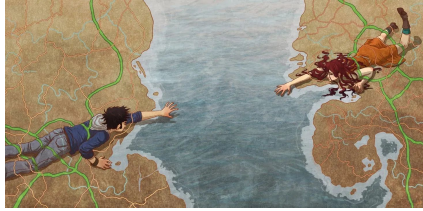
## 1.4 CONTINUED

### Space-time compression:

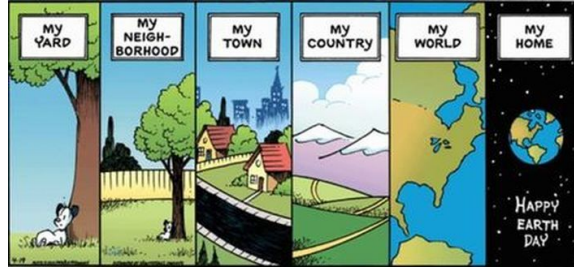
- The reduction in time it takes for something to reach another place
- Because of technology, connections have reduced distance (not literally in miles, but in space)



### Distance decay



## 1.6 Scale of analysis



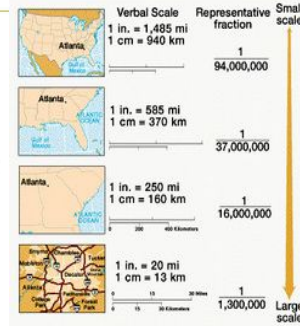
I can define scales of analysis used by geographers

○ \_\_\_\_\_ ○ \_\_\_\_\_

○ \_\_\_\_\_ ○ \_\_\_\_\_

### Maps Scale

- Larger the area shown  
□ = smaller scale
- Smaller the area shown  
□ = larger scale



I can explain what scales of analysis reveal

○ \_\_\_\_\_

○ \_\_\_\_\_

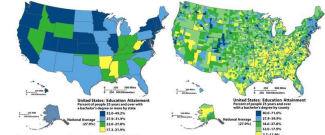
○ \_\_\_\_\_

## 1.7 Regional Analysis

I can identify and explain the types of regions

Regional Analysis

- Formal regions
- Functional regions
- Perceptual regions



Petroleum Administration for Defense Districts



I can describe different ways that geographers define regions

○ \_\_\_\_\_

○ \_\_\_\_\_

I can explain how geographers apply regional analysis at local, national, and global scales

Pneumatic Emergency Ventilator Market 2020: Global and Regional Analysis by Top Key Market Players, Key Regions, Product Segments, and Applications by 2026

GLOBAL MARKET SIZE 2020



## 1.5 Human Environment Interaction

### Environmental

Environment determines Cultural Factors

### Environmental

Environment selective of Cultural Factors Limits

I can explain theories about how humans interacted with natural environments

I can explain how major geographic concepts illustrate spatial relationships.



○ \_\_\_\_\_

○ \_\_\_\_\_

○ \_\_\_\_\_