



## Weekly Bulletin February 21-24

(Please post & share with students daily during 3<sup>rd</sup> and 4<sup>th</sup> period)

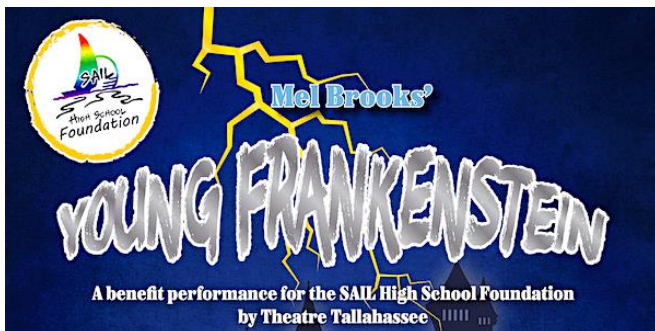
February	20	Presidents' Day – NO SCHOOL
	21-23	FSA ELA Retakes
	27-28	Algebra 1 Retakes
March	1	SAT for ALL 11 <sup>th</sup> Graders
	6-10	<b>INTENSIVE WEEK</b>
	13-17	<b>SPRING BREAK</b>
	23	Young Frankenstein for SAIL Foundation



Shout out to SAIL Drama Club!

Thanks for an amazing, suspenseful adventure!

## WEEKLY ANNOUNCEMENTS



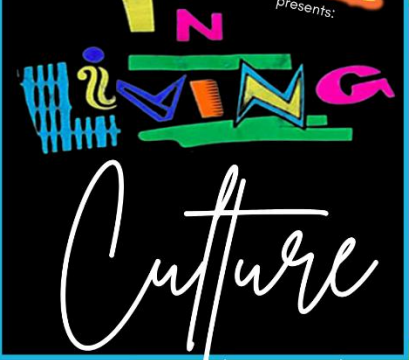
The SAIL Foundation is having a benefit performance-

**When:** Thursday, March 23 @ 8 pm

**Where:** Theatre Tallahassee on Thomasville Rd.


**Cost:** \$18 for SAIL students and teachers, \$25 for general admission

<https://www.eventbrite.com/e/sail-high-school-foundation-young-frankenstein-benefit-performance-tickets-527874225017>


<p><b>M</b> February 20 President's Day <b>NO SCHOOL</b> <i>Community Service Day</i> Come by and help us PREP the campus for the week's festivities!</p> <p><b>Sign-up in the Main Office</b></p>	<p><b>T</b> February 21 <i>Highlight Greatness</i> Wear NEON colors to show support contributions made by African Americans to the Arts. <b>African Dance Performance by Special Guests!</b></p>	<p><b>W</b> February 22 <i>Marvel Day</i> Wear your favorite Marvel character &amp; costume! <b>CHALK WALK</b> (during lunch) <b>MOVIE TIME</b> <i>Wakanda Forever</i> 2:00 pm - Media Center FREE ENTRY w/ Coat Donation Concessions will be available for purchase.</p>
<p><b>T</b> February 23 <i>HBCU Day</i> Wear a T-shirt from your favorite HBCU or college. <b>Special Lunch Performances from NPHC organizations:</b></p> <ul style="list-style-type: none"> <li>Alpha Phi Alpha Fraternity, Inc.</li> <li>Alpha Kappa Alpha Sorority, Inc.</li> <li>Omega Psi Phi Fraternity, Inc.</li> <li>Zeta Phi Beta Sorority, Inc. and many more!</li> </ul> <p><b>Door Decorating Contest - Theme: HBCU Pride!</b> <b>WINNER ANNOUNCED AT LUNCH!</b></p>	 <p><i>Additional Activities include:</i> DAILY TRIVIA &amp; PRIZES</p> <ul style="list-style-type: none"> <li><b>Fri. Feb. 3</b> - Special Lunchtime Performance by James S. Rickards Marching Raider Band &amp; Sweet Food Samples! o A special visit from "The Sonnet Man"</li> <li><b>Mon. Feb. 27</b> - Music Ensemble Performance BSU/NHS Visit the Meek-Eaton Archives</li> <li><b>Tues. Feb. 28</b> - TED Talk - Attorney Charles Gee o Soul Food Lunch in Cafeteria</li> </ul>	<p><b>F</b> February 24 <i>Black Friday</i> It's a BLACKOUT. Wear all Black! <b>Special Lunch Performance by the Legacy Band</b> BOBR Poetry Show 12:25 pm - 1:05 pm 1:20 pm - 2:00 pm</p>

**SENIORS ONLY**

**PLEASE SUBMIT YOUR BABY PICTURES FOR THE YEARBOOK!!!**



**Deadline: February 10, 2023**  
<https://forms.office.com/r/JBdqRnQZ8x>




**CASINO**

<p>Tickets on sale Feb. 1st to 28th for \$25</p>	<p>Takes place May 12th from 7 pm to 10pm.</p>
--	--

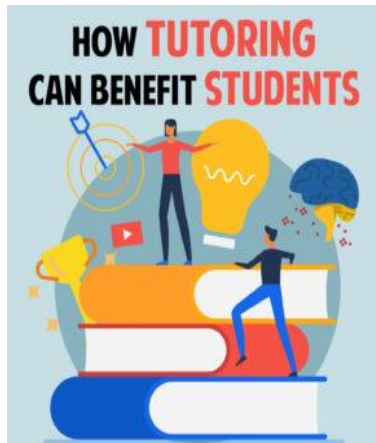
# MONTHLY AIR HOCKEY TOURNAMENT

**When:** 1<sup>st</sup> Wednesday of the month (lunchtime)

**Where:** Gym

**Why:** Food Donation collection (canned goods)

**What else...** You will get Volunteer service hours! Winner gets 5 Doubloons!



**TUTORING IS BACK** in the Media Center!

Mondays and Wednesdays until 4 pm

Thursdays and Fridays until 3:15 pm

**You can:**

- Get help with Math, Science, English, Social Studies, and more
- Study independently
- Work on group assignments with your group
- Work on the computers
- Print in color or black and white



<u>Day of the Week</u>	<u>Time</u>	<u>Club</u>	<u>Location</u>
<b>MONDAYS</b>	2:15-3:00	<b>Soccer Club</b>	Upper Field
	2:00-4:00	<b>Drama Club</b> Black Box	
	2:15-4:00	<b>Cheerleading Practice</b>	
<b>TUESDAYS</b>	7:30-7:55	<b>Morning Fitness Club</b>	Susanna's Room
	Lunch	<b>Florida Christian Athletes</b>	Marcia's Room
<b>WEDNESDAYS</b>	7:30-7:55	<b>Morning Fitness Club</b>	Susanna's Room
	Lunch	<b>Rainbow Club</b>	Susanna's Room
	Lunch	<b>NHS</b>	Media Center
	2:15-4:00	<b>Volleyball</b>	Gym
	2:00-4:00	<b>Drama Club</b> Black Box	
	2:15-4:00	<b>STEAM Club</b>	Jasun's Room
<b>THURSDAYS</b>	7:30-7:55	<b>Morning Fitness Club</b>	Susanna's Room
	2:15-4:00	<b>Cheerleading Practice</b>	Marcia's Room
	2:15-3:15	<b>Dance Club</b>	Yoga Room
	2:15-4:00	<b>D &amp; D Club</b>	Chris W's Room
	2:15-3:45	<b>Ultimate Frisbee</b>	Jasun's Room

**FRIDAYS**

Lunch  
2:15-3:30  
2:15-4:00

**Black Student Union**  
**Chess Club**  
**Anime Club**

Marcia's Room  
Mike's Room  
Rosa's Room