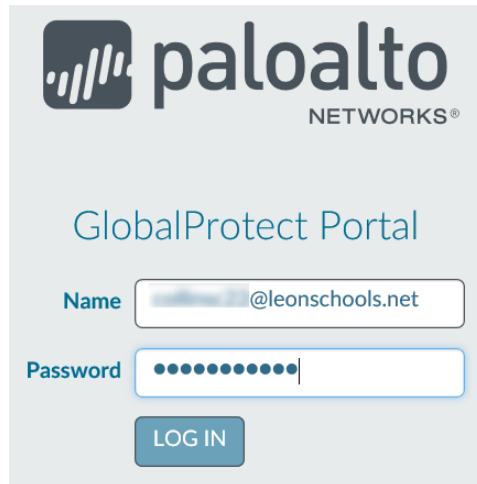


VPN

You can access <https://vpn.leonschools.net> from the LCSB network to download the installer, but you will not be able to connect to the VPN from the LCSB network. You can only connect to VPN off LCSB network.

How to Setup VPN (Windows)

- Open a web browser and type **https://vpn.leonschools.net** in the address bar
- On the portal login page, enter your email address and password



- Select either the 32 bit or 64 bit (depending on your computer configuration) GlobalProtect Agent



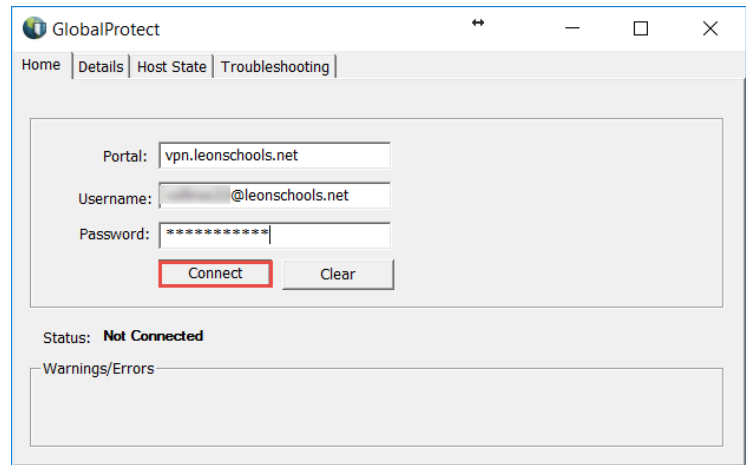
- Select Run on the .msi download prompt



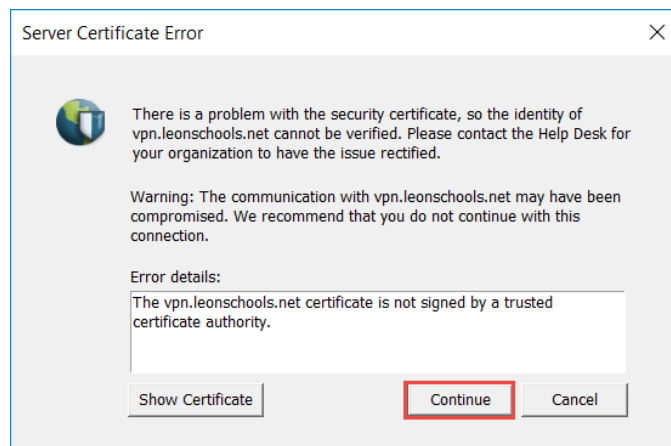
- On the Welcome Wizard screen, select Next
- On the Installation Folder screen, select Next
- On the Confirm Installation screen, select Next
- Close the Wizard once you see Installation Complete

- The Global Protect Connection screen will appear, enter the Portal Name, Username, and Password and select Connect

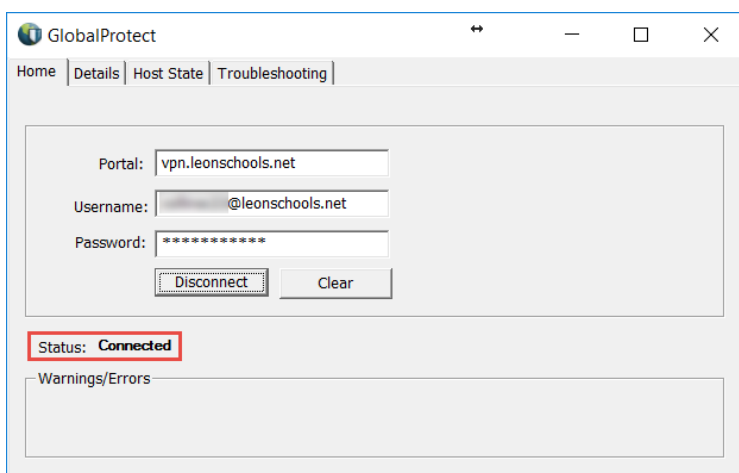
- Portal: vpn.leonschools.net
- Username: Full Email Address
- Password: Password



- You may receive a Server Certificate Error, select Continue on this screen



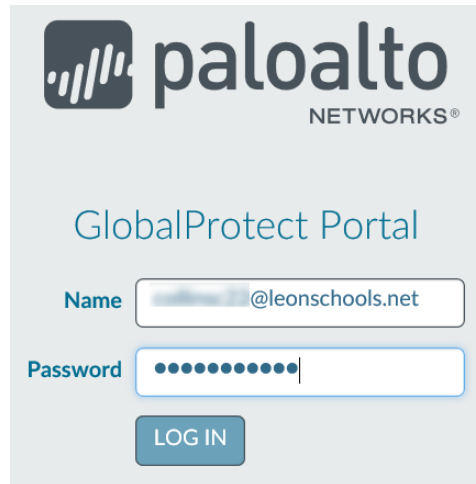
- You should then see the status of Connected on the GlobalProtect Connection Screen, you will also see an Earth and Shield icon in your Icon Tray.



- To Disconnect, either select Disconnect on the Global Protect Connection Screen or Right Click on the Global Protect Icon and select Disconnect

How to Setup VPN (Mac)

- Open a web browser and type **https://vpn.leonschools.net** in the address bar
- On the portal login page, enter your email address and password



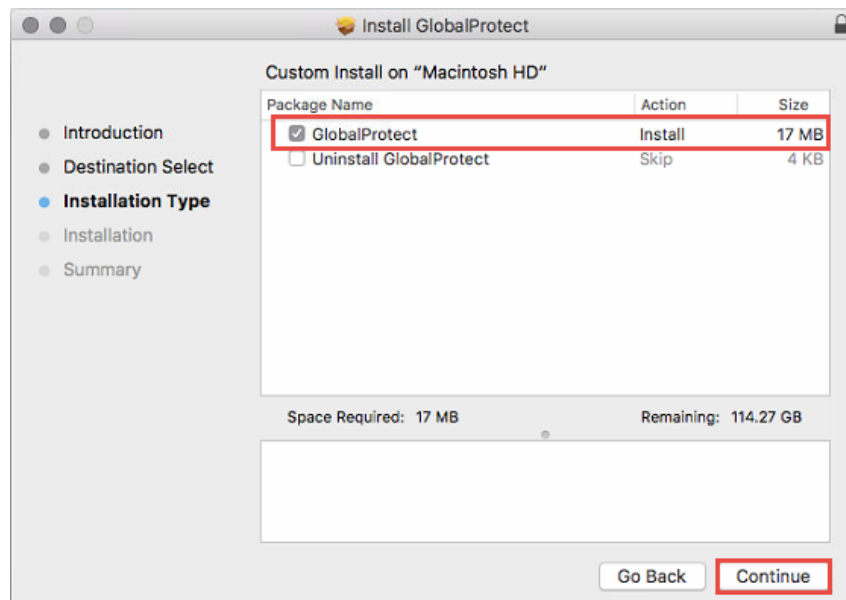
The image shows the Paloalto Networks GlobalProtect Portal login page. At the top is the Paloalto Networks logo. Below it is the text "GlobalProtect Portal". There are two input fields: "Name" with a pre-filled email address ending in "@leonschools.net" and "Password" with masked characters. A "LOG IN" button is located below the password field.

- Select the Mac 32/64 GlobalProtect Agent Download



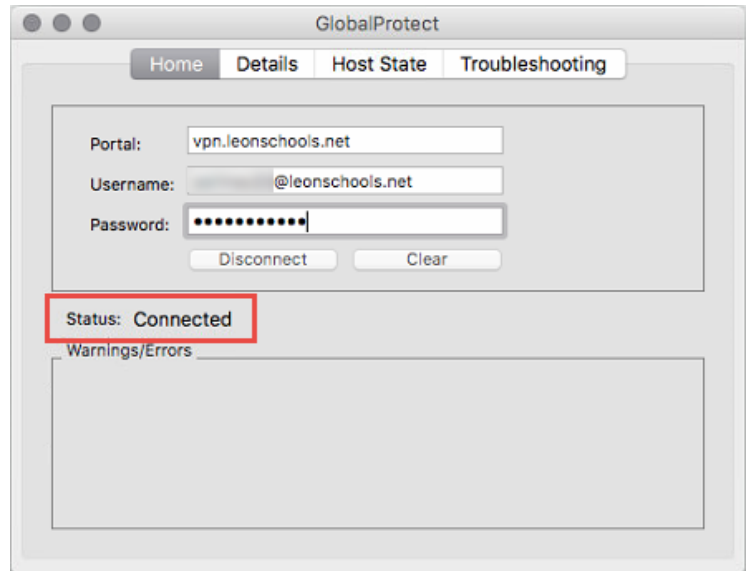
The image shows the GlobalProtect Portal download options page. It features three links: "Download Windows 32 bit GlobalProtect agent", "Download Windows 64 bit GlobalProtect agent", and "Download Mac 32/64 bit GlobalProtect agent". The Mac link is highlighted with a red box. Below the links, there are instructions for each OS type: "Windows 32 bit OS needs to download and install Windows 32 bit GlobalProtect agent.", "Windows 64 bit OS needs to download and install Windows 64 bit GlobalProtect agent.", and "Mac OS needs to download and install Mac 32/64 bit GlobalProtect agent."

- Double Click on the GlobalProtect.pkg to open and run the installer, select GlobalProtect Install, select Continue



- Once it has successfully installed the Agent, the GlobalProtect Connection will appear. After providing the required information, select Connect, once successfully connected the status will show connected.

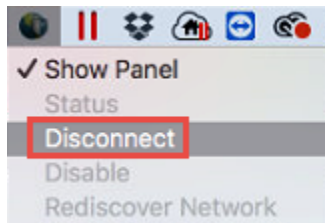
- Portal: vpn.leonshcools.net
- Username: Full Email Address
- Password: Password



- You will also see a small Earth and Shield Icon on the Menu Bar.



- To Disconnect, select the VPN Icon (above), select Disconnect.



You can access <https://vpn.leonschools.net> from the LCSB network to download the installer, but you will not be able to connect to the VPN from the LCSB network. You can only connect to VPN off LCSB network.