

Skyward User's Manual




Skyward School Business Suite,
Citrix Metaframe Win7/IE11 solution -

Prepared for
Leon County School District

Date: April 29, 2015
Version 1.0



Log in 
User name: <input type="text"/>
Password: <input type="password"/>
Advanced Options >>>
<input type="button" value="Log In"/>

Welcome

Welcome to the ISCorp site for the Skyward application.

Message Center

If you are required to change your password (or choose to change it), the requirements are:

Passwords must include at least one number, one uppercase character, a
8 characters in length. You may not use part of your name or organization.
You also may not use a previous password.

The latest Citrix clients may be downloaded from [here](#)



TABLE OF CONTENTS

PaC - CITRIX Metaframe and Win7 with IE11 Solution.....	3
Solution #1 – Install Firefox	3
Solution #2 – Fix the file association	3

DOCUMENT CONTROL

Author		Skyward Management Team	
Title		Citrix Metaframe Win7/IE11 solution	
File Name		Document1	
Milestone		End User Training	
Last Edited		4/29/2015 9:11 AM	
Number of Pages		7	
Version	Revision Date	Revision Comments	Author
1.0	3/30/2015	Created Document	Scott Whittle

PaC - CITRIX Metaframe and Win7 with IE11 Solution

Some employees are experiencing problems with signing on to PaC with Win7 OS and IE11. The common problem seems to be the ICA file association is being corrupted or lost randomly.

Listed below are two solutions.

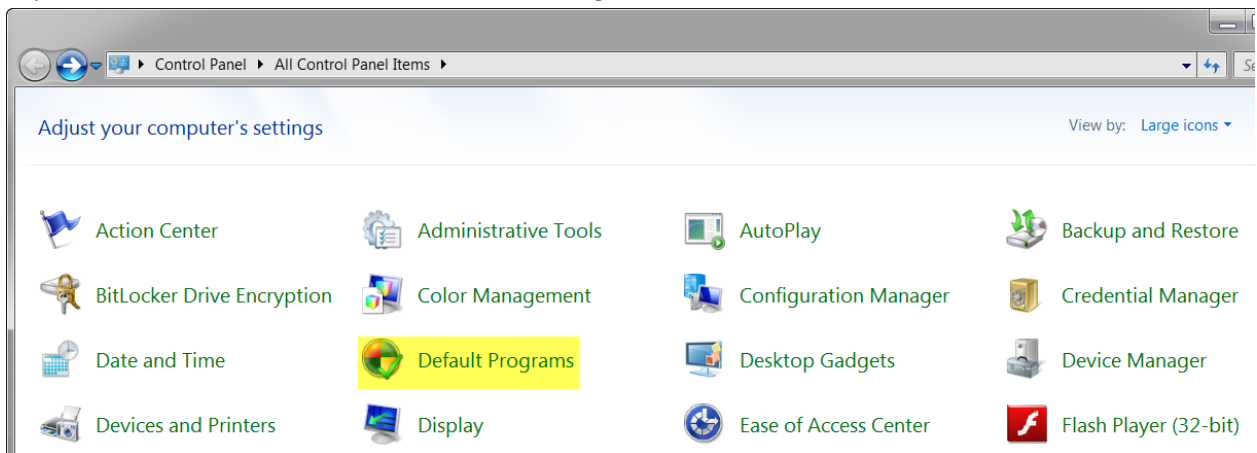
Solution #1 – Install Firefox

- 1) Install Firefox Extended Support Release (ESR)

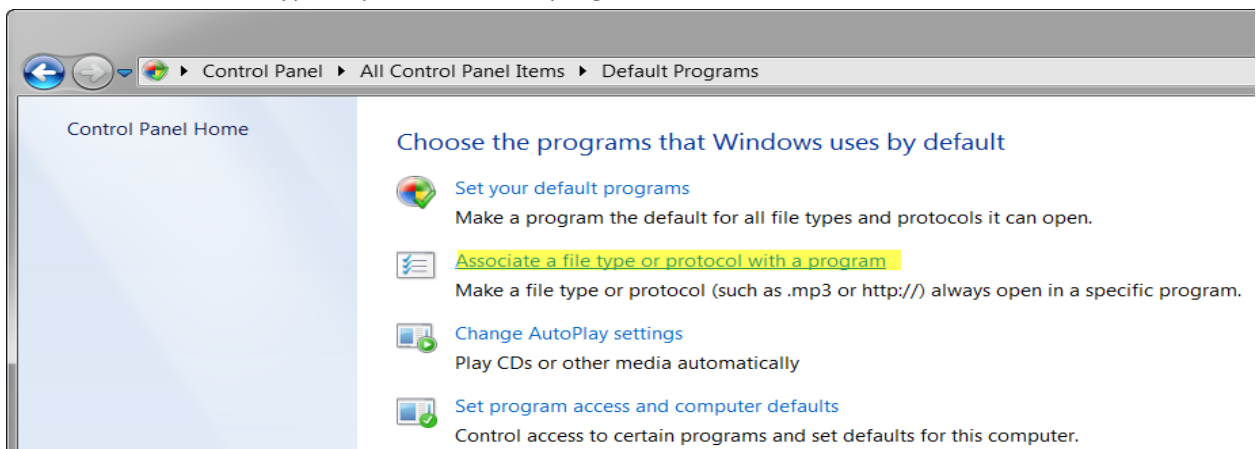
It is available through SCCM by request or from <\\tis-altiris\Images\CD\Firefox ESR 31>. There are configuration files and settings that are applied when installed using the installFF31.0W7.BAT.

Solution #2 – Fix the file association

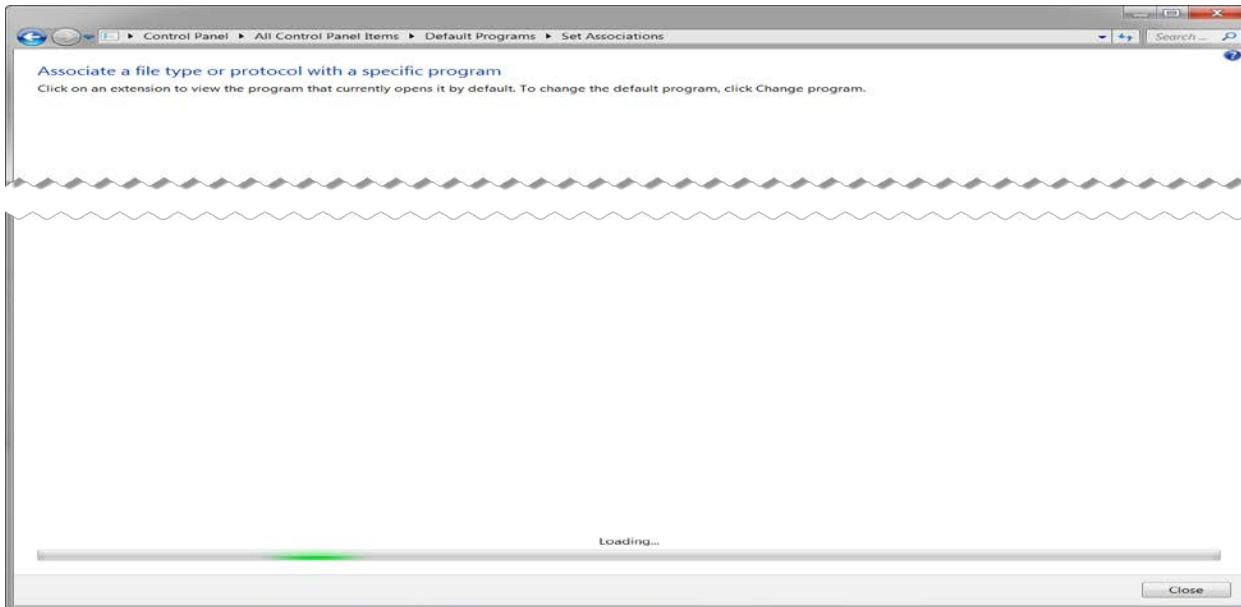
- 1) Open the Control Panel then click on Default Programs.



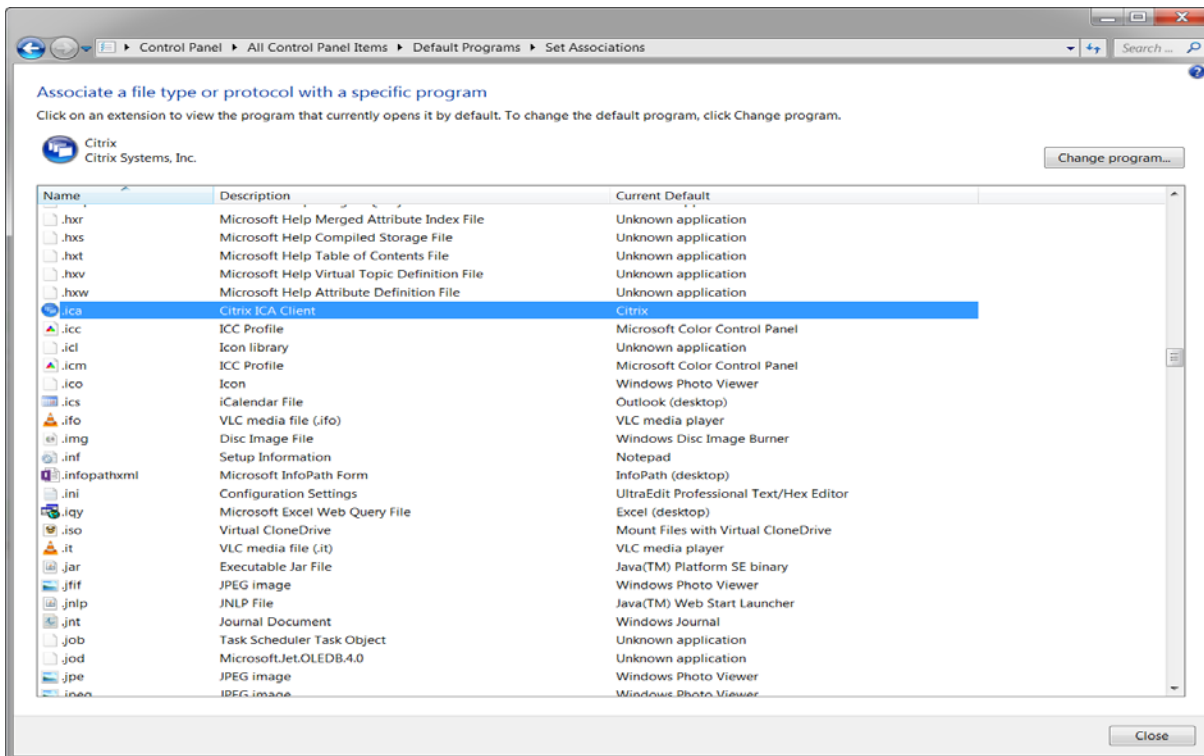
- 2) Select Associate a file type or protocol with a program



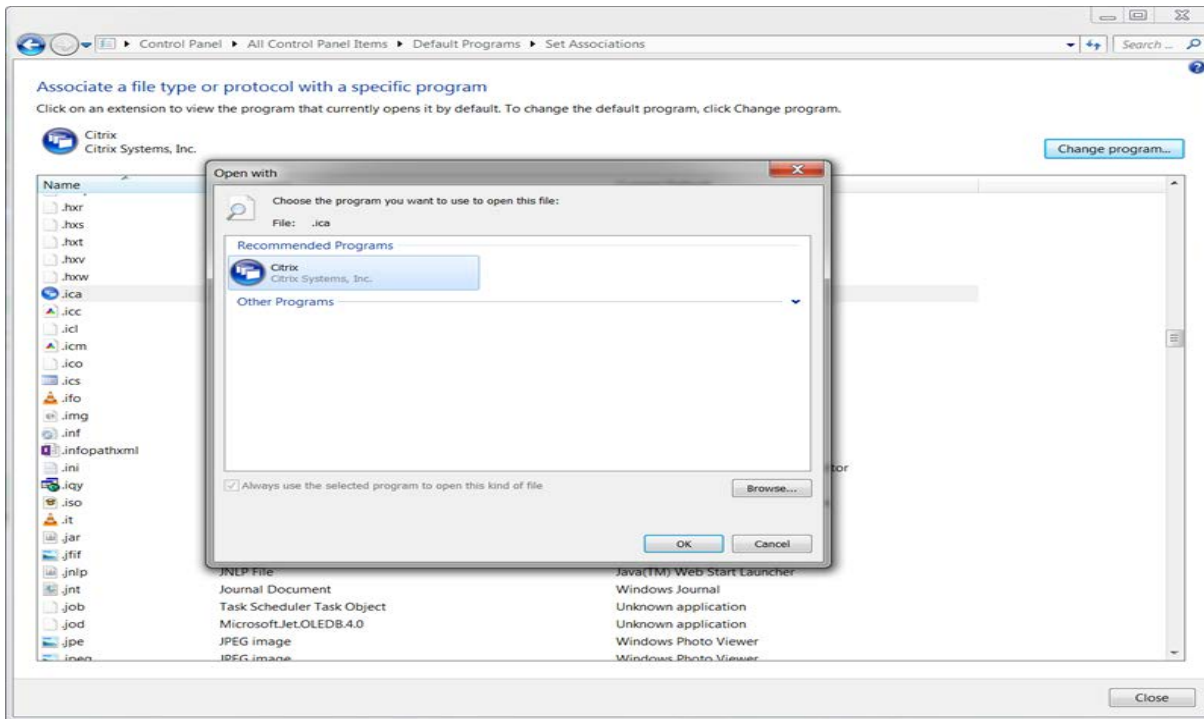
- 3) Click on Associate a file type.



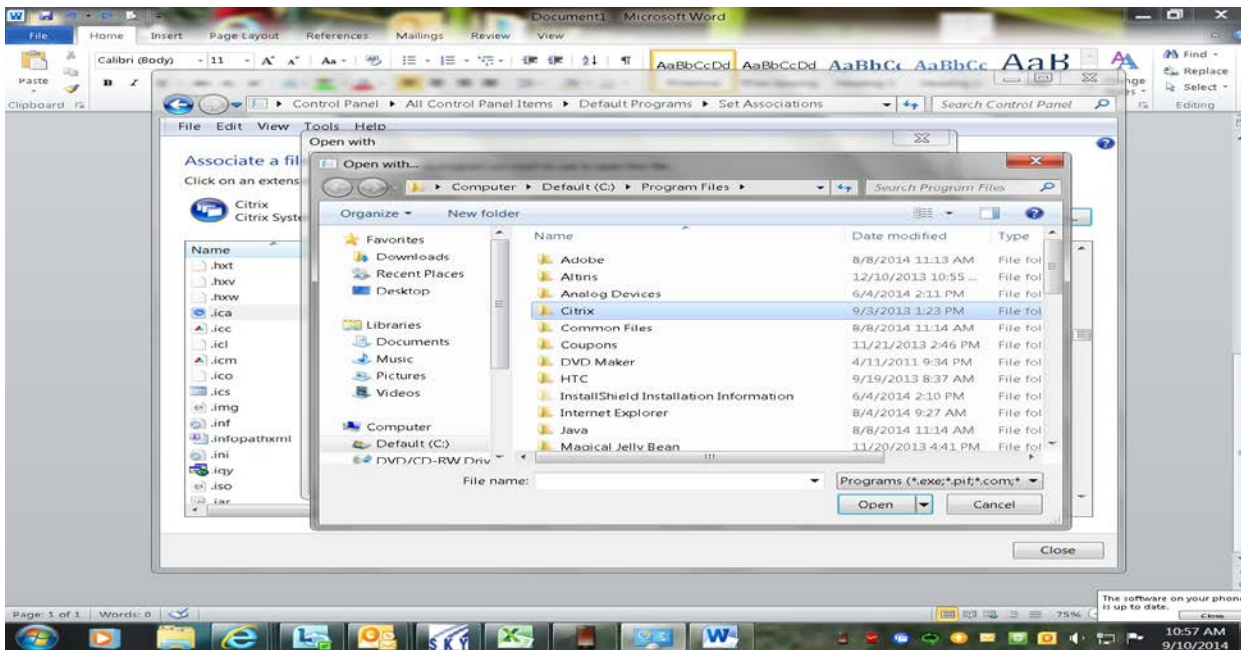
4) Scroll down to the Name (.ica) – Citrix ICA Client.



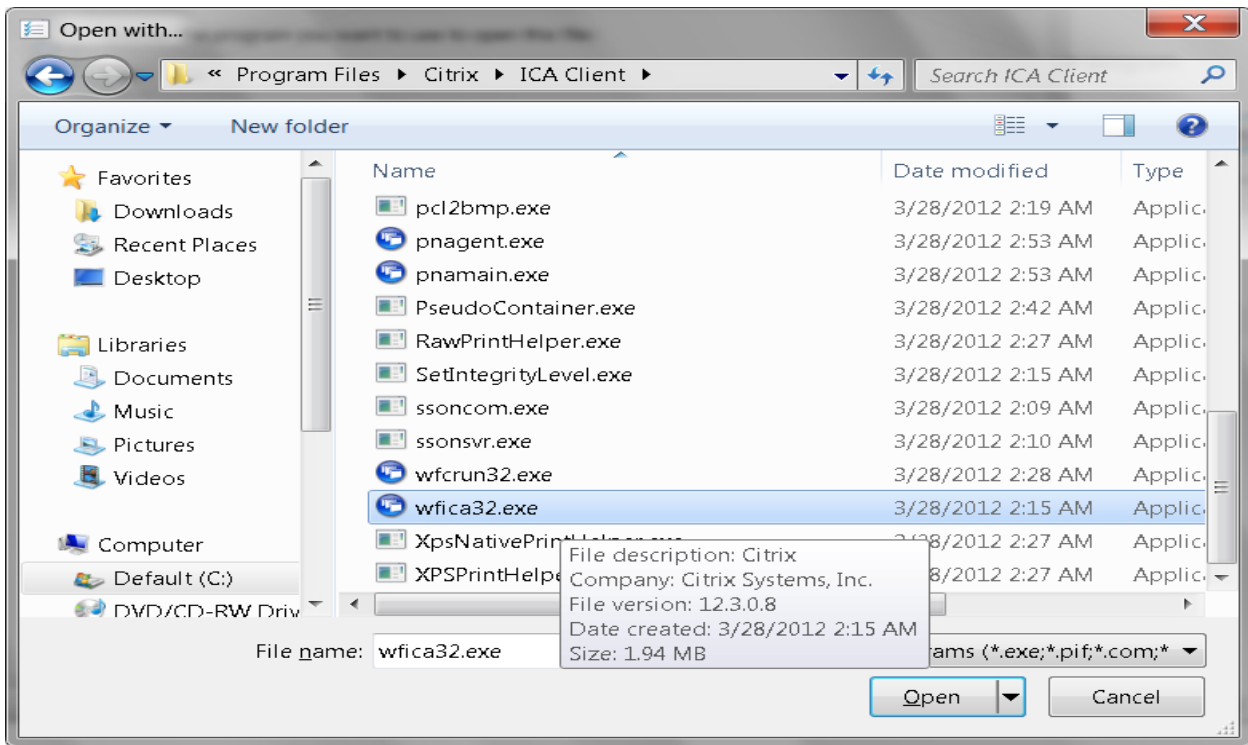
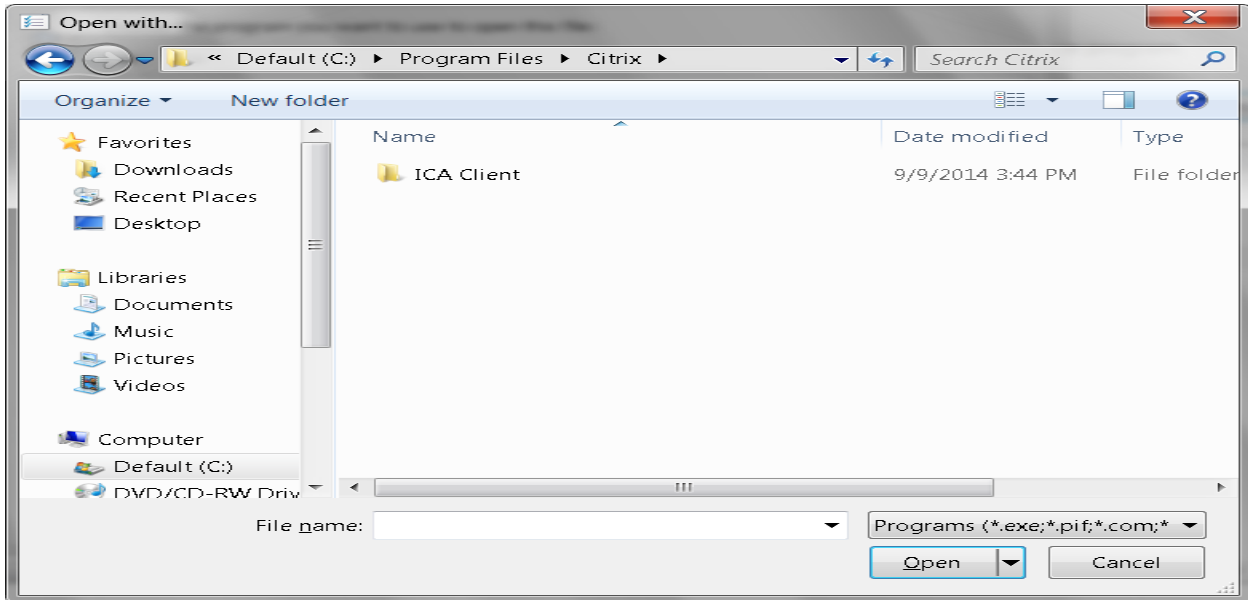
5) Click on the Browse from the “Open with” screen



6) Click on C:\Program Files\Citrix



7) Click on ICA Client then scroll down to **wfica32.exe** then click Open.



8) Click on OK the file association is corrected. Now click on the PaC and log back in.

