

INFECTIOUS DISEASE ESCAPE GAME

UNIT 11 HUMAN ANATOMY & PHYSIOLOGY | ACTIVITY

MISSION OBJECTIVE

The spread of the novel coronavirus has trapped you and the rest of your class in their homes. In order to escape, you must use your knowledge of infectious diseases, including COVID-19, to complete your mission and free yourself! - *of the last biology assignment of the year!*

The mission is, if you choose to complete it, to answer the questions at each level and be sure to record each one. Use the “Code Key” for each level to translate your answers into the codes to unlock each level.

Once all levels are complete, retrieve the completion code to break out and be free! You must hurry and escape before you remain trapped at home forever! *This is obviously an exaggeration.*

There are 5 levels of varying difficulty and number of questions. For every level you complete you earn points towards your overall score (50 points) and that much closer to FREEDOM! At least from biology. You all are so very close...

LEVEL 1 | PATHOGENS

MISSION INSTRUCTIONS

Read and/or Watch the resources provided in order to answer the questions. Remember to **WRITE DOWN** your answers in order (1.A, 2.B, 3...).

Then use the LEVEL I Code Key to translate your letter answer into it's number (like A might be #4, B might be #1, etc....).

Write down your level code and follow the link to the digital lock box and open your next set of clues.

Digital Lockbox: <https://forms.gle/yLKK9ZrMfPHTgJR97>

LEVEL 1 | PATHOGENS

RESOURCES

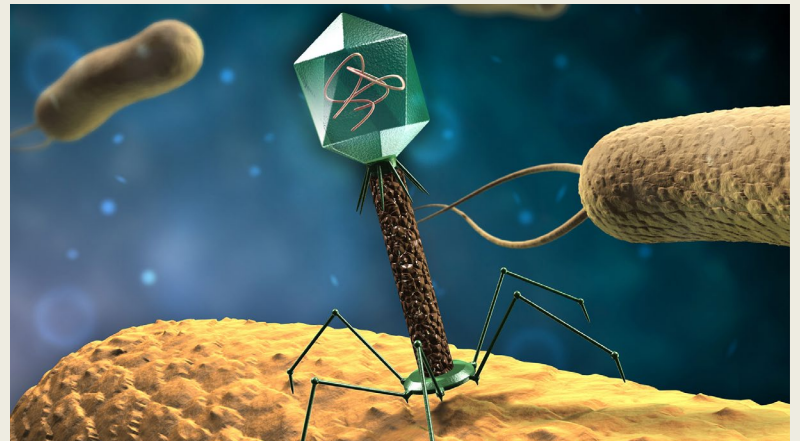
- [Amoeba Sisters | Bacteria Animation](#)
- [Amoeba Sisters | Viruses Animation](#)
- [Nucleus Medical Media | COVID19 Animation](#)

LEVEL 1 | PATHOGENS

QUESTION 1

What is a pathogen?

- A. Anything that is inside of the body
- B. Another term for a fever
- C. Anything that causes a disease
- D. Any type of bacteria

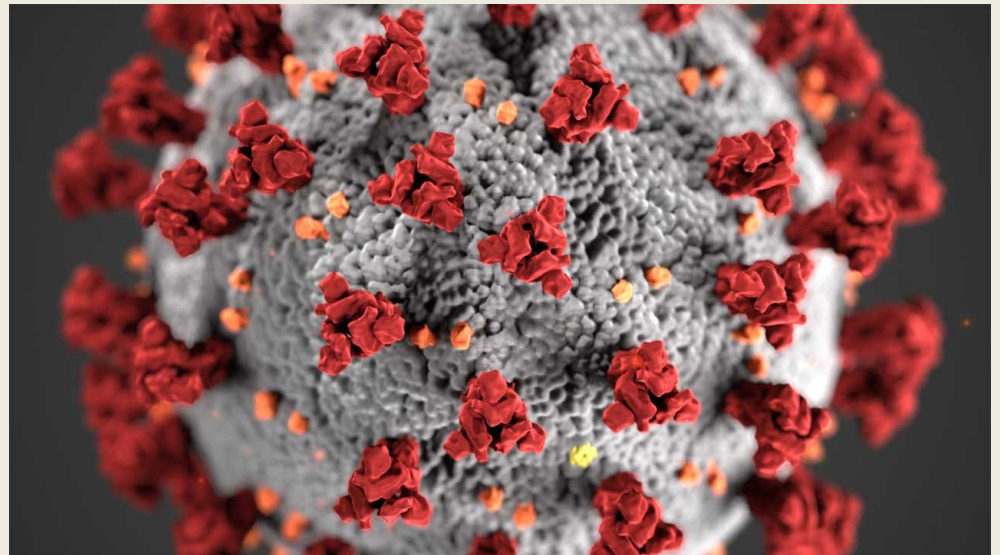


LEVEL 1 | PATHOGENS

QUESTION 2

SARS-CoV-2 is an example of what type of pathogen?

- A. Virus
- B. Bacteria
- C. Protist
- D. Fungus

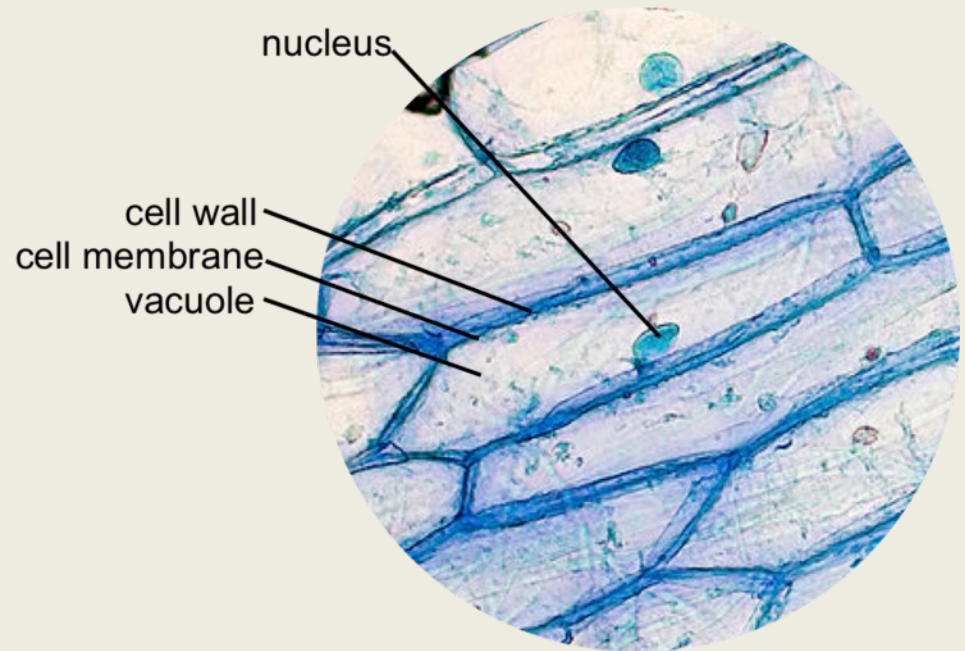


LEVEL 1 | PATHOGENS

QUESTION 3

Which of the following pathogens are NOT made of cells?

- A. Bacteria
- B. Fungus
- C. Protist
- D. Virus

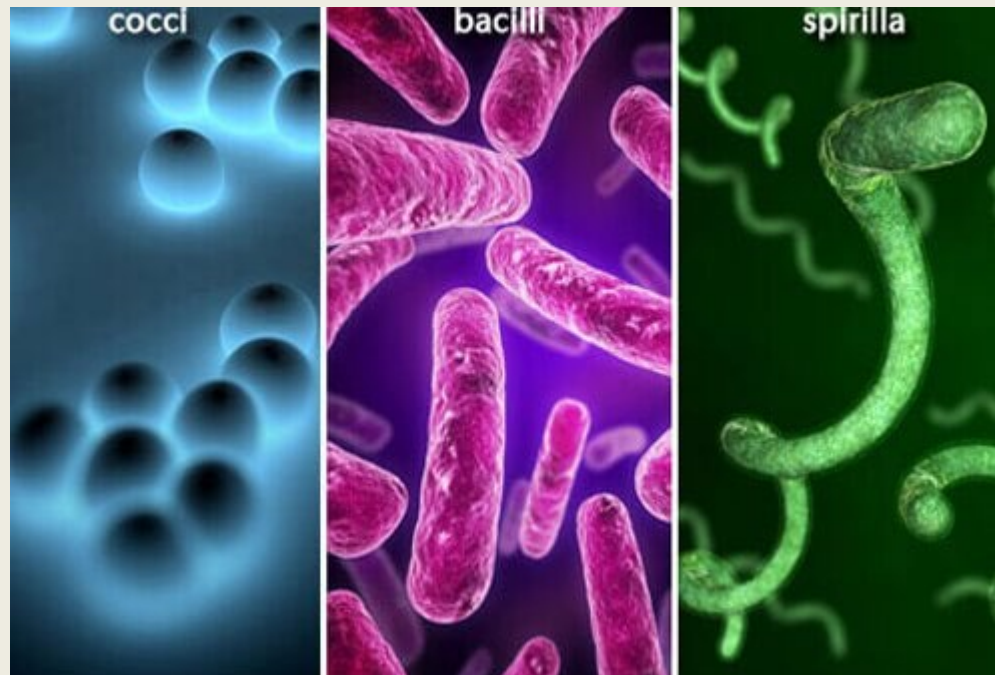


LEVEL 1 | PATHOGENS

QUESTION 4

Do bacteria require a host in order to reproduce?

- A. Yes
- B. No



LEVEL 1 | CODE KEY

