

Unit 11 Human Anatomy Guided Lecture Notes | Introduction

Key Words & Questions

I. Introduction

How are Organisms Organized?

Level	Description	Example
Cell		
Tissue		
Organ		
Organ System		
Organism		

Homeostasis

What is homeostasis?

Quick Questions

1. Why is it important to maintain a stable internal body temperature?
2. What does homeostasis mean?
3. What are the levels of organization and which do we belong?

Unit 11 Human Anatomy Guided Lecture Notes | Nervous System

Key Words & Questions

II. Nervous System & The Brain

Overview

PNS

Peripheral Nervous System (PNS)

CNS

Central Nervous System (CNS)

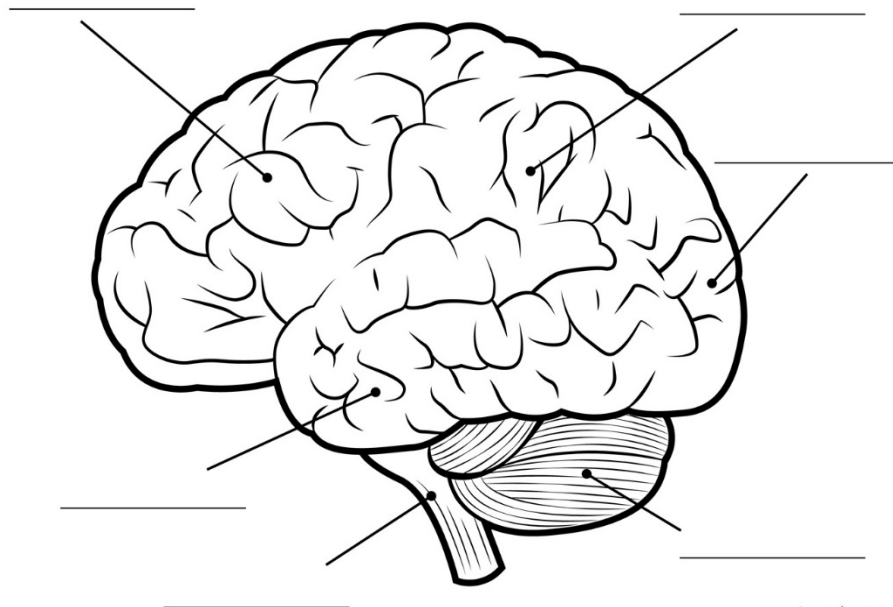
Quick Questions

4-5. What are the four parts of the cerebral cortex? What do they contribute to in 5 words or less?

Parts of the Brain

Label the parts of the brain and give a brief description of what it does:

Frontal Lobe / Parietal Lobe / Occipital Lobe / Temporal Lobe / Cerebellum / Brainstem



Unit 11 Human Anatomy Guided Lecture Notes | Cardiovascular System

Key Words & Questions

III. Cardiovascular System

Overview

Quick Question

6. What does the red side carry? The blue side?

Blood Flow

What effects blood flow?

Quick Question

7. What 4 things would affect blood flow? *Check your vocab list for help.*

Unit 11 Human Anatomy Guided Lecture Notes | Reproductive System

Key Words & Questions

IV. Reproductive System

Overview

Male Reproductive
System

Male Reproductive System

Female Reproductive System

Quick Question

8. Where are the majority of male reproductive organs? Inside or outside of the body? What about female sex organs?

Female Menstrual Cycle

9. When does menstruation NOT occur?

10. What is shed during menstruation?

Unit 11 Human Anatomy Guided Lecture Notes | Reproductive System

Key Words & Questions

Human Development

Fertilization

Quick Questions

11. Where are eggs produced?
12. What do eggs travel through during ovulation?
13. Where does the blastocyst implant itself?

Embryonic Development

Fetal Development

Quick Question

14. List the stages of human development and about how long they stay in that stage.

Unit 11 Human Anatomy Guided Lecture Notes | Immune System

Key Words & Questions

V. Immunity

Overview

Nonspecific Immune Response

Skin

Inflammation/Fever

phagocytes

Specific Immune Response

Antigen

B-cells

T-cells

Quick Question

15. What is the difference between nonspecific and specific immune responses?

16. Why would the body use a b-cell vs a t-cell during specific immune response?

Vaccinations & Antibiotics

Other Health Threats

Allergy

Autoimmune