



# Audition Central: Roald Dahl's Matilda The Musical JR.

Score: Agatha Trunchbull

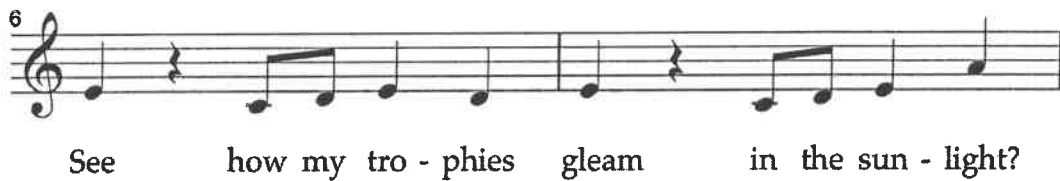
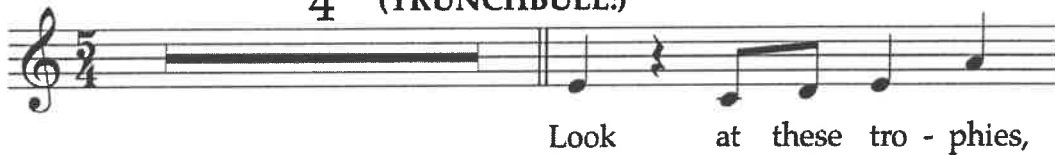
## THE HAMMER

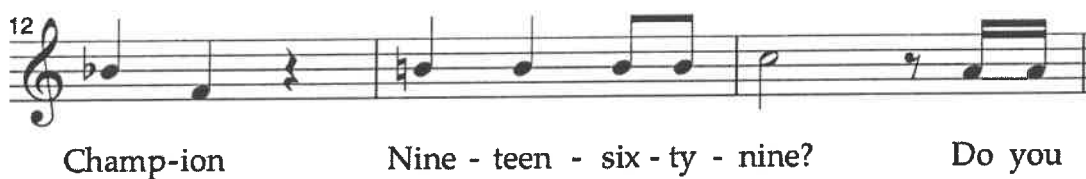
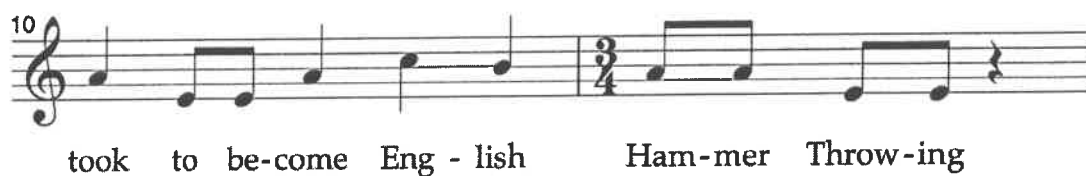
(TRUNCHBULL:) To the rules? In my school?

Quirky, not too fast

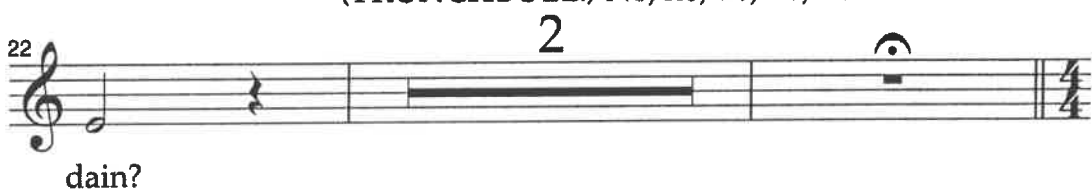
4

(TRUNCHBULL:)

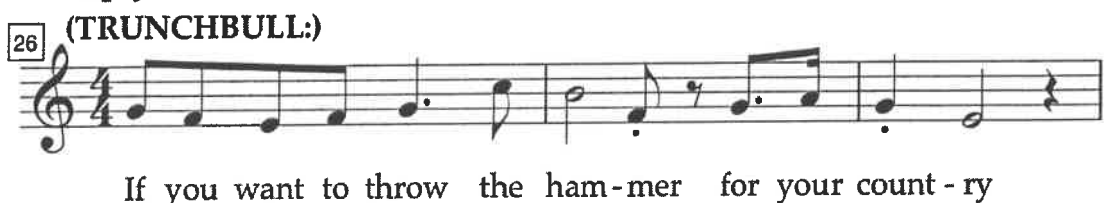




(TRUNCBULL:) No, no, no, no, no!



Simply





You have to stay in-side the cir - cle all the



time. If you want to make the team you don't need



hap-pi-ness or self-es - teem, You just need to keep your

(TRUNCBULL:) Sing, Children!

(TRUNCBULL:)



feet in-side the line.

2! 3! 4!

end

**TRUNCBULL,  
LITTLE KIDS:**



If you want to throw the ham - mer for your count-ry

**BIG KIDS:**



If you want to throw the ham - mer, Bam - bi-na-tum