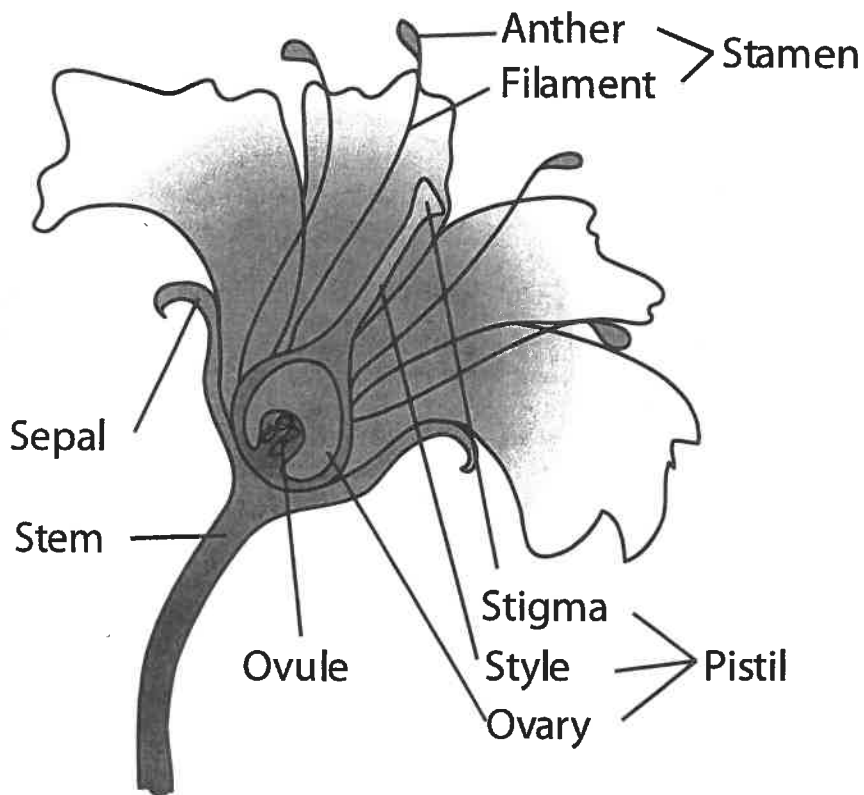


Anatomy of a Flower

Flowers may look very different, but most of them are made up of the same parts!



Anther: Contains the pollen.

Filament: The stalk supporting the anther.

Ovule: This will become the seed.

Stigma: The receptacle for the pollen.

Style: The stalk between the stigma and the ovary.

Ovary: This surrounds the seed as it matures. In some plants, this becomes a fruit.

Sepal: These are modified leaves that surround the flower when it is still a bud.

Stem: The stalk that supports the whole flower.

Petal: These are modified leaves that surround the reproductive parts. Often they are brightly colored to attract pollinating insects and animals.

The male part of the flower is called the stamen. and contains the filaments and anthers.

The female part of the flower is called the pistil and contains the stigma, style, ovary, and ovules.