



WELCOME TO OUR OPEN HOUSE

ELA with Mrs. Griswold



Communication

Email

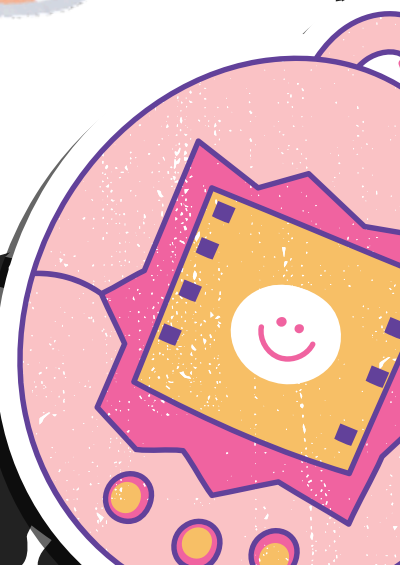
griswoldj@leonschools.net

Remind

Text @griswold-(class period)
to 81010

Focus (for school emails)

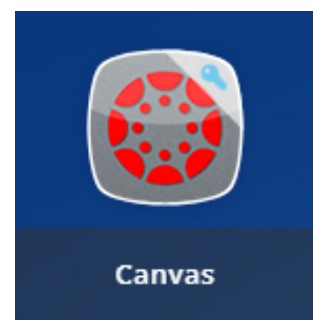
Make sure your email is
correct



ONLINE RESOURCES

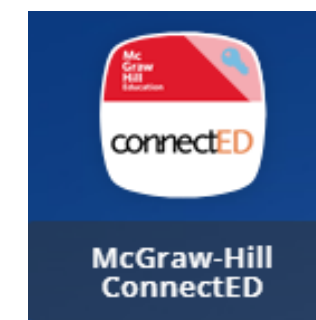
Canvas (found in ClassLink)

- Updated weekly
- Where to go when a student is absent
- Log in as your student to stay up to date



Online Text Book

- Found in ClassLink
- Located in the app Connect Ed
- Has weekly assignments



teacher website

- Found on DMS website under Teacher Websites
- <https://www.leonschools.net/Domain/9893>



GRADING

Grading

- Grades should be checked in Focus
- Grades are updated weekly
- Late assignments are penalized (see syllabus for late assignments policy)

Grade Categories

- 70% - quizzes, tests, and projects
- 30% - classwork and homework

Gradebook Codes

- NG - the assignment has not been graded
- Z - the assignment has been graded and yours is missing
- 0 - you earned zero points on the assignment
- EC - extra credit

CLASSROOM wish List

Amazon List



https://www.amazon.com/hz/wishlist/ls/W7P8BRQUPWQ4?ref=wl_share

Always Needed

- Individually wrapped candy
- Clorox Wipes
- Tissues
- Hand Sanitizer
- Pencils

QUESTIONS

