

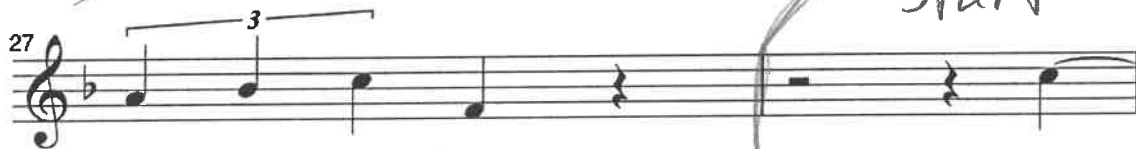
# Matilda Excerpt



does - n't mean that you just have to grin and bear \_\_\_ it.



If you al - ways take it on the chin and wear it,



Noth - ing will change.

Ev -



- ven if you're lit - tle, you can do a lot, \_\_\_ You must-



- n't let a lit - tle thing like lit - tle stop \_\_\_ you.



If you sit a - round and let them get on top, \_\_\_ You



might as well be say - ing you think that it's O - K and

37

that's not right. And if it's not right,

41

You have to put it right. But

44

no - bo - dy else — is gon-na put it right for me,

46

No - bo - dy but me is gon-na change my sto - ry,

48

Some-times you have to be a lit-tle bit naugh-ty!

*end*