

# Ensemble Excerpt

**AMANDA, LAVENDER,  
ALICE, HORTENSIA:**



Mum says I'm an an - gel sent down from the sky.

**BRUCE, ERIC,  
TOMMY, NIGEL:**



My dad-dy says I'm his spe-cial lit - tle sol - dier,

**BRUCE:**



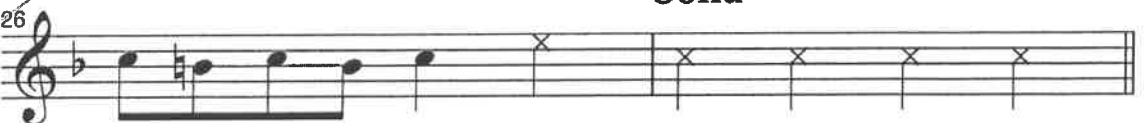
No - one is as hand - some, strong as me. It's

**BRUCE, ERIC,  
TOMMY, NIGEL:**



true he in - dul - ges my ten - den - cy to bulge But

**Solid**



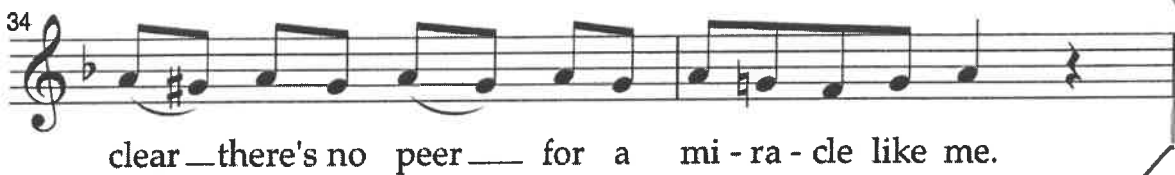
I'm his lit - tle sol - dier, hup two four free!

**ALL KIDS:**  
(all quite short)



My mum-my says I'm a mi - ra - cle, One look at my

Start



end

**LAVENDER:**

