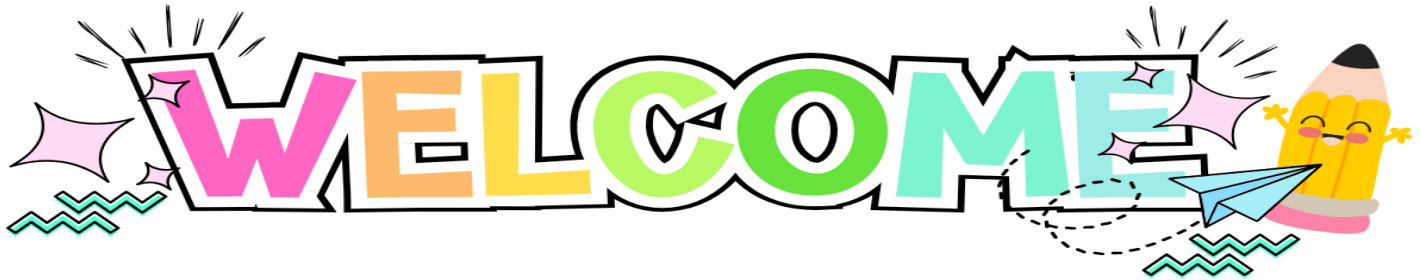




THE LEPRECHAUN

A Nationally Recognized School of Excellence

AUGUST 2025



Principals Corner

Welcome back KLES families! The excitement of a new school year is something we look forward to at the end of every summer. To be honest, campus is just too quiet without all of you. The best part of our jobs is walking through the classrooms to see students and teachers working and learning. Throughout the year, be sure to check out our Instagram and FaceBook posts to see pictures of our hard-working students and staff.

We want to invite you to come to our School Advisory Council (SAC) meeting on Tuesday, Aug. 19th at 5:30. Topics will include our school grade and the School Improvement Plan (SIP). We'd love for you to stay for our 6:00 PTO meeting, too! We look forward to seeing you on campus!

Jenny Blair & Champayne Ricciardi

DATES TO REMEMBER

Aug 11	First Day of School
Aug 11	Pre-K & K—Boo Hoo Breakfast
Aug 19	5:30—SAC Meeting
Aug 19	6:30—PTO Meeting
Aug 28	Open House
Sept 1	LABOR DAY—NO SCHOOL

PM1 TESTING DATES

Aug 19	2nd ELA
Aug 20	1st ELA
Aug 21	2nd Math
Aug 26	3rd & 4th ELA
Aug 27	1st Math
Aug 28	5th ELA
Sept 2	3rd & 4th Math
Sept 3	K ELA
Sept 4	5th Math
Sept 10	K Math

Visit us on the web: www.leonschools.net/killearnlakes



Media Center

Hello from the Media Center! Welcome back!

I am so excited to share my love of books and reading with all KLES students.

We will begin the year by touring the library so students are comfortable finding the books they want to read. We will review library rules and procedures, and continue with the monitored self-checkout that was implemented last year. The students love to scan their own books and take ownership of the process.

Next month, we will have our Scholastic Book Fair. Please mark your calendars! The dates are September 22-30. More information to come if you are interested in volunteering.

I absolutely LOVE teaching your children and I love their excitement for reading! If you ever need to reach me, my email is stemlek@leonschools.net.

I am looking forward to an exciting year!

Sincerely,
Katie Stemle



Physical Education

We are so excited to see everyone back in Physical Education this year! We are looking forward to learning and moving with each and every one of you.

Here are a couple of things that will be important to remember:

Make sure you have on your good running shoes and clothes on PE days so you can be safe and successful! No Crocs, flops or sandals.

We have water fountains that you will get to use, but if you choose to bring a water bottle remember to put your name on it, be sure it can close and water is ALWAYS the best choice!

We live in Florida and it is HOT, so if you want to wear sunscreen and/or bug spray on PE days be sure to put it on BEFORE you come to school.

If you are sick or injured and need to be excused from a particular activity or PE all together, please be sure to bring a note to your PE teachers so we can make arrangements.



It's going to be a great year! The best way to reach your PE teacher is via email, as we are in and out constantly during the school day.

Thank you!

Kelly Dennis:
kelly.dennis@leonschools.net
Angie Hickman:
angie.hickman@leonschools.net

Musical Notes

Welcome back Killearn Lakes Families.

I hope everyone had a wonderful summer full of beautiful music. I can't wait to see the students again!

Don't forget to come down to the music room during Orientation and Open House.



Thanks for sharing your
Musical kiddos with me!

Holly Pursino

Music Teacher

Killearn Lakes Elementary

Art Updates

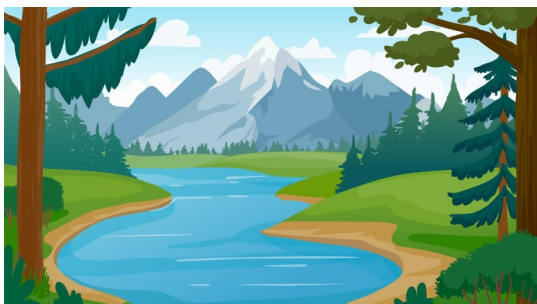
Welcome back to school everybody!

August begins with some warmups!

Kindergarten and **First Grade** are learning about Pointillism with George Seurat. **Second** and **Third Grade** are understanding the mechanics of a landscape, while the **Fourth** and **Fifth Grade** students are learning about X-rays and how they work. They are experimenting with the idea of replacing body part (eyes brain ears) with technology in abstract art.

Look for some masterpieces to come home soon!

-Mr. Tavares J



Pre- K Notes

We are excited to welcome our PreK students to KLES!

Our first Unit of Study is "Beginning the Year." Our focus will be on adjusting to the school routine, meeting new friends and learning the rules of PreK.



We look forward to a great year in PreK.

Guidance

I'm excited to welcome your students in Guidance Special Area this year.

K-2 will come to Guidance first and third quarter.

3-5 will come to Guidance second and fourth quarter.

The KLES Guidance program is designed to encourage student growth in academic, social and personal development. We will focus on character development, Anti-Bullying, conflict resolution, as well as our core KLES expectations where we Keep Learning Every Second by being Respectful, Responsible, and Ready to Learn!

I look forward to my time with each student In Our Guidance Learning Era!

All my best,
Mrs. Harris



School Reminders

School Supervision Hours

7:45 am—3:20 pm

Bells ~ 8:30 am & 2:50 pm

Dismissal Changes

ALL dismissal changes must be entered in PikMyKid by 2:00 pm.

Emergency changes will only be accepted through the office by phone or in person until 2:30 pm.

New Visitor Check-in System

Please bring your ID to be scanned into the system.

Lost & Found

PLEASE label all clothing (jackets; hats; etc.) that come to school so we can return it to your child.

Drop off/Pick-up

Please do NOT park next door at the church each day for drop-off and pick-up. The side road is full with busy cars using the designated drop-off area in the rear of the school. It is NOT SAFE for children to cross this busy roadway!

KLES offers 5 drop-off options:

1. Ride the bus
2. Curbside car drop off in rear of school
3. Before school EDEP
4. Park in parking lot on campus and walk child to entry gate by the office
5. Walk to school using the neighborhood sidewalks and crossing guard in front of the school.

Deer Lake UMC and LCS have an agreement to allow parent parking in the church lot for overflow parking (when there is a school event); not for daily use.

Please help us keep the children safe by following school drop-off and pick-up procedures.

SAFETY FIRST



EMERGENCY CONTACTS

Please be sure to have (at minimum) BOTH parents or one parent AND an alternate person to contact that can pick up the student in case of emergency!

How to add others for emergency contacts:

Log into FOCUS app

Click "**More Info**" (light blue box)

Click "**Student Info**" (light blue box)

Open the toggle arrow on the left side of the screen

Select "Addresses & Contacts"

Verify who is already on the list

Click "**New Contact**" (blue box)

Complete ALL information –

-First, Last Names

-If a parent – select "Mother/Father" from drop down (include address if prompted)

-Select contact level: Custody/ Emergency/Pick up/Restraining Order

-Select the contacts priority level

SAVE (green button at bottom)

Lunch Bunch Reminders:

* **ALL visitors MUST check in at the Front Office**

* **Once checked in at front desk you may head to the cafeteria. Please do not meet your child before they enter the cafeteria, or escort your child back to the classroom.**

* **Due to food allergies, there is no sharing of, or bringing in food for other children**

* **Your student may have ONE friend join them at the table on stage.**

* **Please avoid bringing 'sweet treats' or sodas for the kids.**

* **Cell phones should be used for emergencies only– no photographs of other children allowed.**

Nurse notes for "Return to School"

Fever free **24 hours after fever breaks** without use of fever reducing medication (Tylenol/Ibuprofen)

Vomiting/Diarrhea 24 hours symptom free from last incident



for PREVENTION

Lice ~ Do NOT share hair brushes, hats, jackets; If you notice your child scratching their heads—GET CHECKED, it is much easier to treat the earlier you catch it.

Proper hand washing
Cover your cough (and sneeze)
Dress for the weather

Attendance

Attendance at school is very important. When students arrive late or are picked up before dismissal, teaching and learning are disrupted. It's quite eye opening, when you do the math, that missing just ten minutes a day adds up to nearly 1 ½ weeks of missed instruction in one school year (nearly half a year over the 13 years of schooling).

Please make every effort to have your child in school from 8:30-2:50 each day.

Every Minute Counts!

Just a little bit doesn't seem like much but...

When your child misses just...	That equals...	Which is...	And over 13 years of schooling that's...
10 minutes per day	50 minutes per week	Nearly 1.5 weeks per year	Nearly half a year
20 minutes per day	1 hour & 40 minutes per week	Over 2.5 weeks per year	Nearly 1 year
Half an hour per day	Half a day per week	4 weeks per year	Nearly 1 and a half years
1 hour per day	1 day per week	8 weeks per year	Over 2 and a half years

Please be on time every day and avoid picking your child up early.

COUNSELOR'S

Welcome to the 2025-26 school year at KLES! We are so excited to see our returning families, and equally as excited to meet our new families! We know coming off summer break and transitioning back into a routine at school can be challenging, so we will do our very best to be available and helpful! Our Guidance Team has many roles and wears many different hats, so if you have a specific need, please check the KLES website to see who you should be directed to when you call or email. Our goal is to provide you with the information and/or tools that will assist you in navigating the many twists and turns the year will bring. We will be sharing tips, information and resources throughout the year that hopefully will remind us all of how resilient and capable we are! Reach out with your questions or concerns. We've got this!

~ Mrs. Barrineau, Mrs. DeValle, Mrs. Harris and Ms. Parsons



Food for thought: "A new school year means new beginnings, new adventures, new friendships, and new challenges. The slate is clean and anything can happen." — Denise Witmer

KLES PTO

August brings with it the nervous excitement of a new school year, and we again feel lucky to embark on this journey of learning and building community with our top-notch teachers, staff, and administrators and with you, our fellow parents—all in the aim of enriching our students' academic and social lives.

You can find out more about our upcoming programs at the first PTO meeting, which is scheduled for **6:00 p.m. on Tuesday, August 19th in the Media Center**; free childcare will be provided. We are already only two weeks away from our Patron Program Fundraiser, which begins Friday, August 22nd and ends Friday, September 5th. This fundraiser is vitally important to the quality of programming and events available at KLES, and 100% of its proceeds directly benefit the school; more information will be sent out soon. Check our KLES PTO social media accounts for details on this program and others: Killlearn Lakes Elementary School PTO on Facebook and @klespto on Instagram.

Your involvement will help us to further support teachers' efforts and students' experiences at our beloved KLES. Please be on the lookout for volunteer opportunities and fun programming for the whole family.

On behalf of the KLES PTO, we look forward to meeting and working together with you all. We truly consider ourselves lucky to be at KLES!

Emily Catena

PTO Communications Director

killlearnlakespto@gmail.com

www.killlearnlakespto.org

<https://www.facebook.com/KilllearnLakesElementarySchoolPTO>

@klespto

KLES Mission Statement

Killlearn Lakes Elementary School provides students with an equitable learning environment to create and develop lifelong learners.

Looking to get ahold of us?

- | | |
|-------------------------|-----------------------|
| 1 - Front Office | 2 - Bookkeeper |
| 3 - Registrar | 4 - Clinic |
| 5 - Guidance | 6 - Cafeteria |
| 7 - EDEP | |

Jenny Blair,
Principal

Champayne Ricciardi,
Assistant Principal

8037 Deerlake Drive East, Tallahassee, FL
32312-5076

Ph. 850-921-1265

Fax 850-922-2566

LCS

"No person shall on the basis of sex (including transgender, gender nonconforming and gender identity), marital status, sexual orientation, race, religion, ethnicity, national origin, age, color, pregnancy, disability, military status or genetic information be denied employment, receipt of services, access to or participation in school activities or programs if qualified to receive such services, or otherwise be discriminated against or placed in a hostile environment in any educational program or activity. including those receiving federal financial assistance, except as provided by law." No person shall deny equal access or a fair opportunity to meet to, or discriminate against, any group officially affiliated with the Boy Scouts of America, or any other youth group listed in Title 36 of the United States Code as a patriotic society.