

# UNIT 1

## SKILLS OVERVIEW

### UNIT THEME

# Journeys

WEEK 1				WEEK 2				WEEK 3			
Informational Text				Informational Text				Historical Fiction			
“The Path to Paper Son” and “Louie Share Kim, Paper Son”				from Life on Earth and Beyond				from Pedro’s Journal			
Florida’s B.E.S.T. Standards for English Language Arts				FL B.E.S.T. ELA		FL B.E.S.T. ELA		FL B.E.S.T. ELA		FL B.E.S.T. ELA	
READING WORKSHOP	Minilesson Bank	Time Line: Immigration and Expansion in the United States	ELA.5.C.1	Infographic: The Places Scientists Will Go!	ELA.K12.EE.4.1	Map: The Age of Exploration	ELA.K12.EE.4.1				
		Informational Texts: “The Path to Paper Son” and “Louie Share Kim, Paper Son”	ELA.K12.EE.2.1	Informational Text: Life on Earth—and Beyond	ELA.K12.EE.2.1	Historical Fiction: Pedro’s Journal	ELA.K12.EE.2.1				
		Domain-Specific Words	ELA.5.V.1.1	Words That Relate to Scientific Concepts	ELA.5.V.1.1	Multiple-Meaning Words	ELA.5.V.1.3				
		Analyze Main Ideas and Details	ELA.5.R.2.2	Analyze Text Features	ELA.5.R.2.1	Understand Point of View	ELA.5.R.1.3				
		Use Text Evidence	ELA.5.R.2; ELA.K12.EE.1.1	Make Inferences	ELA.K12.EE.3.1	Use Text Evidence	ELA.5.R.1; ELA.K12.EE.1.1				
		Talk About It: Opinion	ELA.K12.EE.4.1	Write to Sources: Response to Informational Text	ELA.5.C.1	Write to Sources: Opinion	ELA.5.C.1				
	READING-WRITING WORKSHOP BRIDGE	Academic Vocabulary	Related Words	ELA.5.V.1.1	Synonyms and Antonyms	ELA.5.V.1.1	Context Clues	ELA.5.V.1.1; ELA.5.V.1.3			
		Word Study	Suffixes <i>-ic</i> , <i>-ism</i> , <i>-ive</i>	ELA.5.F.1.3.a	Greek Roots	ELA.5.V.1.2	Vowel Teams	ELA.5.F.1.3.a			
		Read Like a Writer	Explain Text Structure	ELA.5.R.2.1	Analyze Text Features	ELA.5.R.2.1	Analyze Precise Language	ELA.5.V.1			
		Write for a Reader	Choose a Text Structure	ELA.5.C.1.4	Use Text Features	ELA.5.C.1	Create a Voice	ELA.5.C.1; ELA.K12.EE.6.1			
WRITING WORKSHOP	Weekly Focus	Introduce and Immerse		Develop Elements		Develop Structure					
	Minilesson Bank	Analyze a Personal Narrative	ELA.5.R.1.1	Develop an Engaging Idea	ELA.5.C.1.2	Develop an Introduction	ELA.5.C.1.2				
		Know the Narrator	ELA.5.R.1.1	Develop Specific Details	ELA.5.C.1.2	Develop a Sequence of Events	ELA.5.C.1.2				
		Analyze Setting and Sequence of Events	ELA.5.R.1.1	Develop Sensory Details	ELA.5.C.1.2	Draft with Transitions	ELA.5.C.1.2; ELA.5.C.1.5				
		Brainstorm a Topic	ELA.5.C.1.2; ELA.5.C.1.5	Develop Point of View	ELA.5.C.1.2	Revise to Include Important Events	ELA.5.C.1.2; ELA.5.C.1.5				
		Plan Your Personal Narrative	ELA.5.C.1.2; ELA.5.C.1.5	Compose with Dialogue	ELA.5.C.1.2	Develop a Conclusion	ELA.5.C.1.2				
	READING-WRITING WORKSHOP BRIDGE	Spelling	Spell Words with Suffixes <i>-ic</i> , <i>-ism</i> , <i>-ive</i>	ELA.5.C.3.1	Spell Words with Greek Roots	ELA.5.C.3.1	Spell Words with Vowel Teams	ELA.5.C.3.1			
		Language and Conventions	Simple Sentences	ELA.5.C.3.1	Independent and Dependent Clauses	ELA.5.C.3.1	Compound and Complex Sentences	ELA.5.C.3.1			

# Essential Question

How do journeys change us?

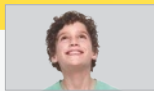


For expanded explicit instruction and corrective feedback, consult the **Reading Routines Companion**.

## WEEK 4

### Poetry

#### Poetry Collection



#### FL B.E.S.T. ELA

Infographic: A Poetry Machine	ELA.K12.EE.4.1
Poetry: Poetry Collection	ELA.K12.EE.2.1
Literal Language	ELA.5.R.1.4
Explain Sound Devices and Figurative Language	ELA.5.R.1.4
Visualize	ELA.5.R.1
Write to Sources: Response to Literature	ELA.5.C.1

## WEEK 5

### Informational Text

#### Picturesque Journeys



#### FL B.E.S.T. ELA

Slideshow: A Painted Journey	ELA.5.C.1
Informational Text: Picturesque Journeys	ELA.K12.EE.2.1
Domain-Specific Words	ELA.5.V.1
Analyze Text Structure	ELA.5.R.2.1
Confirm or Correct Predictions	ELA.5.R.2
Talk About It: Opinion	ELA.K12.EE.4.1

## WEEK 6

### Inquiry and Research

#### Hit the Road!



#### FL B.E.S.T. ELA

Leveled Research Articles	ELA.K12.EE.2.1
Use Academic Words	ELA.5.V.1.1
Explore and Plan: Argumentative Texts	ELA.5.C.1.5
Conduct Research: Navigation Toolbar	ELA.5.C.5.2
Argumentative Writing: Travel Guide	ELA.5.C.1.3
Refine Research: Plagiarism, Paraphrasing, and Quoting	ELA.5.C.4.1
Extend Research: Write a Business Letter	ELA.5.C.1.3
Revise for Clarity	ELA.5.C.1.5
Edit and Peer Review	ELA.5.C.1.5
Celebrate and Reflect	ELA.5.C.2.1

#### Writer's Craft

#### Publish, Celebrate, and Assess

Use Adjectives	ELA.5.C.1.5; ELA.5.C.3.1	Revise by Rearranging and Combining Ideas	ELA.5.C.1.2
Edit for Adverbs	ELA.5.C.1.5; ELA.5.C.3.1	Edit for Subject-Verb Agreement	ELA.5.C.1.5; ELA.5.C.3.1
Edit for Indefinite Pronouns	ELA.5.C.1.5; ELA.5.C.3.1	Publish and Celebrate	ELA.5.C.1.2
Revise by Adding Ideas for Clarity	ELA.5.C.1.2; ELA.5.C.1.5	Prepare for Assessment	ELA.5.C.1.2
Revise by Deleting Ideas for Clarity	ELA.5.C.1.2; ELA.5.C.1.5	Assessment	ELA.K12.EE.5.1
Spell Words with <i>-able</i> , <i>-ible</i>	ELA.5.C.3.1	Spell Words with VCe Syllables	ELA.5.C.3.1
Common, Proper, and Collective Nouns	ELA.5.C.3.1	Regular and Irregular Plural Nouns	ELA.5.C.3.1

UNIT THEME

Observations

		WEEK 1		WEEK 2		WEEK 3		
		Informational Text <i>from Far from Shore</i>		Informational Text <i>A Place for Frogs</i>		Realistic Fiction <i>from Hatchet</i>		
								
Florida's B.E.S.T. Standards for English Language Arts		FL B.E.S.T. ELA		FL B.E.S.T. ELA		FL B.E.S.T. ELA		
READING WORKSHOP	Minilesson Bank	Infographic: How Scientists Study Ocean Life	ELA.K12.EE.4.1	Map: Protecting Habitats	ELA.5.C.1	Poem: Perfect Inspiration	ELA.K12.EE.4.1	
		Informational Text: <i>from Far from Shore</i>	ELA.K12.EE.2.1	Informational Text: <i>A Place for Frogs</i>	ELA.K12.EE.2.1	Realistic Fiction: <i>from Hatchet</i>	ELA.K12.EE.2.1	
		Domain-Specific Vocabulary	ELA.5.V.1.1; ELA.5.V.1.3	Words That Relate to Key Ideas in the Text	ELA.5.V.1	Words That Relate to Feelings or Actions	ELA.5.V.1	
		Explain Author's Purpose	ELA.5.R.2.3	Analyze Text Structure	ELA.5.R.2.1	Analyze Point of View	ELA.5.R.1.3	
		Evaluate Details	ELA.5.R.2.2	Monitor Comprehension	ELA.5.R.2	Generate Questions	ELA.5.R.1	
		Talk About It	ELA.K12.EE.4.1	Write to Sources	ELA.5.C.1	Write to Sources	ELA.5.C.1	
	READING-WRITING WORKSHOP BRIDGE	Academic Vocabulary	Related Words	ELA.5.V.1.1	Synonyms and Antonyms	ELA.5.V.1.1	Context Clues	ELA.5.V.1.1; ELA.5.V.1.3
		Word Study	Open and Closed Syllables	ELA.5.F.1.3.a	Final Stable Syllables <i>-le, -tion, -sion</i>	ELA.5.F.1.3.a	<i>r</i> -Controlled Vowels	ELA.5.F.1.3.a
		Read Like a Writer	Analyze Graphic Features	ELA.5.R.2.1	Analyze Author's Purpose	ELA.5.R.2.3	Analyze Voice	ELA.5.R.1
		Write for a Reader	Use Graphic Features	ELA.5.C.5.1	Develop Author's Purpose	ELA.5.C.1	Use Voice	ELA.5.C.1; ELA.K12.EE.6.1
WRITING WORKSHOP	Weekly Focus	Introduce and Immerse		Develop Elements		Develop Structure		
	Minilesson Bank	Analyze an Informational Article	ELA.5.R.2.2	Develop an Engaging Idea	ELA.5.C.1.4; ELA.5.C.1.5	Develop and Compose an Introduction	ELA.5.C.1.4	
		Analyze a Lead Paragraph	ELA.5.R.2.1	Draft with Specific Facts and Concrete Details	ELA.5.C.1.4	Develop with Related Information	ELA.5.C.1.4	
		Identify Details in Photographs	ELA.5.R.2.1	Develop with Definitions and Quotations	ELA.5.C.1.4	Develop with Transitions	ELA.5.C.1.4	
		Set a Purpose	ELA.5.C.1.4	Develop with Other Information	ELA.5.C.1.4	Use Formatting	ELA.5.C.1.4	
		Plan Your Informational Article	ELA.5.C.1.4; ELA.5.C.1.5	Develop with Visuals and Multimedia	ELA.5.C.1.4	Develop and Compose a Conclusion	ELA.5.C.1.4	
	READING-WRITING WORKSHOP BRIDGE	Spelling	Spell Words with Open and Closed Syllables	ELA.5.C.3.1	Spell Words with Final Stable Syllables	ELA.5.C.3.1	Spell Words with <i>r</i> -Controlled Vowels	ELA.5.C.3.1
		Language and Conventions	Subject-Verb Agreement	ELA.5.C.3.1	Principal Parts of Regular Verbs	ELA.5.C.3.1	Principal Parts of Irregular Verbs	ELA.5.C.3.1



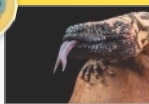
For expanded explicit instruction and corrective feedback, consult the **Reading Routines Companion**.

## Essential Question

How do we learn through our observations?

### WEEK 4

#### Informational Text “Tracking Monsters”



##### FL B.E.S.T. ELA

Primary Sources: In the Words of Theodore Roosevelt	ELA.K12.EE.4.1
Informational Text: “Tracking Monsters”	ELA.K12.EE.2.1
Domain-Specific Words	ELA.5.V.1.1
Explain Relationships Between Ideas	ELA.5.R.2
Confirm or Correct Predictions	ELA.5.R.2
Write to Sources	ELA.5.C.1.3
Analogy	ELA.5.V.1.1; ELA.5.V.1.3
Prefixes <i>il-</i> , <i>in-</i> , <i>im-</i> , <i>ir-</i>	ELA.5.F.1.3.a
Analyze Author’s Message	ELA.5.R.2.3
Develop Author’s Message	ELA.5.C.1

### WEEK 5

#### Argumentative Texts



#### Let Wild Animals Be Wild and Don’t Release Animals Back to the Wild

##### FL B.E.S.T. ELA

Video: Saving Natural Habitats	ELA.K12.EE.4.1
Argumentative Texts: Let Wild Animals Be Wild/ Don’t Release Animals	ELA.K12.EE.2.1
Precise Words	ELA.5.V.1.1
Analyze Argumentative Texts	ELA.5.R.2.4
Synthesize Information	ELA.5.R.2
Talk About It	ELA.K12.EE.4.1
Parts of Speech	ELA.5.V.1.1
Base Words and Endings	ELA.5.F.1.3.a
Understand First-Person Point of View	ELA.5.R.1
Use First-Person Point of View	ELA.5.C.1

##### Writer’s Craft

Use Precise Language	ELA.5.C.1.4
Use Correct Verb Tense	ELA.5.C.1.4; ELA.5.C.3.1
Edit for Adverbs	ELA.5.C.1.5; ELA.5.C.3.1
Edit Simple and Compound Sentences	ELA.5.C.1.5; ELA.5.C.3.1
Edit for Prepositional Phrases	ELA.5.C.1.5; ELA.5.C.3.1

Spell Words with Prefixes <i>il-</i> , <i>in-</i> , <i>im-</i> , <i>ir</i>	ELA.5.C.3.1
Perfect Verb Tenses	ELA.5.C.3.1

##### Publish, Celebrate, and Assess

Edit for Punctuation Marks	ELA.5.C.1.5; ELA.5.C.3.1
Edit for Capitalization	ELA.5.C.1.5
Publish and Celebrate	ELA.5.C.1.4
Prepare for Assessment	ELA.5.C.1.4
Assessment	ELA.K12.EE.5.1
Spell Base Words with Endings	ELA.5.C.3.1
Active Voice	ELA.5.C.3.1

### WEEK 6

#### Inquiry and Research Staying Alive!



##### FL B.E.S.T. ELA

Leveled Research Articles	ELA.K12.EE.2.1
Use Academic Words	ELA.5.V.1.1
Explore and Plan: Informational Texts	ELA.5.C.1.4
Conduct Research: Search Engine	ELA.5.C.4.1
Informational Texts	ELA.5.C.1.4
Refine Research: Primary and Secondary Sources	ELA.5.R.3.3
Extend Research: Write a Business E-mail	ELA.5.C.1.4
Revise Vocabulary	ELA.5.C.1.5
Edit and Peer Review	ELA.5.C.1.5
Celebrate and Reflect	ELA.5.C.2.1

### B.E.S.T. STANDARDS

For more instruction and practice with standards, go to the Resource Download Center on [SavvasRealize.com](https://www.savvasrealize.com).



- **U2W2:** *Language and Conventions*, Principal Modals Indicating Mood, p. 236. ELA.5.C.3.1
- **U2W2:** *Language and Conventions*, Verbals, p. 238. ELA.5.C.3.1
- **U2W6:** *Oral Presentation*, Elements of Effective Delivery, p. 235. ELA.5.C.2.1

UNIT THEME

# Reflections

		WEEK 1		WEEK 2		WEEK 3	
		Realistic Fiction <i>from Love, Amalia</i>		Realistic Fiction “A Pet for Calvin”		Legend   Drama The Carp / The Hermit Thrush	
Florida’s B.E.S.T. Standards for English Language Arts		FL B.E.S.T. ELA		FL B.E.S.T. ELA		FL B.E.S.T. ELA	
READING WORKSHOP	Minilesson Bank	Poem: Morning Serenade	ELA.5.C.1	Infographic: How Many Pets?	ELA.5.C.1	Infographic: Art: Then and Now	ELA.K12.EE.4.1
		Realistic Fiction: <i>from Love, Amalia</i>	ELA.K12.EE.2.1	Realistic Fiction: “A Pet for Calvin”	ELA.K12.EE.2.1	Legend and Drama: The Carp / The Hermit Thrush	ELA.K12.EE.2.1
		Shades of Meaning	ELA.5.V.1	Descriptive Language	ELA.5.V.1	Precise Words	ELA.5.V.1
		Analyze Characters	ELA.5.R.1.1	Analyze Plot Elements	ELA.5.R.1.1	Explain Literary Structure	ELA.5.R.1; ELA.5.R.3
		Make Connections	ELA.5.R.1	Summarize	ELA.5.R.3.2.a	Synthesize Information	ELA.5.R.1; ELA.5.R.3
		Talk About It	ELA.K12.EE.4.1	Write to Sources	ELA.5.C.1	Write to Sources	ELA.5.C.1
	READING-WRITING WORKSHOP BRIDGE	Academic Vocabulary	ELA.5.V.1.1; ELA.5.V.1.3	Synonyms and Antonyms	ELA.5.V.1.1; ELA.5.V.1.3	Context Clues	ELA.5.V.1.1; ELA.5.V.1.3
		Word Study	ELA.5.V.1.2	Suffixes <i>-ize, -ance, -ence, -ist</i>	ELA.5.F.1.3	Unusual Spellings	ELA.5.F.1.3
		Read Like a Writer	ELA.5.R.1	Analyze Hyperbole and Puns	ELA.5.R.3.1	Analyze Stereotypes and Anecdotes	ELA.5.R.1
		Write for a Reader	ELA.5.C.1.2	Use Hyperbole and Puns	ELA.5.C.1.2	Avoid Stereotypes and Use Anecdotes	ELA.5.C.1
WRITING WORKSHOP	Weekly Focus	Introduce and Immerse		Develop Elements		Develop Structure	
	Minilesson Bank	Organize an Opinion Essay	ELA.5.R.2.4	Develop an Opinion	ELA.5.C.1.3	Develop an Introduction and a Conclusion	ELA.5.C.1.3
		Analyze a Point of View	ELA.5.R.2.4	Develop Reasons	ELA.5.C.1.3	Develop Reasons and Supporting Information	ELA.5.C.1.3
		Analyze Reasons and Information	ELA.5.R.2.4	Develop Facts and Details	ELA.5.C.1.3	Compose with Transition Words, Phrases, and Clauses	ELA.5.C.1.3; ELA.5.C.3.1
		Brainstorm a Topic and Opinion	ELA.5.C.1.3; ELA.5.C.1.5	Include Graphic Features	ELA.5.C.1.3	Use Formatting	ELA.5.C.1.3
		Plan Your Opinion Essay	ELA.5.C.1.3; ELA.5.C.1.5	Use Technology to Produce Writing	ELA.5.C.5.2	Use Technology to Interact and Collaborate	ELA.5.C.5.2
	READING-WRITING WORKSHOP BRIDGE	Spelling	ELA.5.C.3.1	Spell Words with <i>-ize, -ance, -ence, -ist</i>	ELA.5.C.3.1	Spell Words with Unusual Spellings	ELA.5.C.3.1
		Language and Conventions	ELA.5.C.3.1	Pronouns and Antecedents	ELA.5.C.3.1	Possessive Pronouns	ELA.5.C.3.1

# Essential Question

How do the experiences of others reflect our own?



For expanded explicit instruction and corrective feedback, consult the **Reading Routines Companion**.

## WEEK 4

### Poetry

#### Poetry Collection



#### FL B.E.S.T. ELA

Riddles: Riddle Me This!	ELA.K12.EE.4.1
Poetry: Poetry Collection	ELA.K12.EE.2.1
Descriptive Words	ELA.5.V.1
Explain Figurative Language	ELA.5.R.1.4
Visualize	ELA.5.R.1
Write to Sources	ELA.5.C.1
Figurative Language	ELA.5.V.1.1; ELA.5.V.1.3
Suffixes <i>-ous</i> , <i>-eous</i> , <i>-ious</i>	ELA.5.F.1.3
Analyze Mood	ELA.5.R.1
Establish Mood	ELA.5.C.1.2

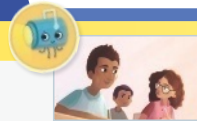
#### Writer's Craft

Edit for Capitalization	ELA.5.C.1.5; ELA.5.C.3.1
Punctuate Titles	ELA.5.C.1.5; ELA.5.C.3.1
Revise by Rearranging Ideas for Clarity	ELA.5.C.1.5
Revise by Combining Ideas for Clarity	ELA.5.C.1.5
Participate in Peer Editing	ELA.5.C.1.3; ELA.5.C.1.5
Spell Words with <i>-ous</i> , <i>-eous</i> , <i>-ious</i>	ELA.5.C.3.1
Indefinite and Reflexive Pronouns	ELA.5.C.3.1

## WEEK 5

### Realistic Fiction

#### "Life & Art" from The Wright 3



#### FL B.E.S.T. ELA

Video: Frank Lloyd Wright and the Robie House	ELA.5.C.1
Realistic Fiction: "Life & Art" from The Wright 3	ELA.K12.EE.2.1
Precise Words That Connect Themes	ELA.5.V.1
Infer Multiple Themes	ELA.5.R.1.2; ELA.K12.EE.3.1
Confirm or Correct Predictions	ELA.5.R.1
Talk About It	ELA.K12.EE.4.1
Parts of Speech	ELA.5.V.1.1
Syllable Patterns	ELA.5.F.1.3
Analyze Effect of Point of View	ELA.5.R.1.3
Use a Point of View	ELA.5.C.1.2

#### Publish, Celebrate, and Assess

Incorporate Peer and Teacher Suggestions	ELA.5.C.1.3; ELA.5.C.1.5
Publish a Final Draft	ELA.5.C.1.3
Publish and Celebrate	ELA.5.C.1.3
Prepare for Assessment	ELA.5.C.1.3
Assessment	ELA.K12.EE.5.1
Spell Words with Syllable Patterns	ELA.5.C.3.1
Adverbs	ELA.5.C.3.1

## WEEK 6

### Inquiry and Research

#### Unsung Heroes



#### FL B.E.S.T. ELA

Leveled Research Articles	ELA.K12.EE.2.1
Use Academic Words	ELA.5.V.1.1
Explore and Plan: Argumentative Text	ELA.5.C.1.5
Conduct Research: Databases	ELA.5.C.4.1
Argumentative Text: Speech	ELA.5.C.1.3
Refine Research: Bibliography	ELA.K12.EE.1.1
Extend Research: Photographs and Time Lines	ELA.5.C.5.1
Revise for Clarity	ELA.5.C.1.5
Edit and Peer Review	ELA.5.C.1.5
Celebrate and Reflect	ELA.5.C.2.1

## B.E.S.T. STANDARDS

For more instruction and practice with standards, go to the Resource Download Center on [SavvasRealize.com](https://www.savvasrealize.com).



- **U3W4:** *Reading*, Hyperbole in Poetry, p. 234. ELA.5.R.1.4

UNIT 4  
SKILLS OVERVIEW

UNIT THEME

Liberty

		WEEK 1		WEEK 2		WEEK 3		
		Historical Fiction		Historical Fiction		Informational Text		
		“Keeping Mr. John Holton Alive”		The Scarlet Stockings Spy		The Bill of Rights		
Florida’s B.E.S.T. Standards for English Language Arts		FL B.E.S.T. ELA		FL B.E.S.T. ELA		FL B.E.S.T. ELA		
READING WORKSHOP	Minilesson Bank	Infographic: The Underground Railroad	ELA.K12.EE.4.1	Map: The American Revolution	ELA.K12.EE.4.1	Word Puzzle: Our Constitution	ELA.5.C.1	
		Historical Fiction: Keeping Mr. John Holton Alive	ELA.K12.EE.2.1	Historical Fiction: The Scarlet Stockings Spy	ELA.K12.EE.2.1	Informational Text: The Bill of Rights	ELA.K12.EE.2.1	
		Words That Describe Character Traits and Actions	ELA.5.V.1	Words That Bring Historical Times, Events, or Places to Life	ELA.5.V.1	Domain-Specific Words That Connect to Liberty	ELA.5.V.1	
		Analyze Characters	ELA.5.R.1.3	Infer Multiple Themes	ELA.5.R.1.2; ELA.K12.EE.3.1	Interpret Text Structure	ELA.5.R.2.1	
		Evaluate Details	ELA.5.R.1	Monitor Comprehension	ELA.5.R.1	Summarize	ELA.5.R.3.2.a	
		Talk About It: Opinion	ELA.K12.EE.4.1	Write to Sources: Opinion	ELA.5.C.1.3	Write to Sources: Response to Informational Text	ELA.5.C.1	
	READING-WRITING WORKSHOP BRIDGE	Academic Vocabulary	Related Words	ELA.5.V.1.1; ELA.5.V.1.3	Synonyms and Antonyms	ELA.5.V.1.1; ELA.5.V.1.3	Context Clues	ELA.5.V.1.1; ELA.5.V.1.3
		Word Study	Word Parts <i>pro-</i> , <i>com-</i> , <i>con-</i>	ELA.5.F.1.3	Word Parts <i>anti-</i> , <i>mid-</i> , <i>trans-</i>	ELA.5.F.1.3	Word Parts <i>sub-</i> , <i>super-</i>	ELA.5.F.1.3
		Read Like a Writer	Analyze Dialects	ELA.5.R.1	Analyze Point of View	ELA.5.R.1.3	Analyze Author’s Purpose	ELA.5.R.2.3
		Write for a Reader	Use Dialect	ELA.5.C.1	Use Point of View	ELA.5.C.1	Choose a Writing Purpose	ELA.5.C.1.4
WRITING WORKSHOP	Weekly Focus	Introduce and Immerse		Develop Elements		Develop Structure		
	Minilesson Bank	Organize a Science Fiction Story	ELA.5.R.1.1	Develop Characters	ELA.5.C.1.2	Organize an Introduction	ELA.5.C.1.2	
		Analyze Characters and Setting	ELA.5.C.1.2	Develop Setting	ELA.5.C.1.2	Organize a Sequence of Events	ELA.5.C.1.2	
		Analyze Plot	ELA.5.C.1.2	Develop the Conflict	ELA.5.C.1.2	Choose Pacing of Events	ELA.5.C.1.2; ELA.5.C.1.5	
		Set a Purpose	ELA.5.C.1.2	Develop the Resolution	ELA.5.C.1.2	Develop the Plot	ELA.5.C.1.2	
		Plan Your Science Fiction Story	ELA.5.C.1.2	Develop Dialogue	ELA.5.C.1.2	Select a Different Genre	ELA.5.C.1.2	
	READING-WRITING WORKSHOP BRIDGE	Spelling	Spell Words with <i>pro-</i> , <i>com-</i> , <i>con-</i>	ELA.5.C.3.1	Spell Words with <i>anti-</i> , <i>mid-</i> , <i>trans</i>	ELA.5.C.3.1	Spell Words with <i>sub-</i> , <i>super-</i>	ELA.5.C.3.1
		Language and Conventions	Adjectives	ELA.5.C.3.1	Adjectives	ELA.5.C.3.1	Coordinating and Subordinating Conjunctions	ELA.5.C.3.1

# Essential Question

What does it mean to be free?



For expanded explicit instruction and corrective feedback, consult the **Reading Routines Companion**.

## WEEK 4

### Biography

#### Delivering Justice



#### FL B.E.S.T. ELA

Time Line: The Early Civil Rights Movement	ELA.K12.EE.4.1
Biography: Delivering Justice	ELA.K12.EE.2.1
Words That Connect to Civil Rights	ELA.5.V.1
Explain Relationships Between Ideas	ELA.5.R.2.2
Generate Questions	ELA.5.R.2
Write to Sources: Response to Informational Text	ELA.5.C.1
Figurative Language: Adages	ELA.5.V.1.1
Word Origins	ELA.5.F.1.3
Analyze Graphic Features	ELA.5.R.2.1
Use Graphic Features	ELA.5.C.1

#### Writer's Craft

Edit for Prepositions and Prepositional Phrases	ELA.5.C.1.5; ELA.5.C.3.1
Edit for Irregular Verbs	ELA.5.C.1.5; ELA.5.C.3.1
Edit for Collective Nouns	ELA.5.C.1.5; ELA.5.C.3.1
Edit for Subordinating Conjunctions	ELA.5.C.1.5; ELA.5.C.3.1
Edit for Punctuation Marks	ELA.5.C.1.5; ELA.5.C.3.1

Spell Words with Greek Roots	ELA.5.C.3.1
Correlative Conjunctions	ELA.5.C.3.1

## WEEK 5

### Historical Fiction

#### Ezekiel Johnson Goes West



#### FL B.E.S.T. ELA

Primary Source: <i>from</i> "I Will Go West!"	ELA.K12.EE.4.1
Historical Fiction: Ezekiel Johnson Goes West	ELA.K12.EE.2.1
Words That Connect to Western Migration	ELA.5.V.1
Explain Author's Purpose	ELA.5.R.1
Make Inferences	ELA.K12.EE.3.1
Talk About It: Opinion	ELA.K12.EE.4.1
Parts of Speech	ELA.5.V.1.1
Latin Roots <i>audi, rupt, scrib, spec</i>	ELA.5.V.1.2
Analyze Adages and Proverbs	ELA.5.R.1
Use Adages and Proverbs	ELA.5.C.1

#### Publish, Celebrate, and Assess

Revise by Adding and Deleting Ideas for Clarity	ELA.5.C.1.5
Edit for Indefinite Pronouns	ELA.5.C.1.5
Publish and Celebrate	ELA.5.C.1.2
Prepare for Assessment	ELA.5.C.1.2
Assessment	ELA.K12.EE.5.1

Spell Latin Roots <i>audi, rupt, scrib, spec</i>	ELA.5.C.3.1
Capitalization	ELA.5.C.3.1

## WEEK 6

### Inquiry and Research

#### What It Means to Be Free



#### FL B.E.S.T. ELA

Leveled Research Articles	ELA.K12.EE.2.1
Use Academic Words	ELA.5.V.1.1
Explore and Plan: Informational Text	ELA.5.C.1.5
Conduct Research: Survey	ELA.5.C.4.1
Create Project from Collected Data	ELA.5.C.4.1
Refine Research: Primary and Secondary Sources	ELA.5.R.3.3
Extend Research: Online Survey Tools	ELA.5.C.5.2
Revise for Clarity	ELA.5.C.1.5
Edit and Peer Review	ELA.5.C.1.5
Celebrate and Reflect	ELA.5.C.2.1

## B.E.S.T. STANDARDS

For more instruction and practice with standards, go to the Resource Download Center on [SavvasRealize.com](https://www.savvasrealize.com).



- **U4W1:** *Language and Conventions*, Appositives, p. 237. ELA.5.C.3.1.

UNIT THEME

# Systems

		WEEK 1		WEEK 2		WEEK 3	
		Informational Text		Informational Text		Historical Fiction	
		from Rocks and Fossils		from Earth's Water Cycle		"The Dog of Pompeii"	
Florida's B.E.S.T. Standards for English Language Arts		FL B.E.S.T. ELA		FL B.E.S.T. ELA		FL B.E.S.T. ELA	
READING WORKSHOP	Minilesson Bank	Infographic: Who Are Geologists?	ELA.5.C.1	Poem: The Water Cycle	ELA.K12.EE.4.1	Video: How Volcanoes Work	ELA.5.C.1
		Informational Text: <i>from</i> Rocks and Fossils	ELA.K12.EE.2.1	Informational Text: <i>from</i> Earth's Water Cycle	ELA.K12.EE.2.1	Historical Fiction: The Dog of Pompeii	ELA.K12.EE.2.1
		Domain-Specific Vocabulary	ELA.5.V.1.1	Words Connected to a Science Topic	ELA.5.V.1.3	Precise and Concrete Words	ELA.5.V.1
		Identify Main Idea and Details	ELA.5.R.2.2	Interpret Text Features	ELA.5.R.2.1	Analyze Plot and Setting	ELA.5.R.1.1
		Make Connections	ELA.5.R.2.2	Confirm or Correct Predictions	ELA.5.R.2	Make Inferences	ELA.K12.EE.3.1
		Talk About It	ELA.K12.EE.4.1	Write to Sources	ELA.5.C.1	Write to Sources	ELA.5.C.1
	READING-WRITING WORKSHOP BRIDGE	Academic Vocabulary	ELA.5.V.1.1; ELA.5.V.1.3	Synonyms and Antonyms	ELA.5.V.1.1; ELA.5.V.1.3	Context Clues	ELA.5.V.1.1; ELA.5.V.1.3
		Word Study	ELA.5.F.1.3.a	Syllable Patterns	ELA.5.F.1.3.a	Multisyllabic Words	ELA.5.F.1.3.a
		Read Like a Writer	ELA.5.R.2.1	Analyze Text Structure	ELA.5.R.2.1	Analyze Denotation and Connotation	ELA.5.V.1
		Write for a Reader	ELA.5.C.1.4	Develop Text Structure	ELA.5.C.1.4	Use Denotation and Connotation	ELA.5.C.1
WRITING WORKSHOP	Weekly Focus	Introduce and Immerse		Develop Elements		Develop Structure	
	Minilesson Bank	Analyze Poetry	ELA.5.R.1.4	See Like a Poet	ELA.5.C.1	Choose Line Breaks	ELA.5.C.1
		What Poetry Sounds Like	ELA.5.R.1.4	Use Rhythm and Rhyme	ELA.5.C.1	Develop Stanzas	ELA.5.C.1
		What Poetry Looks Like	ELA.5.R.1.4	Use Personification	ELA.5.C.1	Develop Poetry with Punctuation	ELA.5.C.1; ELA.5.C.3.1
		Brainstorm Ideas	ELA.5.C.1.5	Use Simile and Metaphor	ELA.5.C.1	Develop a Rhyme Scheme	ELA.5.C.1
		Plan Your Poetry	ELA.5.C.1.5	Use Interjections	ELA.5.C.1	Rewrite for Precise Meaning	ELA.5.C.1.5
	READING-WRITING WORKSHOP BRIDGE	Spelling	ELA.5.C.3.1	Spell Words with Different Syllable Patterns	ELA.5.C.3.1	Spell Multisyllabic Words	ELA.5.C.3.1
		Language and Conventions	ELA.5.C.3.1	Commas and Introductory Elements	ELA.5.C.3.1	Title Punctuation	ELA.5.C.3.1

# Essential Question

How do elements of systems change?

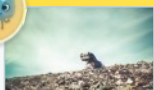


For expanded explicit instruction and corrective feedback, consult the **Reading Routines Companion**.

## WEEK 4

### Informational Texts

“Let’s Talk Trash” and “It’s Time to Get Serious About Reducing Food Waste, Feds Say”



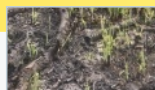
#### FL B.E.S.T. ELA

Diagram: Waste Is a Problem	ELA.K12.EE.4.1
Informational Texts: “Let’s Talk Trash”; “It’s Time to Get Serious . . .”	ELA.K12.EE.2.1
Domain-Specific Vocabulary	ELA.5.V.1.3
Compare and Contrast Accounts	ELA.5.R.2.4
Monitor Comprehension	ELA.5.R.2
Write to Sources	ELA.5.C.1

## WEEK 5

### Argumentative Text

People Should Manage Nature



#### FL B.E.S.T. ELA

Map: How People Influence Natural Systems	ELA.K12.EE.4.1
Argumentative Text: People Should Manage Nature	ELA.K12.EE.2.1
Precise Words	ELA.5.V.1
Analyze Argumentative Texts	ELA.5.R.2.4
Make Connections	ELA.5.R.2
Talk About It	ELA.K12.EE.4.1

## WEEK 6

### Inquiry and Research

Persuade the Public!



#### FL B.E.S.T. ELA

Leveled Research Articles	ELA.K12.EE.2.1
Use Academic Words	ELA.5.V.1.1
Explore and Plan: Persuasive Writing	ELA.5.C.1.5
Conduct Research: Graphics	ELA.5.C.4.1
Persuasive Writing: Persuasive PSA	ELA.5.C.1.3
Refine Research: Bibliography	ELA.5.C.4.1
Extend Research: Media	ELA.5.C.4.1
Revise a Conclusion	ELA.5.C.1.5
Edit and Peer Review	ELA.5.C.1.5
Celebrate and Reflect	ELA.5.C.2.1

### Writer’s Craft

Use Poetic License	ELA.5.C.1
Try a New Approach	ELA.5.C.1.5
Edit for Subordinating Conjunctions	ELA.5.C.1.5
Edit for Adjectives	ELA.5.C.1.5; ELA.5.C.3.1
Edit Titles and Show Emphasis	ELA.5.C.1.5

### Publish, Celebrate, and Assess

Edit for Collective Nouns	ELA.5.C.1.5; ELA.5.C.3.1
Edit for Irregular Verbs	ELA.5.C.1.5; ELA.5.C.3.1
Publish and Celebrate	ELA.5.C.1
Prepare for Assessment	ELA.5.C.1
Assessment	ELA.K12.EE.5.1

Spell Words with Schwa Sounds	ELA.5.C.3.1
Quotation Marks with Dialogue	ELA.5.C.3.1

Spell Words with Vowel Changes	ELA.5.C.3.1
Interjections	ELA.5.C.3.1