



# UNITED WE THRIVE!



**UNITED WAY**  
Big Bend

## SMALL CHANGE. BIG DIFFERENCE.

You'd like to help people in need, but the budget is tight.  
How much can your gift really do?

**\$5**  
per check

Provides educational materials, books, and snacks for children enrolled in after school programs with academic enrichment activities.

**\$15**  
per check

Funds 120 meals per month for children and families struggling with food insecurity.

**\$60**  
per check

Ensures that one month of high-quality professional childcare is available for children whose parents are enrolled in education or work training programs or who are actively seeking employment.

**\$10**  
per check

Provides weekly take home books and materials for a student struggling in reading or math.

**\$30**  
per check

Ensures that one month of high-quality professional childcare is available for children whose parents are enrolled in education or work training programs or who are actively seeking employment.

**\$110**  
per check

Provides a year of shelter & services for a woman and her children in transitional housing.

*Based on annual gift spread over 26 pay periods*

## DID YOU KNOW?

When you invest directly in the United Way of the Big Bend, you get the added benefit of a trained team and community leaders that monitor the effectiveness of the programs where your gift is invested.

### MY CONTACT INFORMATION

Your personal information is kept confidential and will not be sold or shared at any time.

☐ Anonymous

1

Last Name (required)		M.I.	First Name (required)	
Personal Email		Primary Phone #		Birth Date (mm/dd/yyyy)
Home Address		City	State	Zip
Employer		Work E-mail		

**HELP US GO GREEN!**

WITH YOUR EMAIL ADDRESS, WE SAVE PAPER AND MONEY

2

### DIRECT MY GIFT

#### GIVE DIRECTLY TO UNITED WAY OF THE BIG BEND:

- ☐ Support Initiatives that directly impact our ALICE population such as VITA, ReadingPals, MathPals, SMILE UNITED, and more.

#### COMMUNITY OUTCOMES:

- ☐ Housing  
☐ Early Learning  
☐ Safety Net  
☐ Health & Mental Health  
☐ Skills Development

#### SUPPORT THE COMMUNITY IMPACT FUND:

- ☐ Allow Volunteers to distribute funds to meet the most critical needs.

#### SUPPORT COUNTIES SERVED:

- ☐ Franklin  
☐ Gadsden  
☐ Jefferson  
☐ Leon  
☐ Liberty  
☐ Madison  
☐ Taylor  
☐ Wakulla

#### LEON COUNTY SCHOOLS – COMBINED CHARITIES

Local Independent Agency Approved by Leon County Schools

- ☐ LCS - Foundation for Leon County Schools  
☐ Leon County Humane Society  
☐ Sickle Cell Foundation  
☐ St. Francis Wildlife Association  
☐ Tallahassee Museum of History & Natural Science  
☐ United Negro College Fund

3

### TELL ME MORE

- ☐ **Endowment:** I would like information on making a gift in perpetuity and ensuring United Way is able to serve our communities for years to come.
- ☐ **Women United:** A community of smart & successful women using their energy, talent, and passion to build a stronger community. (Annual gift of \$1,000 or more)
- ☐ **Emerging Leaders:** Emerging Leaders is for young professionals who are passionate about community involvement. (Annual gift of \$365 or more)

4

### LEADERSHIP GIVING

- ☐ **Leadership Society**  
(\$1,000-\$4,999)

- ☐ **Community Society (\$5,000-\$9,999)**

This society enables UWBB to recognize donors who are willing to move to a major-gift level and make extraordinarily generous contributions to their community.

- ☐ **Tocqueville Society (\$10,000 or more)**

A national society established to recognize the understanding, commitment and support of United Way's most generous and community-minded investors. This is UWBB's most prestigious group of local philanthropists.

5

### HOW I WANT TO GIVE

- ☐ **EASY PAYROLL DEDUCTION**
- ☐ **CHECK /CASH \$** \_\_\_\_\_  
(Payment Enclosed)
- ☐ **BILL ME QUARTERLY**
- ☐ **NEW CONTINUOUS GIVER**  
(Automatically Renewed Each Year)

\_\_\_\_\_ X \_\_\_\_\_ 9 \_\_\_\_\_ = \$ \_\_\_\_\_  
AMT/Pay Period (\$100, \$50, \$30, etc.) Number of Pay Periods in Full Year

**Total Annual Gift = \$** \_\_\_\_\_

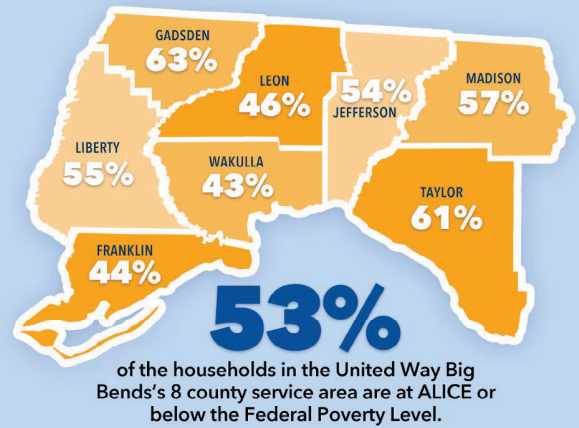
My Signature \_\_\_\_\_ Date \_\_\_\_\_

- ☐ **PAY WITH CREDIT CARD**

[uwbb.org/donate](http://uwbb.org/donate) or scan QR Code



**UNITED WAY BIG BEND PROVIDES  
ACCESS TO BASIC NECESSITIES,  
OPPORTUNITIES TO ACHIEVE ECONOMIC  
STABILITY & DEVELOP SKILLS TO EITHER  
GAIN EMPLOYMENT OR MOVE UP  
THE ECONOMIC LADDER.**



## Economic Empowerment Through Workforce Enablement for Those at or Below The **ALICE** Threshold

### 3 GOALS

### ACCESS



#### HOUSING

Increase access to dependable housing, sustainable utilities, and safe and local neighborhoods.



#### EARLY LEARNING

Increase families' access to steady, affordable, and quality child care and education.  
*(to include elementary school age and below)*

### STABILITY



#### SAFETY NET

Provide consistent safety net services during times of financial stress to both families and seniors.



#### HEALTH AND MENTAL HEALTH

Provide affordable health and mental health resources.

### DEVELOPMENT



#### SKILLS DEVELOPMENT

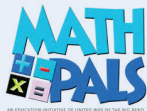
Promote educational attainment and develop necessary skills to meet future employment needs and secure self-sustaining jobs.

## GET INVOLVED

For information on individual or group volunteering opportunities, please contact us at **communityimpact@uwbb.org** or **850-414-0856**



**Read United** is an initiative that provides volunteers an opportunity to share the love of reading with children in our community over a week-long event in spring & fall each year; each participating 1st Grade classroom at Title I schools & early childcare programs receives a set of books.



**MATHpals**, is a mentoring program for kindergarten through third grade students, creates a creative and encouraging environment for learning math by matching caring mentors one-to-one with students who need extra help developing essential mathematical skills.



**ReadingPals** is a statewide early literacy initiative that provides volunteer mentors for students from Pre-k to 3rd grade who may need extra help. Mentors are matched one-to-one with students in Pre-K through third grade.



**Smile United**, a pediatric dental care initiative, in partnership with Florida Blue and Leon County Schools, provides beneficial dental services to second & sixth grade students in Title I schools across Leon County, including dental assessments, dental cleanings, oral health education, fluoride varnish and sealants.



**Volunteer Income Tax Assistance (VITA)** this program offers free tax help to low-to-moderate-income individuals and families. IRS-certified volunteers provide free basic income tax return preparation with electronic filing to qualified individuals.



**Reality Store** is a learning experience for young adults with the goal of teaching all students basic skills in financial planning, goal setting, decision making, and career planning. Designed to help young adults examine their attitudes about their futures and career expectations.

**UNITED WE THRIVE!** 307 E. SEVENTH AVENUE | TALLAHASSEE, FL 32303 | PH 850.414.0844 | [UWBB.ORG](http://UWBB.ORG)



Information you provide to United Way Big Bend is used only to properly credit your investment and communicate with you about United Way and related program information. United Way of the Big Bend respects the privacy of its donors and does not rent, trade or sell its information.

