

UNIT 1 SKILLS OVERVIEW

UNIT THEME

My Neighborhood

		WEEK 1			WEEK 2			WEEK 3		
		Realistic Fiction			Realistic Fiction			Informational Text		
Florida's B.E.S.T. Standards for English Language Arts		The Blackout			Henry on Wheels			Look Both Ways!		
		FL B.E.S.T. ELA			FL B.E.S.T. ELA			FL B.E.S.T. ELA		
READING WORKSHOP	Foundational Skills	Phonological Awareness: Medial Sounds; Recognize Alliteration; Segment and Blend Phonemes	ELA.1.F.1.2.a		Phonological Awareness: Medial Sounds; Recognize Alliteration; Segment and Blend Phonemes	ELA.1.F.1.2.a		Phonological Awareness: Medial Sounds; Recognize Alliteration; Add Phonemes	ELA.1.F.1.2.a	
		Phonics: Short <i>a</i> ; <i>Mm</i> /m/, <i>Ss</i> /s/, <i>Tt</i> /t/	ELA.1.F.1.3.c		Phonics: Short <i>i</i> ; <i>Cc</i> /k/, <i>Pp</i> /p/, <i>Nn</i> /n/	ELA.1.F.1.3.c		Phonics: Short <i>o</i> ; <i>Ff</i> /f/, <i>Bb</i> /b/, <i>Gg</i> /g/	ELA.1.F.1.3.c	
		High-Frequency Words: <i>a, I, is, his, see</i>	ELA.1.F.1.4.a		High-Frequency Words: <i>we, like, the, one, do</i>	ELA.1.F.1.4.a		High-Frequency Words: <i>look, you, was, by, are</i>	ELA.1.F.1.4.a	
	Minilesson Bank	Infographic: Neighbor to Neighbor	ELA.K12.EE.4.1		Infographic: What Is in a Neighborhood?	ELA.K12.EE.4.1		Diagram: Traffic Signals	ELA.K12.EE.4.1	
		Realistic Fiction: <i>The Blackout</i>	ELA.K12.EE.2.1		Realistic Fiction: from <i>Henry on Wheels</i>	ELA.K12.EE.2.1		Informational Text: <i>Look Both Ways!</i>	ELA.K12.EE.2.1	
		Words That Tell About Checking on a Neighbor	ELA.1.V.1.3		Words That Tell What You Can See in a Neighborhood	ELA.1.V.1.3		Words That Tell About Walking in a Neighborhood	ELA.1.V.1.3	
		Describe Characters	ELA.1.R.1.1		Describe Setting	ELA.1.R.1.1		Find Text Features	ELA.1.R.2.1	
		Use Text Evidence About Characters	ELA.1.R.1.1; ELA.K12.EE.1.1		Ask and Answer Questions About Setting	ELA.1.R.1.1		Use Text Evidence About Text Features	ELA.1.R.2.1; ELA.K12.EE.1.1	
		Talk About It: Respond to Realistic Fiction	ELA.1.R.3.2.a		Write to Sources: Response to Literature	ELA.K12.EE.1.1		Talk About It: Respond to Informational Text	ELA.1.R.3.3	
	Academic Vocabulary	Related Words	ELA.1.V.1.1; ELA.1.V.1.3		Synonyms	ELA.1.V.1.1; ELA.1.V.1.3		Context Clues	ELA.1.V.1.1; ELA.1.V.1.3	
		Handwriting	Proper Sitting and Paper Position	ELA.1.C.1	Proper Pencil Grip and Write Vertical Lines	ELA.1.C.1		Write Horizontal Lines and Backward Circles	ELA.1.C.1	
		Read Like a Writer/Write for a Reader	First-Person Text	ELA.1.R.1.3	Word Choice	ELA.1.R.3.1		Print Features	ELA.1.R.2.1	
WRITING WORKSHOP	Weekly Focus		Introduce and Immerse		Develop Elements		Develop Structure			
	Minilesson Bank	Explore Meet the Author	ELA.1.F.1.1		Explore Where Authors Get Ideas	ELA.1.C.1.5	Explore Features of a Fiction Book	ELA.1.F.1.1		
		Apply Meet the Author	ELA.1.F.1.1		Apply Where Authors Get Ideas	ELA.1.C.1.5	Apply Features of a Fiction Book	ELA.1.F.1.1		
		Explore What Good Writers Do	ELA.1.C.1.5		Explore Digital Tools We Can Use	ELA.1.C.5.2	Explore Features of a Nonfiction Book	ELA.1.F.1.1		
		Apply What Good Writers Do	ELA.1.C.1.5		Apply Digital Tools We Can Use	ELA.1.C.5.2	Apply Features of a Nonfiction Book	ELA.1.F.1.1		
		Writing Club: Overview	ELA.K12.EE.4.1		Digital Tools We Can Use Together	ELA.1.C.5.2	Making and Responding to Suggestions	ELA.1.C.1.5		
	Spelling	Spell Words with Short <i>a</i>	ELA.1.C.3.1		Spell Short <i>i</i> Words	ELA.1.C.3.1	Spell Short <i>o</i> Words	ELA.1.C.3.1		
		Nouns	ELA.1.C.3.1		Present Tense Verbs	ELA.1.C.3.1	Simple Sentences	ELA.1.C.3.1		
	Language & Conventions									

Essential Question

What is a neighborhood?



For expanded explicit instruction and corrective feedback, consult the **Reading Routines Companion**.

WEEK 4

Realistic Fiction

Garden Party and Click, Clack, Click!

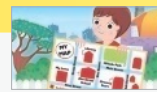


FL B.E.S.T. ELA

WEEK 5

Procedural Text

Making a Map



FL B.E.S.T. ELA

WEEK 6

Inquiry and Research

People in My Neighborhood



FL B.E.S.T. ELA

Foundational Skills

Phonological Awareness: Initial Sounds; Final Sounds; Change Phonemes

ELA.1.F.1.2

Phonics: *Qu, qu /kw/; Vv /v/, Yy /y/, Zz /z/*

ELA.1.F.1.3.c

High-Frequency Words: *where, here, for, me, go*

ELA.1.F.1.4.a

Spelling: Spell Words with *Qu, qu /kw/*

ELA.1.C.3.1

Compare Across Texts: "My Neighborhood"

ELA.1.R.3.3; ELA.K12.EE.4.1

Inquire: People in My Neighborhood

ELA.1.C.4.1

Leveled Research Articles

ELA.K12.EE.2.1

Academic Words

ELA.1.V.1.1

Explore and Plan: Introduce Informational Text

ELA.K12.EE.2.1

Conduct Research: Use Print Sources

ELA.1.C.4.1

Collaborate and Discuss: Analyze a Student Model

ELA.1.R.2.2

Identify Relevant Sources

ELA.1.C.4.1

Extend Research: Incorporate Media

ELA.1.C.5.1

Revise and Edit

ELA.1.C.1.5

Celebrate and Reflect

ELA.1.C.2.1; ELA.1.C.5.1

Writer's Craft

Explore Adding Details to Illustrations

ELA.1.F.1.1

Apply Adding Details to Illustrations

ELA.1.C.1.2; ELA.1.C.1.5

Explore Adding Details to Words

ELA.1.C.1.2; ELA.1.C.1.5

Apply Adding Details to Words

ELA.1.C.1.2; ELA.1.C.1.5

Asking and Answering Questions

ELA.1.C.1.5

Publish, Celebrate, and Assess

Choose a Book to Publish

ELA.1.C.1.5

Edit for Illustrations and Words

ELA.1.C.1.5

Prepare for Celebration

ELA.1.C.1.5; ELA.1.C.5.2

How to Celebrate

ELA.K12.EE.4.1

Assessment

ELA.K12.EE.5.1

Spell Words with Short e

ELA.1.C.3.1

Spell Words with Short u

ELA.1.C.3.1

Adjectives and Articles

ELA.1.C.3.1

Sentences with Nouns, Verbs, and Adjectives

ELA.1.C.3.1

UNIT 2 SKILLS OVERVIEW

UNIT THEME I Spy

		WEEK 1		WEEK 2		WEEK 3			
		Informational Text		Informational Text		Informational Text			
		The Life of a Frog		The Life Cycle of a Sunflower		How Do Baby Animals Grow?			
Florida's B.E.S.T. Standards for English Language Arts		FL B.E.S.T. ELA		FL B.E.S.T. ELA		FL B.E.S.T. ELA			
READING WORKSHOP	Foundational Skills	Phonological Awareness: Segment and Blend Phonemes; Final Sounds; Change Phonemes	ELA.1.F.1.2.a	Phonological Awareness: Produce Rhyming Words; Add and Remove Phonemes	ELA.1.F.1.2	Phonological Awareness: Segment and Blend Phonemes; Add and Remove Phonemes	ELA.1.F.1.2.b		
		Phonics: Initial Consonant Blends; Final Xx /ks/	ELA.1.F.1.3.a; ELA.1.F.1.3.c	Phonics: /k/ Sound Spelled ck; /s/ Sound and /z/ Sound Spelled Ss	ELA.1.F.1.3.a; ELA.1.F.1.3.c	Phonics: Final Consonant Blends; Inflectional Ending -s	ELA.1.F.1.3.a; ELA.1.F.1.3.d		
		High-Frequency Words: help, little, come, my, saw	ELA.1.F.1.4.a	High-Frequency Words: walk, she, what, take, jump	ELA.1.F.1.4.a	High-Frequency Words: this, use, from, think, blue	ELA.1.F.1.4.a		
	Minilesson Bank	Infographic: How Big Is the Baby?	ELA.K12.EE.4.1	Diagram: Parts of a Plant	ELA.K12.EE.4.1	Infographic: Baby Animal Names	ELA.K12.EE.4.1		
		Informational Text: The Life of a Frog	ELA.K12.EE.2.1	Informational Text: The Life Cycle of a Sunflower	ELA.K12.EE.2.1	Informational Text: How Do Baby Animals Grow?	ELA.K12.EE.2.1		
		Words That Tell About Frogs	ELA.1.V.1.3	Words That Tell About Plants	ELA.1.V.1.3	Words That Name Different Animals	ELA.1.V.1.3		
		Find the Main Idea	ELA.1.R.2.2	Find Text Structure	ELA.1.R.2	Discuss Author's Purpose	ELA.1.R.2		
		Find Important Details	ELA.1.R.2.2	Make Inferences	ELA.K12.EE.3.1	Ask and Answer Questions	ELA.1.R.2		
		Talk About It: Respond to Informational Text	ELA.1.R.3.3; ELA.K12.EE.4.1	Talk About It: Respond to Informational Text	ELA.K12.EE.4.1	Write to Sources: Respond to Informational Text	ELA.1.R.3.3; ELA.K12.EE.1.1		
	READING-WRITING WORKSHOP BRIDGE	Academic Vocabulary	Related Words	ELA.1.V.1.1; ELA.1.V.1.3	Synonyms	ELA.1.V.1.1; ELA.1.V.1.3	Context Clues	ELA.1.V.1.1; ELA.1.V.1.3	
		Handwriting	Letters Tt and Write Letters with Correct Slant	ELA.1.C.1.1	Letters Oo and Letters Cc	ELA.1.C.1.1	Appropriate Spacing Between Letters in Words and Letters Aa	ELA.1.C.1.1	
		Read Like a Writer/Write for a Reader	Word Choice	ELA.1.R.3.1	Word Choice	ELA.1.C.1	Description Text Structure	ELA.1.C.1; ELA.K12.EE.4.1	
WRITING WORKSHOP	Weekly Focus		Introduce and Immerse		Develop Elements		Develop Structure		
	Minilesson Bank	Informational Book	ELA.1.R.2.2	Main Idea	ELA.1.C.1.4	Organize with Structure	ELA.1.C.1.4		
		Main Idea and Details	ELA.1.R.2.2	Explore Facts and Details	ELA.1.C.1.4	Explore Features and Simple Graphics	ELA.1.C.1.4		
		Simple Graphics	ELA.1.R.2.1	Apply Facts and Details	ELA.1.C.1.4	Apply Features and Simple Graphics	ELA.1.C.1.5		
		Brainstorm a Topic and Main Idea	ELA.1.C.1.5	Explore Simple Graphics	ELA.1.C.1.4	Explore Introduction and Conclusion	ELA.1.C.1.4		
		Plan Your Informational Book	ELA.1.C.1.5	Apply Simple Graphics	ELA.1.C.1.4	Apply Introduction and Conclusion	ELA.1.C.1.4		
	READING-WRITING WORKSHOP BRIDGE	Spelling	Spell Words with Initial Consonant Blends	ELA.1.C.3.1	Spell Words with Consonant Pattern -ck	ELA.1.C.3.1	Words with Final Consonant Blends	ELA.1.C.3.1	
		Language & Conventions	Simple Sentences	ELA.1.C.3.1	Declarative Sentences	ELA.1.C.3.1	Interrogative Sentences	ELA.1.C.3.1	



For expanded explicit instruction and corrective feedback, consult the **Reading Routines Companion**.

Essential Question

What is a neighborhood?

WEEK 4

Poetry

Poetry Collection



FL B.E.S.T. ELA

Phonological Awareness: Produce Rhyming Words; Change Phonemes	ELA.1.F.1.2
Phonics: Consonant Digraphs <i>sh, th</i> ; Inflectional Ending <i>-ing</i>	ELA.1.F.1.3.a; ELA.1.F.1.3.d
High-Frequency Words: <i>goes, make, her, too, all</i>	ELA.1.F.1.4.a
Time Line: Changing with the Seasons	ELA.K12.EE.4.1
Poetry: "The Long Sleep" and "Changes"	ELA.K12.EE.2.1
Words That Tell About Animals	ELA.1.V.1.3
Describe Elements of Poetry	ELA.1.R.1
Create New Understandings	ELA.1.R.1
Talk About It: Respond to Literature	ELA.K12.EE.4.1

Word Parts	ELA.1.V.1.1
Letters <i>Dd</i> and Letters <i>Ee</i>	ELA.1.C.1.1
Word Choice	ELA.1.R.3.1

Writer's Craft

Edit for Capitalization	ELA.1.C.1.5; ELA.1.C.3.1
Explore Singular, Plural, Common, Proper, and Possessive Nouns	ELA.1.C.1.5; ELA.1.C.3.1
Apply Singular, Plural, Common, Proper, and Possessive Nouns	ELA.1.C.1.5; ELA.1.C.3.1
Explore Complete Sentences with Subject-Verb Agreement	ELA.1.C.1.5; ELA.1.C.3.1
Apply Complete Sentences with Subject-Verb Agreement	ELA.1.C.1.5; ELA.1.C.3.1
Spell Words with Consonant Digraphs <i>sh, th</i>	ELA.1.C.3.1
Exclamatory Sentences	ELA.1.C.3.1

WEEK 5

Drama

Bigger Shoes for the Big Race



FL B.E.S.T. ELA

Phonological Awareness: Change Phonemes; Medial Sounds; Distinguish Between Short and Long <i>a</i>	ELA.1.F.1.2.a
Phonics: Long <i>a</i> Sound Spelled VCe; Vowel Digraphs <i>ai</i> and <i>aw</i>	ELA.1.F.1.3.a; ELA.1.F.1.3.f
High-Frequency Words: <i>four, five, ride, your, part</i>	ELA.1.F.1.4.a
Poem: Growing Older	ELA.K12.EE.4.1
Play: <i>Bigger Shoes for the Big Race</i>	ELA.K12.EE.2.1
Words That Describe	ELA.1.V.1.3
Find Elements of Drama	ELA.1.R.3
Make Inferences	ELA.K12.EE.3.1
Write to Sources: Opinion	ELA.1.C.1.3; ELA.K12.EE.1.1

Oral Language	ELA.1.V.1.1; ELA.1.V.1.3
Letters <i>Ff</i> and Write Words	ELA.1.C.1.1
Word Choice	ELA.1.R.3.1

Publish, Celebrate, and Assess

Edit for Capitalization	ELA.1.C.1.5; ELA.1.C.3.1
Edit for Commas	ELA.1.C.1.5; ELA.1.C.3.1
Prepare for Celebration	ELA.1.C.1.5; ELA.1.C.5.2
Celebrate	ELA.K12.EE.4.1
Assessment	ELA.K12.EE.5.1
Spell Long <i>a</i> Words	ELA.1.C.3.1
Imperative Sentences	ELA.1.C.3.1

WEEK 6

Inquiry and Research

New at the Zoo!



FL B.E.S.T. ELA

Foundational Skills	
Phonological Awareness: Change Phonemes; Distinguish Between Short and Long <i>i</i> ; Segment and Blend Phonemes	ELA.1.F.1.2.e
Phonics: Long <i>i</i> Spelled VCe; /s/ Sound Spelled c; and /j/ Sound Spelled g	ELA.1.F.1.3; ELA.1.F.1.3.f
High-Frequency Words: <i>know, many, after, into, don't</i>	ELA.1.F.1.4.a
Spelling: Spell Long <i>i</i> Words	ELA.1.C.3.1
Compare Across Texts: "I Spy"	ELA.1.R.3.3; ELA.K12.EE.4.1
Inquire: Animals in Zoos	ELA.1.C.4.1
Leveled Research Articles	ELA.K12.EE.2.1
Academic Words	ELA.1.V.1.1
Explore and Plan: Introduce Persuasive Writing	ELA.K12.EE.2.1
Conduct Research: Use Print and Digital Sources	ELA.1.C.4.1
Collaborate and Discuss: Analyze Student Model	ELA.1.R.2.4
Search Online	ELA.1.C.4.1
Extend Research: Incorporate Media	ELA.1.C.5.1
Revise and Edit	ELA.1.C.1.5
Celebrate and Reflect	ELA.1.C.2.1; ELA.1.C.5.1

UNIT THEME

Imagine That

 Florida's B.E.S.T. Standards for English Language Arts		WEEK 1		WEEK 2		WEEK 3		
		Fable		Folktale		Poetry		
		The Ant and the Grasshopper		The Clever Monkey		Poetry Collection		
		FL B.E.S.T. ELA		FL B.E.S.T. ELA		FL B.E.S.T. ELA		
READING WORKSHOP	Foundational Skills		Phonological Awareness: Segment and Blend Phonemes; Manipulate Phonemes	ELA.1.F.1.2.b	Phonological Awareness: Remove Phonemes; Medial /ū/; Distinguish Between /u/ and /ū/	ELA.1.F.1.2.a	Phonological Awareness: Remove Phonemes; Segment and Blend Phonemes; Distinguish Between /e/ and /ē/	ELA.1.F.1.2.a
			Phonics: Consonant Digraphs and Trigraphs; Contractions	ELA.1.F.1.3; ELA.1.F.1.3.a	Phonics: Long o Spelled VCe; Long u and e Spelled VCe	ELA.1.F.1.3.f	Phonics: Long e Spelled e, ee; Inflectional Ending -ed	ELA.1.F.1.3.d; ELA.1.F.1.3.f
			High-Frequency Words: round, good, said, no, put	ELA.1.F.1.4.a	High-Frequency Words: could, be, old, why, of	ELA.1.F.1.4.a	High-Frequency Words: or, live, work, who, out	ELA.1.F.1.4.a
	Minilesson Bank		Web Site: Planning Your Visit to the Zoo	ELA.1.C.5.2; ELA.K12.EE.4.1	Infographic: What Is a Tricky Character?	ELA.K12.EE.4.1	Infographic: New Ideas!	ELA.K12.EE.4.1
			Fable: The Ant and the Grasshopper	ELA.K12.EE.2.1	Folktale: The Clever Monkey	ELA.K12.EE.2.1	Poetry: “Poodle Doodles”; “The Box”; “Sandcastle”	ELA.K12.EE.2.1
			Words That Tell About Past Actions	ELA.1.V.1.2; ELA.1.V.1.3	Words That Describe Actions	ELA.1.V.1.3	Words That Tell About Drawing	ELA.1.V.1.3
			Describe Plot	ELA.1.R.1.1	Discuss Author’s Purpose	ELA.1.R.1	Find Elements of Poetry	ELA.1.R.1
			Correct and Confirm Predictions About Characteristics of Genre	ELA.1.R.1	Make Connections About Author’s Purpose/Society	ELA.1.R.1	Make Connections to Other Poems	ELA.1.R.3.3
			Write to Sources: Respond to Literature	ELA.1.R.3.3	Talk About It: Retell	ELA.1.R.3.2	Talk About It: Opinion	ELA.1.C.2.1
	READING-WRITING WORKSHOP BRIDGE	Academic Vocabulary	Related Words	ELA.1.V.1.1; ELA.1.V.1.3	Synonyms and Antonyms	ELA.1.V.1.1; ELA.1.V.1.3	Context Clues	ELA.1.V.1.1; ELA.1.V.1.3
		Handwriting	Letters Gg and Jj	ELA.1.C.1.1	Letters Qq and Uu	ELA.1.C.1.1	Letters Ss and Bb	ELA.1.C.1.1
		Read Like a Writer, Write for a Reader	Third-Person Text	ELA.1.R.1.3	Word Choice	ELA.1.R.3.1	Elements of Poetry	ELA.1.R.3.1
WRITING WORKSHOP	Weekly Focus		Introduce and Immerse		Develop Elements		Develop Structure	
	Minilesson Bank		Poetry	ELA.1.R.1	The Five Senses	ELA.1.C.1.5	Line Breaks and White Space	ELA.1.R.1.4
			Poetry: What It Sounds Like	ELA.1.R.1	Explore Imagery	ELA.1.R.3.1	Explore Sound Words	ELA.1.C.1; ELA.1.V.1
			Poetry: What It Looks Like	ELA.1.R.1.4	Apply Imagery	ELA.1.C.1.5	Apply Sound Words	ELA.1.C.1; ELA.1.V.1
			Generate Ideas	ELA.1.C.1.5	Explore Word Choice	ELA.1.R.3.1	Explore Rhyme	ELA.1.C.1
			Plan Your Poetry	ELA.1.C.1.5	Apply Word Choice	ELA.1.R.3.1	Apply Rhyme	ELA.1.R.1; ELA.1.C.1
	READING-WRITING WORKSHOP BRIDGE	Spelling	Spell Words with Consonant Digraphs and Trigraphs	ELA.1.C.3.1	Spell Words with Long o Spelled VCe	ELA.1.C.3.1	Spell Long e Words	ELA.1.C.3.1
		Language & Conventions	Singular and Plural Nouns	ELA.1.C.3.1	Common and Proper Nouns	ELA.1.C.3.1	Pronouns	ELA.1.C.3.1



For expanded explicit instruction and corrective feedback, consult the **Reading Routines Companion**.

Essential Question

How can we use our imaginations?

WEEK 4

Fable

The Cow and the Tiger



FL B.E.S.T. ELA

WEEK 5

Persuasive Text

Thumbs Up for Art and Music!



FL B.E.S.T. ELA

WEEK 6

Inquiry and Research

More than a Tale



FL B.E.S.T. ELA

FOUNDATIONAL SKILLS

Phonological Awareness: Segment and Blend Phonemes: Compound Words; Add Phonemes

ELA.1.F.1.2.e

Phonics: *r*-Controlled Vowels *or*, *ore*; Compound Words

ELA.1.F.1.3.b;
ELA.1.F.1.3.e

High-Frequency Words: *eat*, *play*, *so*, *their*, *some*

ELA.1.F.1.4.a

Spelling: Spell Words with *r*-Controlled Vowels *or*, *ore*

ELA.1.C.3.1

Compare Across Texts: "Imagine That"

ELA.1.R.3.3;
ELA.K12.EE.4.1

Inquire: Folktales

ELA.1.C.4.1

Leveled Research Articles

ELA.K12.EE.2.1

Academic Words

ELA.1.V.1.1

Explore and Plan: Explore Persuasive Writing

ELA.K12.EE.2.1

Conduct Research: Use Audio and Video Sources

ELA.1.C.4.1;
ELA.1.C.5.2

Collaborate and Discuss: Analyze Student Model

ELA.1.R.2.4

Determine Central Message

ELA.1.R.1.2

Extend Research: Incorporate Media

ELA.1.C.5.1

Revise and Edit

ELA.1.C.1.5

Celebrate and Reflect

ELA.1.C.2.1;
ELA.1.C.5.1

B.E.S.T. STANDARDS

For more instruction and practice with standards, go to the Resource Download Center on SavvasRealize.com.



- **U3W1:** *Reading*, Moral of a Story, p. 353. ELA.1.R.1.2
- **U3W1:** *Language and Conventions*, Irregular Plural Nouns, p. 359. ELA.1.C.3.1
- **U3W3:** *Language and Conventions*, Regular and Irregular Verb Tenses, Use Irregular Past Tense, p. 358. ELA.1.C.3.1

UNIT THEME

Making History

		WEEK 1		WEEK 2		WEEK 3	
		Biography		Biography		Historical Fiction	
		Through Georgia's Eyes		Jackie Robinson		Before the Railroad Came	
Florida's B.E.S.T. Standards for English Language Arts		FL B.E.S.T. ELA		FL B.E.S.T. ELA		FL B.E.S.T. ELA	
READING WORKSHOP	Foundational Skills	Phonological Awareness: Segment and Blend Sounds; Final Sounds; Change Phonemes	ELA.1.F.1.2.a	Phonological Awareness: Segment and Blend Phonemes; Change Phonemes	ELA.1.F.1.2.a	Phonological Awareness: Final Sounds; Remove Phonemes	ELA.1.F.1.2.a
		Phonics: <i>r</i> -Controlled Vowel <i>ar</i> ; Inflectional Ending <i>-es</i> , Plural <i>-es</i>	ELA.1.F.1.3.b; ELA.1.F.1.3.d	Phonics: <i>r</i> -Controlled Vowels <i>er, ir, ur</i> ; Endings <i>-ed, -ing</i>	ELA.1.F.1.3.b; ELA.1.F.1.3.d	Phonics: Comparative Endings; Trigraph <i>dge</i>	ELA.1.F.1.3; ELA.1.F.1.3.a
		High-Frequency Words: <i>new, thank, always, found, please</i>	ELA.1.F.1.4.a	High-Frequency Words: <i>were, pull, every, any, very</i>	ELA.1.F.1.4.a	High-Frequency Words: <i>away, our, light, never, pretty</i>	ELA.1.F.1.4.a
	Minilesson Bank	Time Line: Frida Kahlo: Artist	ELA.1.R.2.1; ELA.K12.EE.4.1	Web Site: Martin Luther King, Jr.	ELA.K12.EE.4.1	Infographic: Technology in Our Lives	ELA.K12.EE.4.1
		Biography: <i>Through Georgia's Eyes</i>	ELA.K12.EE.2.1	Biography: <i>Jackie Robinson</i>	ELA.K12.EE.2.1	Historical Fiction: <i>Before the Railroad Came</i>	ELA.K12.EE.2.1
		Words That Tell About Seeing the World Differently	ELA.1.V.1.3	Words That Describe Admiration	ELA.1.V.1.2; ELA.1.V.1.3	Words That Tell About Life on a Cattle Ranch	ELA.1.V.1.3
		Describe Connections	ELA.1.R.2	Use Text Structure	ELA.1.R.2	Determine Theme	ELA.1.R.1.1
		Ask and Answer Questions	ELA.1.R.2	Create New Understandings	ELA.1.R.2	Make Connections About Themes in Other Texts	ELA.1.R.1
		Talk About It: Retell	ELA.1.R.3.2	Write to Sources: Respond to Informational Text	ELA.1.C.1; ELA.K12.EE.1.1	Talk About It: Opinion	ELA.K12.EE.1.1
	Academic Vocabulary	Related Words	ELA.1.V.1.1	Antonyms	ELA.1.V.1.1	Context Clues	ELA.1.V.1.1; ELA.1.V.1.3
		Handwriting	Letters <i>Mm</i> and <i>Hh</i>	Write Sentences with Appropriate Spacing and Letters <i>Vv</i>	ELA.1.C.1.1	Letters <i>Yy</i> and <i>Ww</i>	ELA.1.C.1.1
		Read Like a Writer, Write for a Reader	Word Choice	Graphic Features	ELA.1.R.2.3	First-Person Text	ELA.1.R.1.3
WRITING WORKSHOP	Weekly Focus		Introduce and Immerse	Develop Elements		Develop Structure	
	Minilesson Bank	Personal Narrative	ELA.1.R.1.3	Setting	ELA.1.C.1.2	What Happens First	ELA.1.C.1.2
		Personal Narrative: Characters and Setting	ELA.1.R.1.1	Explore The Narrator: You	ELA.1.C.1.2	Explore What Happens Next	ELA.1.C.1.2
		Personal Narrative: Plot	ELA.1.R.1.1	Apply The Narrator: You	ELA.1.C.1.2	Apply What Happens Next	ELA.1.C.1.2
		Generate Ideas	ELA.1.C.1.5	Explore Problem and Resolution	ELA.1.C.1.2	Explore What Happens Last	ELA.1.C.1.2
		Plan Your Personal Narrative	ELA.1.C.1.5	Apply Problem and Resolution	ELA.1.C.1.2	Apply What Happens Last	ELA.1.C.1.2
	Spelling	Spell Words with <i>r</i> -Controlled Vowel <i>ar</i>	ELA.1.C.3.1	Spell Words with <i>r</i> -Controlled Vowel <i>er, ir, ur</i>	ELA.1.C.3.1	Spell Words That Compare	ELA.1.C.3.1
		Language & Conventions	Action Words	Past Verb Tense	ELA.1.C.3.1	Future Verb Tense	ELA.1.C.3.1

Essential Question

Why is the past important?



For expanded explicit instruction and corrective feedback, consult the **Reading Routines Companion**.

WEEK 4

Informational Text

What Is the Story of Our Flag? and The First American Flag



FL B.E.S.T. ELA

Phonological Awareness: Middle and Final Sounds; Distinguish Between /a/ and /ā/; Change Phonemes	ELA.1.F.1.2
Phonics: Diphthongs <i>ow</i> , <i>ou</i> ; Vowel Digraphs <i>ai</i> , <i>ay</i>	ELA.1.F.1.3; ELA.1.F.1.3.f
High-Frequency Words: <i>again</i> , <i>how</i> , <i>read</i> , <i>soon</i> , <i>both</i>	ELA.1.F.1.4.a

Poem: What Is America?	ELA.K12.EE.4.1
Informational Text: <i>What Is the Story of Our Flag? and The First American Flag</i>	ELA.K12.EE.2.1
Words That Tell About Our Flag	ELA.1.V.1.3
Compare and Contrast Texts	ELA.1.R.3.3
Find Important Details About Comparing and Contrasting Texts	ELA.1.R.2.2; ELA.1.R.3.3
Talk About It: Respond to Informational Texts	ELA.1.R.3.3

Word Parts	ELA.1.V.1.1; ELA.1.V.1.3
Letters <i>Xx</i> and <i>Kk</i>	ELA.1.C.1.1
Print Features	ELA.1.R.2.1

Writer's Craft

Capitalization	ELA.1.C.1.5; ELA.1.C.3.1
Explore Punctuation Marks	ELA.1.C.1.5; ELA.1.C.3.1
Apply Punctuation Marks	ELA.1.C.1.5; ELA.1.C.3.1
Explore Verbs	ELA.1.C.1.5; ELA.1.C.3.1
Apply Verbs	ELA.1.C.1.5; ELA.1.C.3.1

Spell Words with Diphthongs <i>ow</i> , <i>ou</i>	ELA.1.C.3.1
Verbs	ELA.1.C.3.1

WEEK 5

Biography



Eleanor Roosevelt

FL B.E.S.T. ELA

Phonological Awareness: Final Sounds; Initial and Final Sounds; Distinguish Between /o/ and /ō/	ELA.1.F.1.2
Phonics: Diphthongs <i>oi</i> , <i>oy</i> ; Vowel Digraph <i>ea</i>	ELA.1.F.1.3; ELA.1.F.1.3.f
High-Frequency Words: <i>carry</i> , <i>going</i> , <i>been</i> , <i>words</i> , <i>does</i>	ELA.1.F.1.4.a

Infographic: Helpful Heroes	ELA.K12.EE.4.1
Biography: <i>Eleanor Roosevelt</i>	ELA.K12.EE.2.1
Words That Tell About Democracy	ELA.1.V.1.3
Find the Main Idea	ELA.1.R.2.2
Ask and Answer Questions About Main Idea	ELA.1.R.2.2
Write to Sources: Respond to Informational Text	ELA.1.C.1; ELA.K12.EE.1.1

Oral Language	ELA.1.V.1.1
Letters <i>Zz</i> and Write Sentences	ELA.1.C.1.1
Third-Person Text	ELA.1.R.2; ELA.1.C.1

Publish, Celebrate, and Assess

Edit for Pronouns	ELA.1.C.1.5; ELA.1.C.3.1
Edit for Adjectives and Articles	ELA.1.C.1.5; ELA.1.C.3.1
Prepare for Celebration	ELA.1.C.1.5; ELA.1.C.5.1
Celebrate	ELA.1.C.2.1
Assessment	ELA.K12.EE.5.1

Spell Words with Diphthongs <i>oi</i> , <i>oy</i>	ELA.1.C.3.1
Compound Sentences	ELA.1.C.3.1

WEEK 6

Inquiry and Research



My Interview

FL B.E.S.T. ELA

Foundational Skills	
Phonological Awareness: Segment and Blend Sounds; Middle and Final Sounds; Distinguish Between /i/ and /ī/	ELA.1.F.1.2.a
Phonics: Endings; Vowel Digraph <i>ie</i>	ELA.1.F.1.3.d; ELA.1.F.1.3.f
High-Frequency Words: <i>other</i> , <i>right</i> , <i>may</i> , <i>give</i> , <i>number</i>	ELA.1.F.1.4.a
Spelling: Spell Words with Endings	ELA.1.C.3.1
Compare Across Texts: "Making History"	ELA.1.R.3.3; ELA.K12.EE.4.1
Inquire: Interview	ELA.1.C.4.1
Leveled Research Articles	ELA.K12.EE.2.1
Academic Words	ELA.1.V.1.1
Explore and Plan: Explore Informational Writing	ELA.K12.EE.2.1
Conduct Research: Interview a Person	ELA.1.C.4.1
Collaborate and Discuss: Analyze Student Model	ELA.1.R.2.2
Take Notes	ELA.1.C.1
Extend Research: Write a Thank-You Note	ELA.1.C.1
Revise and Edit	ELA.1.C.1.5
Celebrate and Reflect	ELA.1.C.2.1; ELA.1.C.5.1

B.E.S.T. STANDARDS

For more instruction and practice with standards, go to the Resource Download Center on [SavvasRealize.com](https://www.savvasrealize.com).



- **U4W1:** *Reading*, Words and Visuals in Text, p. 356. ELA.1.R.2.3
- **U4W4:** *Reading*, Compare and Contrast, p. 357. ELA.1.R.3.3

UNIT THEME

Beyond My World

		WEEK 1		WEEK 2		WEEK 3		
		Informational Text		Informational Text		Persuasive Text		
Florida's B.E.S.T. Standards for English Language Arts		Every Season		Seasons Around the World		In Spring		
		FL B.E.S.T. ELA		FL B.E.S.T. ELA		FL B.E.S.T. ELA		
READING WORKSHOP	Foundational Skills	Phonological Awareness: Middle and Final Sounds; Segment and Blend Phonemes; Distinguish Between /o/ and /ō/	ELA.1.F.1.2.c; ELA.1.F.1.2.d	Phonological Awareness: Distinguish Between /u/ and /ū/; Segment and Blend Phonemes	ELA.1.F.1.2.c; ELA.1.F.1.2.d; ELA.1.F.1.2.e	Phonological Awareness: Segment and Blend Phonemes; Manipulate Phonemes	ELA.1.F.1.2.a; ELA.1.F.1.2.b	
		Phonics: Long o Spelled oa, ow, oe; Consonant Blends and Trigraphs	ELA.1.F.1.3.a; ELA.1.F.1.3.f	Phonics: Long i Spelled igh; Suffixes -er, -or	ELA.1.F.1.3; ELA.1.F.1.3.f	Phonics: Vowel Teams ue, ew, ui; Prefixes re-, un-	ELA.1.F.1.3; ELA.1.F.1.3.f	
		High-Frequency Words: would, buy, people, about, write	ELA.1.F.1.4.a	High-Frequency Words: once, done, water, wash, upon	ELA.1.F.1.4.a	High-Frequency Words: sentence, off, because, laugh, open	ELA.1.F.1.4.a	
	Minilesson Bank	Infographic: Seasons of an Apple Tree	ELA.1.R.2.1; ELA.K12.EE.4.1	Web Site: Seasons Here and There	ELA.K12.EE.4.1	Infographic: Seasonal Activities	ELA.K12.EE.4.1	
		Informational Text: Every Season	ELA.K12.EE.2.1	Informational Text: Seasons Around the World	ELA.K12.EE.2.1	Persuasive Text: In Spring	ELA.K12.EE.2.1	
		Words That Tell About the Seasons	ELA.1.V.1.3	Words That Tell About the Weather	ELA.1.V.1.3	Words That Tell About Animals	ELA.1.V.1.3	
		Use Text Structure	ELA.1.R.2	Use Text Features	ELA.1.R.2.1	Identify Persuasive Text	ELA.1.R.2.4	
		Make Connections	ELA.1.R.2	Correct and Confirm Predictions About Text Features	ELA.1.R.2.1	Correct and Confirm Predictions About Persuasive Text	ELA.1.R.2	
		Talk About It: Response to Informational Text	ELA.1.R.3.3; ELA.K12.EE.4.1	Write to Sources: Opinion	ELA.1.C.1	Write to Sources: Response to Informational Text	ELA.1.R.3.3; ELA.1.C.1	
	READING-WRITING WORKSHOP BRIDGE	Academic Vocabulary	Related Words	ELA.1.V.1.1	Antonyms	ELA.1.V.1.1; ELA.1.V.1.3	Context Clues	ELA.1.V.1.1; ELA.1.V.1.3
		Handwriting	Numerals 1, 2 and Numerals 3, 4	ELA.1.C.1	Numerals 5, 6 and Numerals 7, 8	ELA.1.C.1	Numerals 9, 0 and Write Sentences	ELA.1.C.1.1
		Read Like a Writer, Write for a Reader	Text Structure	ELA.1.C.1	Graphic Features	ELA.1.R.2.1	Word Choice	ELA.1.R.3.1; ELA.1.C.1
WRITING WORKSHOP	Weekly Focus	Introduce and Immerse		Develop Elements		Develop Structure		
	Minilesson Bank	How-to Books	ELA.1.R.2	Introduction and Conclusion	ELA.1.C.1.4	Organize with Structure	ELA.1.C.1.4	
		How-to Books: Instructions	ELA.1.R.2	Explore Instructions	ELA.1.R.2; ELA.1.C.1.4	Explore Steps in a Process	ELA.1.C.1.4	
		How-to Books: Graphics	ELA.1.R.2.1	Apply Instructions	ELA.1.C.1.4	Apply Steps in a Process	ELA.1.C.1.4	
		Generate Ideas	ELA.1.C.1.5	Explore Simple Graphics	ELA.1.R.2.1; ELA.1.C.1.4	Explore Features and Simple Graphics	ELA.1.R.2.1; ELA.1.C.1.4	
		Plan Your How-to Book	ELA.1.C.1.5	Apply Simple Graphics	ELA.1.C.1.4	Apply Features and Simple Graphics	ELA.1.C.1.4	
	READING-WRITING WORKSHOP BRIDGE	Spelling	Spell Words with Long o Spelled oa, ow, oe	ELA.1.C.3.1	Spell Long i Words	ELA.1.C.3.1	Spell Words with Vowel Teams ue, ew, ui	ELA.1.C.3.1
		Language & Conventions	Adverbs	ELA.1.C.3.1	Transitions and Conjunctions	ELA.1.C.3.1	Prepositions	ELA.1.C.3.1



For expanded explicit instruction and corrective feedback, consult the **Reading Routines Companion**.

Essential Question

How do the seasons affect us?

WEEK 4

Fiction

My Autumn Book



FL B.E.S.T. ELA

Phonological Awareness: Remove Phonemes; Segment and Blend Phonemes; Manipulate Phonemes	ELA.1.F.1.2.a; ELA.1.F.1.2.b
Phonics: Long <i>i</i> , Long <i>o</i> ; Suffixes <i>-ly</i> , <i>-ful</i>	ELA.1.F.1.3; ELA.1.F.1.3.f
High-Frequency Words: <i>move</i> , <i>learn</i> , <i>eight</i> , <i>house</i> , <i>only</i>	ELA.1.F.1.4.a

Poem: Season to Season	ELA.1.C.1
Fiction: <i>My Autumn Book</i>	ELA.K12.EE.2.1
Words That Describe Autumn Weather	ELA.1.V.1.3
Determine Theme	ELA.1.R.1.1
Find Important Details About Theme	ELA.1.R.1.1
Talk About It: Retell	ELA.1.R.3.2.a

Word Parts	ELA.1.V.1.1
Write Answers	ELA.1.C.1.1
Word Choice	ELA.1.R.3.1; ELA.1.C.1

Writer's Craft

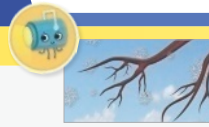
Prepositions	ELA.1.C.1.5; ELA.1.C.3.1
Explore Adverbs That Convey Time	ELA.1.C.1.5; ELA.1.C.3.1
Apply Adverbs That Convey Time	ELA.1.C.1.5; ELA.1.C.3.1
Explore Punctuation Marks	ELA.1.C.1.5; ELA.1.C.3.1
Apply Punctuation Marks	ELA.1.C.1.5; ELA.1.C.3.1

Spell Long <i>i</i> and Long <i>o</i> Words	ELA.1.C.3.1
Prepositional Phrases	ELA.1.C.3.1

WEEK 5

Informational Text

Signs of Winter



FL B.E.S.T. ELA

Phonological Awareness: Segment and Blend Phonemes; Manipulate Sounds; Manipulate Phonemes	ELA.1.F.1.2.a; ELA.1.F.1.2.b
Phonics: Open and Closed Syllables; Vowel Teams <i>oo</i> , <i>ou</i>	ELA.1.F.1.3.e; ELA.1.F.1.3.f
High-Frequency Words: <i>today</i> , <i>warm</i> , <i>years</i> , <i>should</i> , <i>world</i>	ELA.1.F.1.4.a

Infographic: Animals in Winter	ELA.K12.EE.4.1
Informational Text: <i>Signs of Winter</i>	ELA.K12.EE.2.1
Words That Tell About Conditions Outside	ELA.1.V.1
Use Pictures and Text	ELA.1.R.2.3
Make Inferences About Illustrations and Words	ELA.K12.EE.3.1
Talk About It: Opinion	ELA.K12.EE.1.1; ELA.K12.EE.4.1

Oral Language	ELA.1.V.1.1
Write Answers	ELA.1.C.1.1
Graphics	ELA.1.R.2.1; ELA.1.R.2.3

Publish, Celebrate, and Assess

Edit for Spelling	ELA.1.C.1.5; ELA.1.C.3.1
Edit for Prepositions	ELA.1.C.1.5; ELA.1.C.3.1
Prepare for Celebration	ELA.1.C.1.5; ELA.1.C.5.1
Publish and Celebrate	ELA.1.C.2.1
Assessment	ELA.K12.EE.5.1

Spell Words with Open and Closed Syllables	ELA.1.C.3.1
Commas in Dates and Sentences	ELA.1.C.3.1

WEEK 6

Inquiry and Research

The Best Season



FL B.E.S.T. ELA

FOUNDATIONAL SKILLS	
Phonological Awareness: Segment and Blend Phonemes; Manipulate Sounds; Segment and Blend Phonemes	ELA.1.F.1.2.a; ELA.1.F.1.2.b
Phonics: Vowel Sound in <i>foot</i> ; Final Stable Syllable <i>-le</i>	ELA.1.F.1.3; ELA.1.F.1.3.e
High-Frequency Words: <i>mother</i> , <i>father</i> , <i>another</i> , <i>through</i> , <i>picture</i>	ELA.1.F.1.4.a
Spelling: Spell Words with Vowel Sound in <i>foot</i>	ELA.1.C.3.1
Compare Across Texts: "Beyond My World"	ELA.1.R.3.3; ELA.K12.EE.4.1
Inquire: The Season I Like Best	ELA.1.C.4.1
Leveled Research Articles	ELA.K12.EE.2.1
Academic Words	ELA.1.V.1.1
Explore and Plan: Explore Persuasive Writing	ELA.K12.EE.2.1
Conduct Research: Search Online	ELA.1.C.4.1; ELA.1.C.5.1
Collaborate and Discuss: Analyze Student Model	ELA.1.R.2.3
Create a Fact Sheet	ELA.1.C.1
Extend Research: Explore Props and Costumes	ELA.1.C.5.1
Revise and Edit	ELA.1.C.1.5
Celebrate and Reflect	ELA.1.C.2.1; ELA.1.C.5.1

B.E.S.T. STANDARDS

For more instruction and practice with standards, go to the Resource Download Center on [SavvasRealize.com](https://www.savvasrealize.com).



- **U5W2:** *Reading*, Maps and Captions, p. 354. ELA.1.R.2.1
- **U5W2:** *Reading*, Graphs and Captions, p. 355. ELA.1.R.2.1