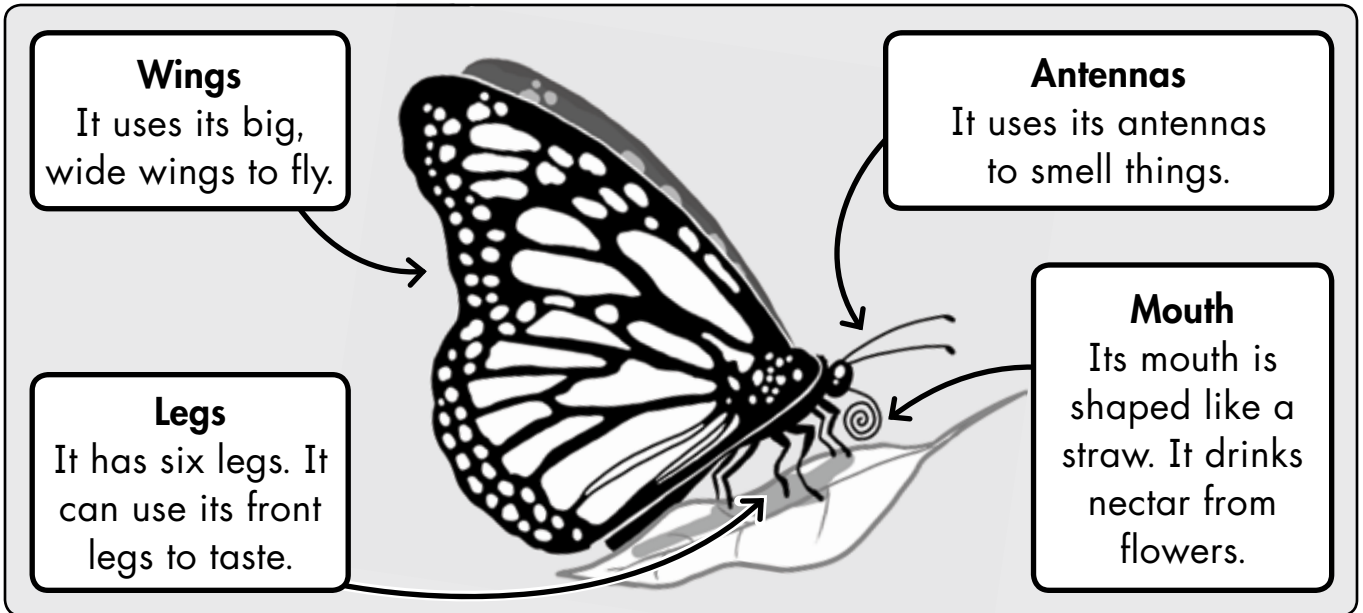


Name: \_\_\_\_\_

# Butterfly Diagram

Use the diagram to answer the questions.



1. Which body part can it use to smell?

 mouth antennae legs

2. How many legs does a butterfly have?

 two six eight

3. What does it do with its mouth?

 drinks nectar flies smells

4. Which body part is shaped like a straw?

 wing head mouth

Now color the diagram. You can color it to look like a monarch butterfly. Or make it any colors you like!