

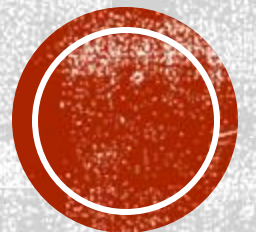
WELCOME TO THE 5TH GRADE TEAM!

Your PES teachers are:

Ms. Nash-Brick & Mortar (B&M)

Ms. Muy-Digital Academy (DA)

Ms. Clemons-Digital Academy (DA)





- **Be CONSISTENT.** Half the battle is doing what needs to be done because no one else will.
- **Be PERSISTENT.** The other half is doing what needs to be done until it is finished because only YOU can.
- If we can take one thing from this new experience it is this; time is not guaranteed and therefore we must value this moment which we have right now, making the most of it and at the same time taking pause to capture it in our mind.
 - Every second you are given is a treasure, use it as if it were of infinite value.
- This is our time.... **TO CHANGE THE GAME!**



ABOUT MS. NASH (B&M)

- Born and raised in Chicago, Illinois
- Graduate of Florida Agricultural & Mechanical University
 - Teacher for 8 years
 - Taught grades 1, 2, 3, & 5
- Site Coordinator for the 21st Century afterschool program
 - Dog Mom to a pit-bull named JT
- Love to read, eat snacks, and spend time with family/close friends
 - Favorite movie: Moana



ABOUT MS. MUY (DA)

- Born in Miami, Florida
- Graduate of Florida State University
 - Teacher for 15 years
 - Taught 4th and 5th grade
 - Site Coordinator for
- Dog Mom of two Great Danes, Maddon and Wrigley
- Love to read, spend time with family/close friends, crafting, and playing/watching sports
 - Favorite movie: Space Jam

ABOUT MS. CLEMONS (DA)



- Born in Tallahassee and raised in Tampa
- Graduate of the University of Florida & Flagler College
 - Teacher for 4 years
 - Taught 3rd grade
- Love to spend time with family and laugh!!
- Favorite movie: The (original) Lion King

Masks



MASKS ARE REQUIRED

Masks are required by students and staff on buses, during transitions, and whenever 6 feet of social distancing is not possible.



ALLOWABLE MASKS

Allowable masks include non-medical grade disposable face masks and cloth face coverings that go over the nose and mouth.



ADDITIONAL BARRIERS

Full-face shields are not a replacement for face masks, but can be used as an additional barrier.



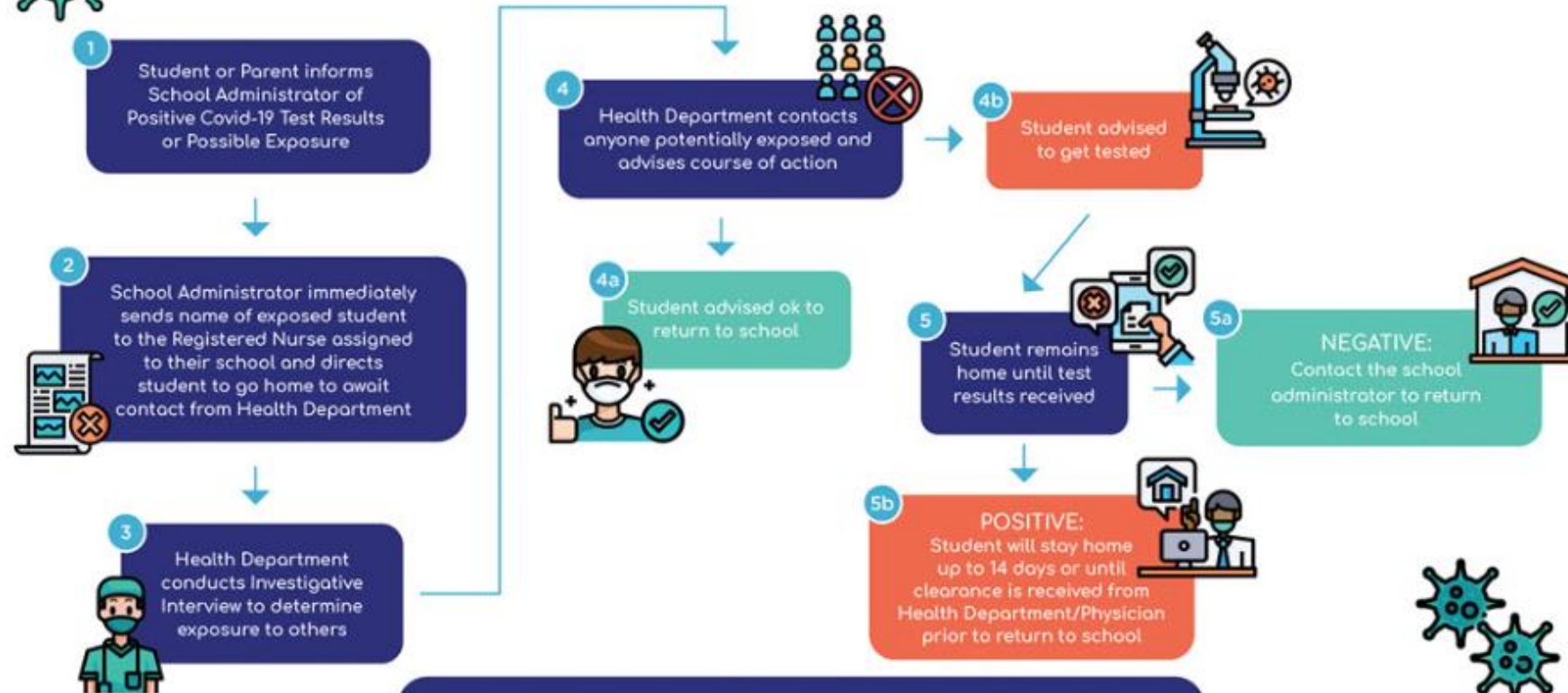
STUDENTS WHO FAIL TO COMPLY

Students who fail to comply will participate in progressive discipline beginning with counseling and proceeding to additional consequences as necessary. Continued noncompliance of face coverings could result in the student's removal from in-person enrollment and being moved to the Digital Academy.

Visit www.LeonSchools.net/ReOpenLeon for more information.

Protocol information is subject to change based on release of new CDC Guidelines.

COVID-19 Reporting And Testing Protocol For Students



The above is subject to change based on release of new CDC Guidelines



Screening for COVID-19 Symptoms: Students:

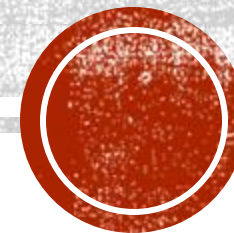
- Parents must ensure they do not send a child to a school campus if their child has COVID-19 symptoms confirmed with COVID-19.
- Teachers will monitor students and refer them to the appropriate COVID location for screening if symptoms suspected or are present.
- Any student who is determined by the school nurse to have COVID-19 symptoms while in a LCS facility is immediately placed in a supervised isolation room until the student can be picked up by a parent or guardian.

COVID-19 Reporting and Testing Protocol for Students:

When a student or parent informs school administration of having a positive COVID-19 test or possible exposure, the following protocol will be used:

- STEP 1.** School Administrator immediately sends the name of the exposed student to the Registered Nurse at their school and directs the student to go or stay home until contacted by the health department.
- STEP 2.** The Health Department conducts an investigative interview to determine exposure of any other students.
- STEP 3.** The Health Department contacts anyone potentially exposed and advises their course of action.
- STEP 4.** Based on the Health Department determinations, the student will stay out the prescribed length of time released by the health department or physician to return to school.

COVID-19 REPORTING AND TESTING PROTOCOL FOR STUDENTS



BRICK & MORTAR DAILY SCHEDULE



5TH GRADE SCHEDULE

8:15-9:00 MORNING ROUTINE

- Reflex Math
 - A.R.
 - DOL
- iReady (minutes/interventions)

9:05-10:35 ELA

- Ready reading/Wonders
 - Social Studies

10:35-12:05 MATH

- Go Math
- Spiral Review

12:05-12:30 LUNCH

12:35-1:20 SCIENCE/IREADY

- MWF-science
- TR-iReady

1:20-2:05 WRITING

2:05-2:45 SPECIAL AREA

2:45-2:50 RECESS/READ ALOUD





- **Be Prompt:** We understand that mornings do not always go as planned. However, it is imperative that your child is at school on time. Schools at 8:15 am.
- **Be Prepared:** Students are expected to have all the supplies needed daily including pencils, paper, agenda, and Binder, etc.
- **Be Positive:** I expect for all students to come to school with a positive attitude towards learning and others.
- **Be Polite:** Students are expected to be respectful, always, to both adults and their fellow peers. Of course, issues will arise, but inappropriate language, improper conduct or ill-intentioned actions are unacceptable.
- **Be Productive:** Students are expected to put forth their best effort and complete all assignments, including homework.
- ***In addition to classroom rules, students are to adhere to school-wide policies.**

DIGITAL ACADEMY SCHEDULE

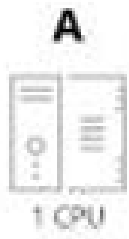


DA	Group A	Group B	Group C
8:30-9:30	ELA	Math	iReady reading & math
9:40-10:40	iReady reading & math	ELA	Math
10:50-11:50	Math	iReady reading & math	ELA
11:50-12:30	LUNCH/RECESS		
12:30-1:30	Small Group/ Independent		
1:40-2:40	Special Area		
2:40-2:50	READ ALOUD		

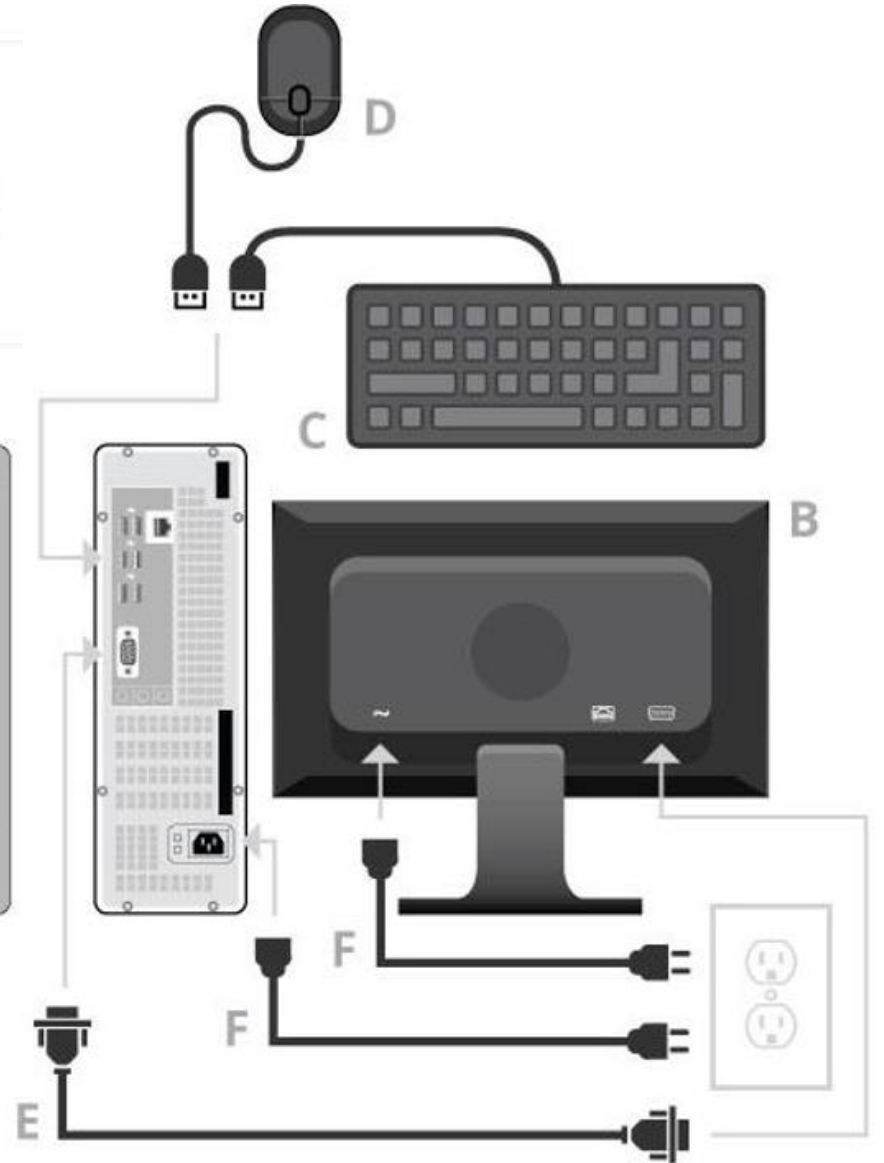




- **Be Prompt:** We understand that mornings do not always go as planned. However, it is imperative that your child is signed on at his/her assigned zoom meeting time.
- **Be Prepared:** Students are expected to have all supplies needed daily for online instruction (pencils, folders, erasers, etc.)
- **Be Positive:** We expect for all students to sign in to zoom meetings with a positive attitude towards learning and others.
- **Be Polite:** Students are expected to be respectful, always, to both adults and their fellow peers. Of course, issues will arise, but inappropriate language, improper conduct or ill-intentioned actions are unacceptable.
- **Be Productive:** Students are expected to put forth their best effort and complete all assignments, including homework given by his/her teacher.
- ***In addition to classroom rules, students are to adhere to school-wide policies.**



Computer Assembly Guide



5TH GRADE PLAYOFFS

Digital Academy

60% (40% assessments & 20% quizzes)

40% (20% participation & 20% classwork/homework)

Homework will be given nightly and due in class the following school day.

Homework will be assigned according to the skills and strategies taught that day.

Nightly Review:

- AR Reading for 20 minutes
- Math Facts (multiplication & division)



Brick & Mortar

60% (40% assessments & 20% quizzes)

40% (20% participation & 20% classwork/homework)

Homework will be given nightly and due in class the following school day. Homework will be assigned according to the skills and strategies taught that day.

Nightly Review:

- AR Reading for 20 minutes
- Math Facts (multiplication & division)
- Science Article





BEHAVIOR/WORK STUDY SKILLS

- Daily Behavior & Work Study habits will contribute to student's weekly grades, as well as their term grades.
- Students will receive verbal redirection if their behavior is off task; if the problem continues, parents and/or administration will be notified. (It will also be noted in FOCUS.)

Performance Codes	
E= Very consistent demonstration	S= Consistent demonstration N= Inconsistent demonstration
BEHAVIOR	WORK/STUDY SKILLS
1. Follows Rules	5. Works cooperatively
2. Demonstrates self-control	6. Works independently
3. Respects adults and peers	7. Exhibits on-task behavior
4. Handles conflicts and problems appropriately	8. Completes assignments
	9. Follows directions



HOW TO CONNECT TO FOCUS

https://leon.focusschoolsoftware.com/focus/auth/

Leon County Schools Parent Portal Registration

Welcome to the Leon County Schools - Focus Parent Portal Registration.



- Parents must visit the link below to register for an account. If you have previously created an account, you should not have to register again.
- Parents will use this site to check grades, including midterm grades for progress reports
- We encourage our students to check their grades throughout the nine weeks

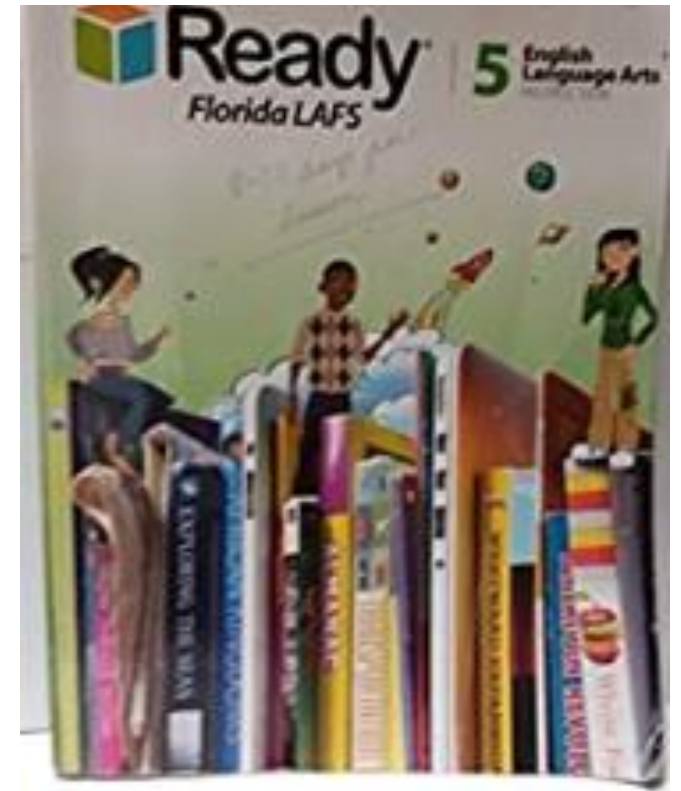
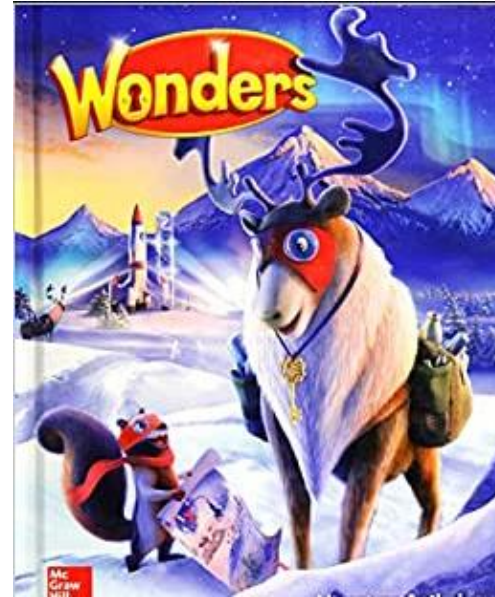
Click the link below to register for FOCUS

Website:

<https://leon.focusschoolsoftware.com/focus/auth/>

5TH GRADE LANGUAGE ARTS

- **Reading series:** *WONDERS* and *Ready Reading*
- Addresses Language Arts Florida Standards (LAFS)
- Comprehensive curriculums that include comprehension, vocabulary, phonics, grammar, fluency, and writing.



Let's be

SUMMARIZE
First Read- Summarize each paragraph with one word.




UNDERLINE
Second Read- Underline the main idea of each paragraph.

READ
Read the question and find text evidence to support your choice.

EELIMINATE
Eliminate unlikely answer choices.



WHY READ 20 MINUTES AT HOME?

Student A Reads	Student B Reads	Student C Reads
❖ 20 minutes per day.	❖ 5 minutes per day.	❖ 1 minute per day
❖ 3,600 minutes per school year.	❖ 900 minutes per school year.	❖ 180 minutes per school year.
❖ 1,800,000 words per year.	❖ 282,000 words per year.	❖ 8,000 words per year.
		
❖ Scores in the 90 th percentile on standardized tests.	❖ Scores in the 50 th percentile on standardized tests.	❖ Scores in the 10 th percentile on standardized tests.

If they start reading for 20 minutes per night in Kindergarten, by the end of 6th grade, Student A will have read for the equivalent of 60 school days, Student B will have read for 12 school days, and Student C will have read for 3.

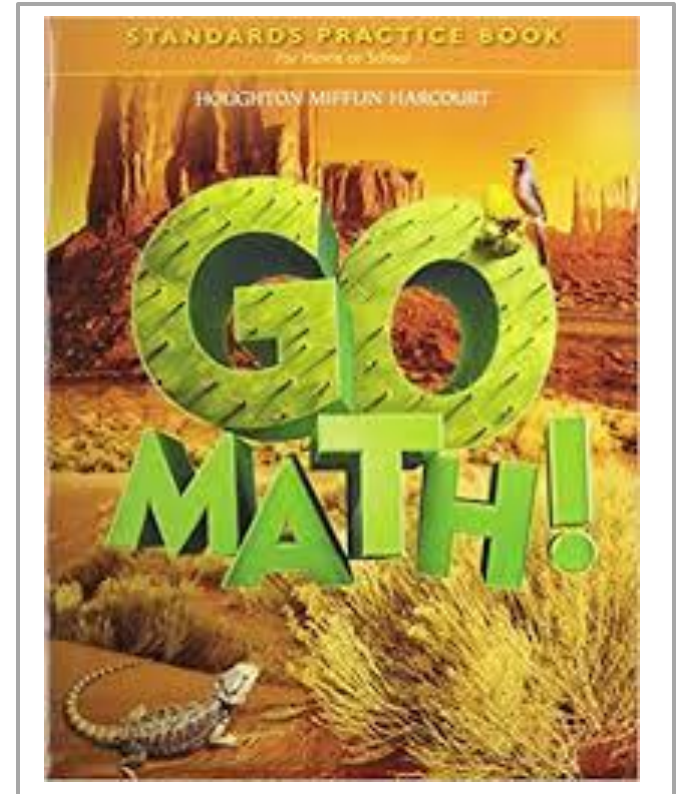
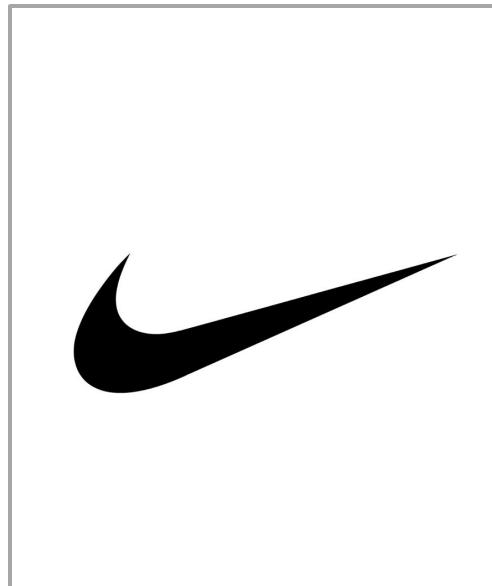
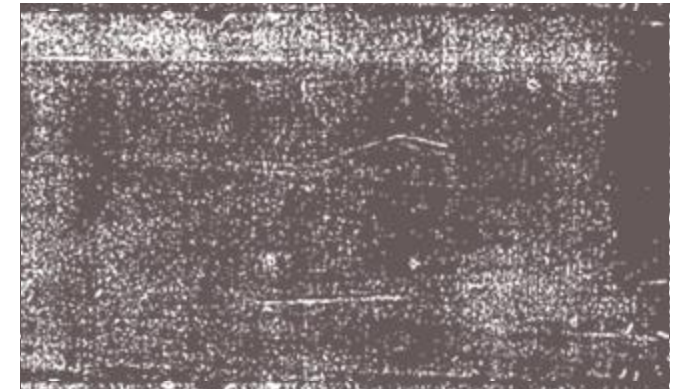
(Kear and Berman, 1987.)

WANT TO BE A BETTER READER? SIMPLY READ.



5TH GRADE MATH

- **Math series:** *Go Math!*
- Addresses Math Florida Standards (MAFS)
- Comprehensive curriculum that uses the 5E instructional model and differentiated instruction across interactive platforms.





ACCESSING CLASSLINK

Go to the Pineview Webpage

<https://www.leonschools.net/pineview>

The screenshot shows a web browser window with the URL [leonschools.net/pineview](https://www.leonschools.net/pineview). A yellow banner at the top contains a message about COVID-19 updates and a link to <https://www.leonschools.net/covid19>. Below this is a dark green navigation bar with a search box, a language selector, and buttons for 'DISTRICT HOME' and 'CHOOSE SCHOOL'. The main header features the Pineview Elementary logo (a tiger's head in a circle) and the school name. To the right of the logo are icons for 'Parent Portal', 'Calendar', 'Employment', 'Contact', 'Listserve', and 'ClassLink'. The 'ClassLink' icon, which is a blue cloud with a white 'C' and a person icon, is circled in red, and a red arrow points to it from the right. Below the header is a white navigation menu with links for 'HOME', 'ABOUT US', 'ADMINISTRATION', 'OUR SCHOOL', 'AFTER SCHOOL', 'STUDENTS', 'PARENTS', and 'DIGITAL ACAD'. The main content area has a large green and yellow sunburst graphic with the text 'WANT TO volunteer? CLICK HERE'. On the right side, there is a 'UPCOMING EVENTS' section with a list of events for August 24, 25, and 26, including 'Teacher Inservice' and 'School Board Meeting'. A 'View Calendar' link is at the bottom of this section.

FOR ONGOING UPDATES, AND DETAILED INFORMATION REGARDING LCS'S RESPONSE AND PLANS REGARDING THE IMPACT OF COVID19 , PLEASE VISIT THE COVID19 SITE.
[HTTPS://WWW.LEONSCHOOLS.NET/COVID19](https://www.leonschools.net/covid19)

POPULAR LINKS ▲ Select Language ▼ Powered by Google Translate Search DISTRICT HOME CHOOSE SCHOOL

Pineview Elementary Parent Portal Calendar Employment Contact Listserve **ClassLink**

HOME ABOUT US ADMINISTRATION OUR SCHOOL AFTER SCHOOL STUDENTS PARENTS DIGITAL ACAD

WANT TO volunteer? CLICK HERE

UPCOMING EVENTS

AUG 24	Teacher Inservice 3:00 PM Cancelled - School Board Agenda Review/Workshop - Cancelled
AUG 25	Teacher Inservice 6:00 PM - 7:00 PM School Board Meeting
AUG 26	Teacher Inservice

[View Calendar](#)

**Students will sign in
by clicking the
'green' login button.**



Welcome to ClassLink

Username:
171#@edu.leonschools.net

➔ Login with Username & Password

Password:
5-digit lunch pin

Sign in with QuickCard

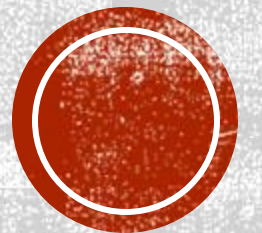
[Help, I forgot my password](#)

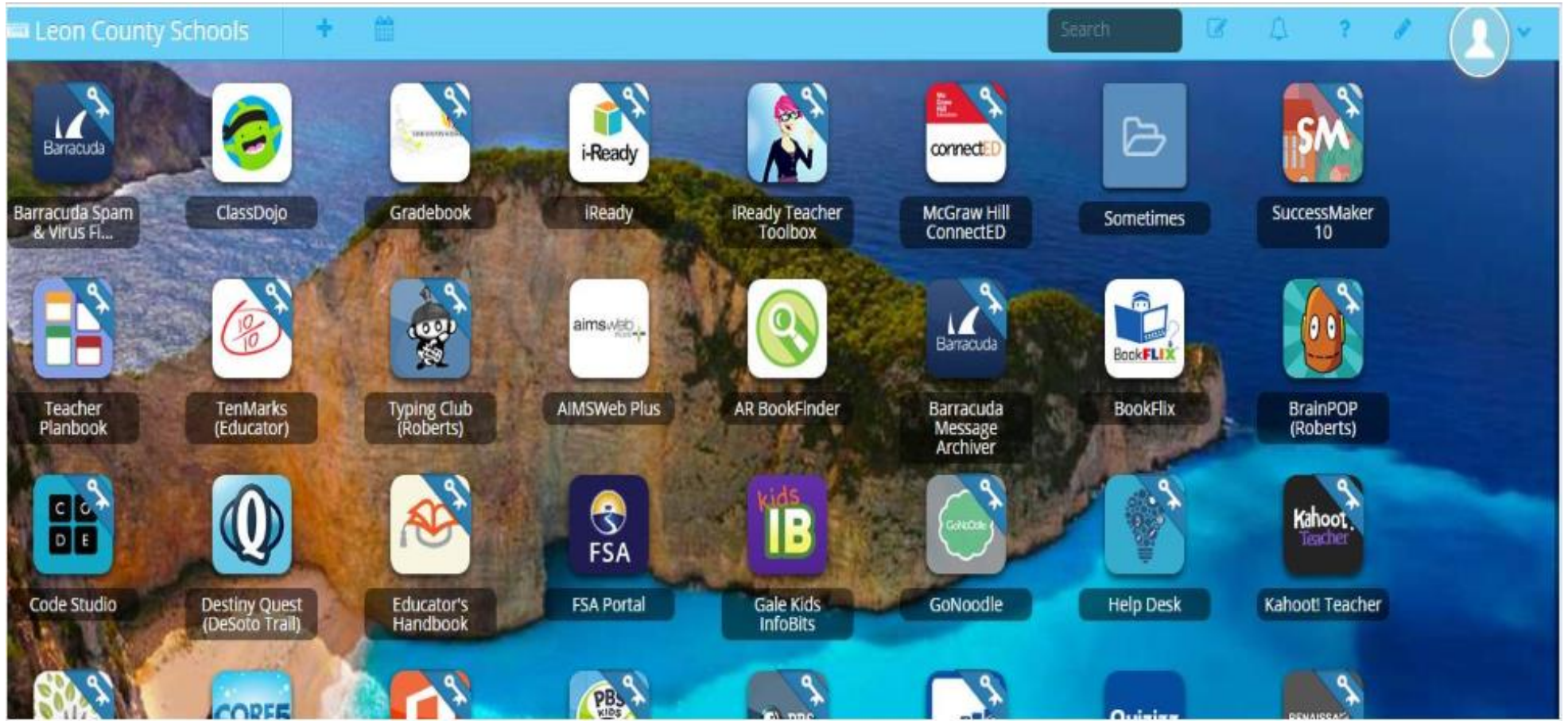
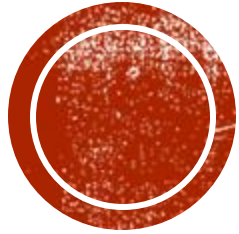


[Help](#) • [Browser Check](#) • [Remote Login](#)
[Privacy](#)



ACCESSING CLASSLINK

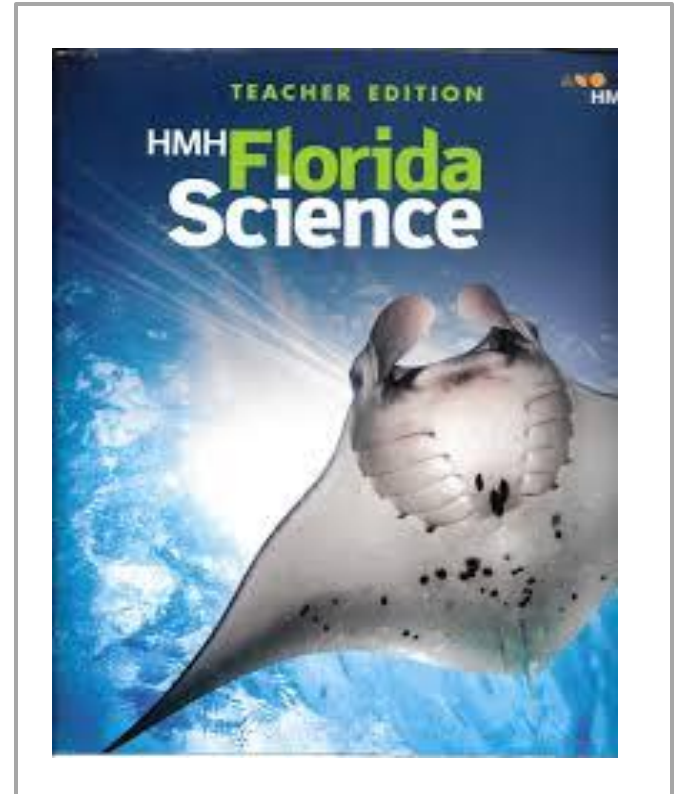
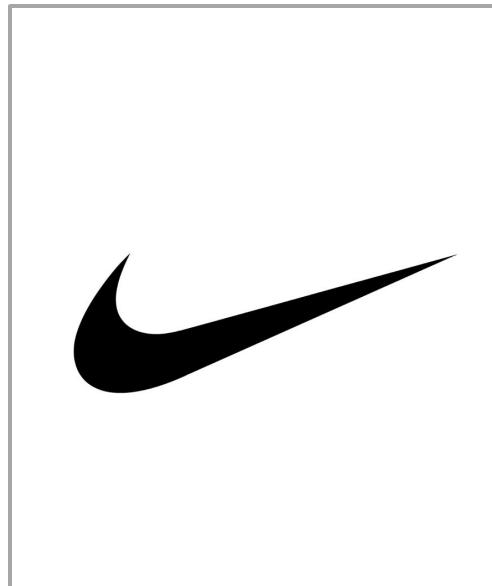
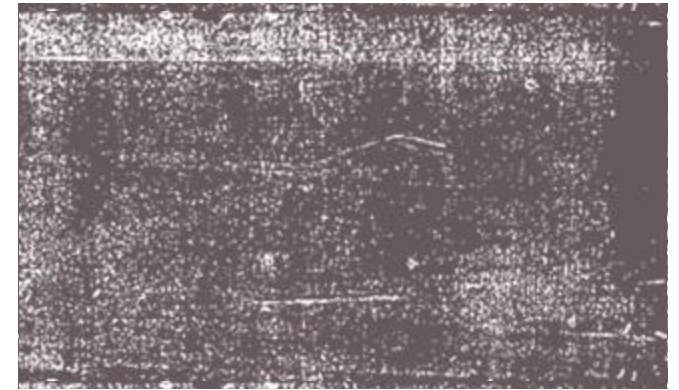




This is an example of what your child's dashboard will look like on Classlink. From this page students can access programs assigned to them like ThinkCentral (math), Wonders (language arts), and iReady.

5TH GRADE SCIENCE

- **Science series:** *HMH Florida Science*
- **Addresses Science Florida Standards (SC)**
 - Comprehensive curriculums that include life science, nature of science, physical science, & earth and space science.



HOW TO CONTACT 5TH GRADE TEACHERS

Ms. Nash	Ms. Mui	Ms Clemons
<p>Email: nasht@leonschools.net</p> <p>Phone: (850)778-1872</p> <p>Pineview Elementary: (850) 488-2819</p>	<p>Email: muym@leonschools.net</p> <p>Phone: (850)778-1289</p> <p>Pineview Elementary: (850) 488-2819</p>	<p>Email: clemonsz@leonschools.net</p> <p>Phone: (850)629-9005</p> <p>Pineview Elementary: (850) 488-2819</p>



Let's Get



to Work Jaguars!!!



Canvas for Parents

Click to add text



TRAINING SERVICES



CANVAS
PARENT