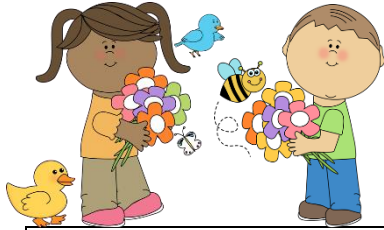


Name: _____



Homework Checklist March



<p>For week of 2/27: *Practice sight words and spelling words daily, spelling check on Friday * Complete Math practice pages from chapter 12: P239-P244 *Read for 15-20 minutes every night (Your child <u>SHOULD</u> be reading to you, bedtime stories count.) *March Family activities (see back)</p>	<p><u>Parent Initials</u></p>
<p>For week of 3/6: *Practice sight words and spelling words daily, spelling check on Friday * Complete Math practice pages from chapter 12: P245-248, test date: Wednesday, 3/8 *Read for 15-20 minutes every night (Your child <u>SHOULD</u> be reading to you, bedtime stories count.) *March Family activities (see back)</p>	<p><u>Parent Initials</u></p>
<p>For week of 3/13:</p> <h2 style="text-align: center;">Spring Break</h2>	<p><u>Parent Initials</u> X</p>
<p>For week of 3/20: No School on Monday, 3/20 – Teacher Planning Day *Practice sight words and spelling words daily, NO Spelling Check on Friday *Complete Math practice pages from chapter 6: P113-P116, <u>Skip lesson 3, pages P117-P118</u> *Read for 15-20 minutes every night (Your child <u>SHOULD</u> be reading to you, bedtime stories count.) *March Family activities (see back)</p>	<p><u>Parent Initials</u></p>
<p>For week of 3/27: *Practice sight words and spelling words daily, spelling check on Friday *Complete Math practice pages from chapter 6: complete pages P119-P126 *Read for 15-20 minutes every night (Your child <u>SHOULD</u> be reading to you, bedtime stories count.) *March Family activities (see back)</p>	<p><u>Parent Initials</u></p>

*The math practice book pages do **NOT** need to be returned to school. Families, please initial once in each box to show your child completed the work and send **this** checklist back to school in the blue folder on **March 31st**. **Each day the HW sheet is late, 5 points will be taken off the final grade.***