

# Test Corrections

DUE: \_\_\_\_\_

Name: \_\_\_\_\_

Period: \_\_\_\_\_ Today's Date \_\_\_\_\_

Title of Test: **Geologic time Test**

Test Form: A or B

Original Score on test \_\_\_\_\_

## Teacher Use ONLY!!!

Accepted?            Yes            No

New Score: \_\_\_\_\_

Comments:

**REFLECTION:** (Answer each question in order to receive credit. Be specific and use complete sentences.)

1. How did you study for this test?
2. Did you study to the best of your ability? Why or why not?
3. How could you study differently?

**Directions:** Fill out this form **COMPLETELY** and **ACCURATELY!** You must include each question you missed on the test to receive credit. When completed, staple original test BEHIND to this form. Use additional sheets if necessary.

# Start on Page 2

## Multiple Choice / Matching and True or False Questions:

Question #	Your Answer	Justification Why you chose the answer you did- <b><u>BE SPECIFIC</u></b>	CORRECT ANSWER	Text Evidence that supports the correct answer.
5	B	I confused the definition of <u>climate</u> with the definition of <u>weather</u>	C	<u>Climate</u> - is the way an area feels over a long period of time. <u>Weather</u> - is how a place feels at that time. For example Florida has a warm climate. The weather is cold today.

## Multiple Choice / Matching and True or False Questions:

<b>Question #</b>	<b>Your Answer</b>	<b>Justification Why you chose the answer you did- <u>BE SPECIFIC</u></b>	<b>CORRECT ANSWER</b>	<b>Text Evidence that supports the correct answer.</b>

**Multiple Choice / Matching and True or False Questions:**

<b>5</b>	<b>B</b>	<b>I confused the definition of <u>climate</u> with the definition of <u>weather</u></b>	<b>C</b>	<b><u>Climate</u></b> - is the way an area feels over a long period of time. <b><u>Weather</u></b> - is how a place feels at that time. For example Florida has a warm climate. The weather is cold today.

**Short Answer Question:**

**Answer the question below if you missed # 5 on your test**

**Define Index Fossil:** \_\_\_\_\_  
\_\_\_\_\_  
\_\_\_\_\_

**List the characteristics of an index fossil:**

- A. \_\_\_\_\_
- B. \_\_\_\_\_
- C. \_\_\_\_\_
- D. \_\_\_\_\_

**Models and Figures.** COMPLETE THIS SECTION IF YOU MISSED EVEN ONE ANSWER FOR #'S 17 OR 18 ON THE TEST. For each model or figure fill in completely. Be sure to define the words as listed.

**DEFINE THE FOLLOWING:**

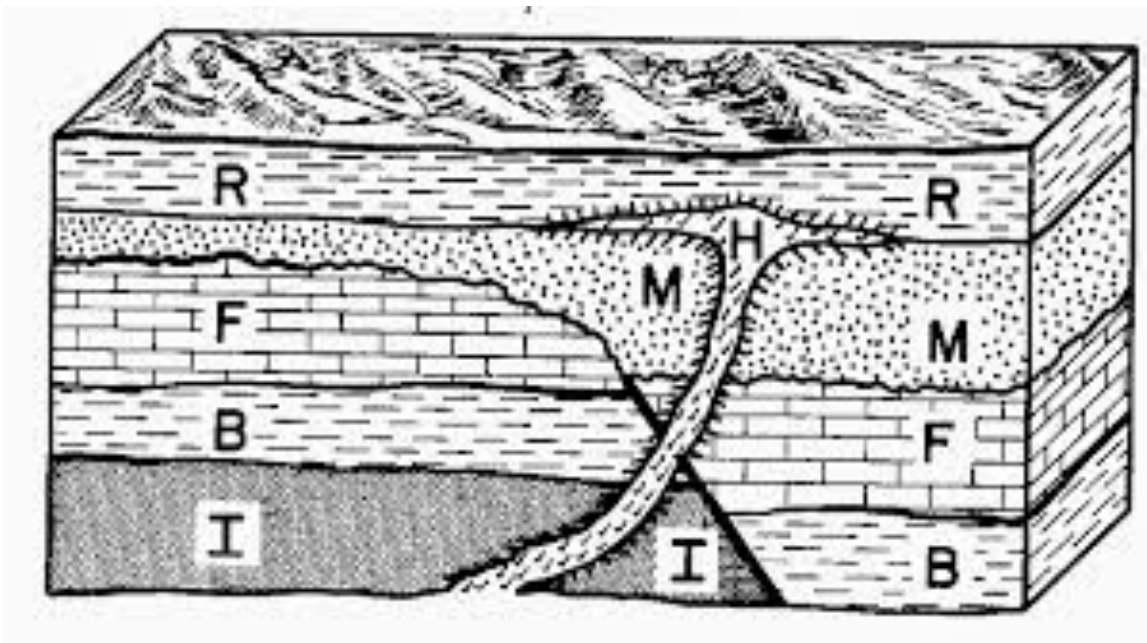
A. RELATIVE DATING:

B. PRINCIPAL/ LAW OF SUPERPOSITION:

C. PRINCIPAL/LAW OF ORIGINAL HORIZONTALITY:

D. PRINCIPAL/LAW OF CROSS CUTTING RELATIONSHIPS:

USE THE FIGURE BELOW TO ANSWER THE QUESTIONS THAT FOLLOW.



A. List the layers from YOUNGEST to OLDEST

\_\_\_\_\_ , \_\_\_\_\_ , \_\_\_\_\_ , \_\_\_\_\_ , \_\_\_\_\_ , \_\_\_\_\_

B. Which layer is the oldest? \_\_\_\_\_

C. Which layer is the youngest? \_\_\_\_\_

D. Between layers I, B, and F- Which layer is the youngest? \_\_\_\_\_

E. What principal did you use to determine this answer to B?  
\_\_\_\_\_

F. Between layers I, B, F, and H- which layer is the youngest? \_\_\_\_\_

G. What principal did you use to determine the answer to D?  
\_\_\_\_\_