

Sum It Up »

Fill in the blanks in the following sentences.

1. All living things are called (a) _____ .
An (b) _____ is a body part that does a certain job in the body.
Several of these parts work together to make up an (c) _____ .

Read the summary statements. Match each statement with the correct image.

2. The brain, spinal cord, and nerves form the nervous system. The nervous system senses the environment, sends information to the brain, processes information, and sends instructions to the body.

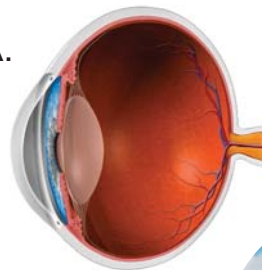
3. The eyes, ears, nose, and tongue are sense organs. They have special parts that sense the environment.

4. Skin, hair, and nails are part of the human integumentary system. It protects internal organs, helps maintain body temperature, and provides waterproofing.

5. Plants and animals have specialized organs for sensing the environment, like compound eyes, antennae, and trigger hairs.

6. Plants and animals have special body coverings such as bark, fur, feathers, quills, scales, and shells.

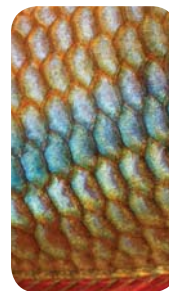
A.



B.



C.



D.



E.





Name _____

Vocabulary Review

1 Unscramble the words on the right to fill in the blanks in each sentence.

1. The _ _ _ _ _ system sends messages throughout your body.	s r n u o e v
2. The _ _ _ _ _ system protects the body's organs.	n e n i g e m t t a y r u
3. An _ _ _ _ _ is a living thing. It is made up of parts that work together.	s n g m a r o i
4. The _ _ _ _ _ is the largest organ in the body. It covers and protects the other organs.	i n k s
5. The _ _ _ _ _ receives messages from the body, processes the information, and sends instructions to the body.	r b i n a
6. An _ _ _ _ _ system is a group of organs that work together to do a job.	o g n r a
7. _ _ _ _ _ are used by moths to "smell" the world around them.	e t n n n e a a
8. The _ _ _ _ _ include sight, taste, smell, hearing, and touch.	s s s e e n

Bonus: How many body parts can you think of that have only three letters?

_____	_____	_____
_____	_____	_____
_____	_____	_____
_____	_____	_____

Apply Concepts

2 Some areas of the body have more sensory structures than others. Which do you think would have more? For each pair of body parts, circle the one you think would have more sensory structures. Then state your reason.



Why? _____



Why? _____



3 Draw a line to connect the animal to the description of its senses.



Have "noses" on their antennae to "smell" the air



Has compound eyes on moveable eyestalks



Uses an echo system to find objects in water

4 How are the senses of taste and smell alike?

5 Which of the following structures is used to sense touch?

- a. eyestalk
- b. antenna
- c. trigger hair
- d. compound eye

Take It Home!

See *ScienceSaurus*® for more information about living things.