

Sum It Up >>

Complete the outline below to summarize the lesson.

- I. Climate
 - A. 1. _____
 2. different amounts of precipitation
 3. found in middle latitudes
 - B. determined by the long-term average precipitation and temperature
 - C. Polar
 1. usually little precipitation
 2. 4. _____
 3. found in high latitudes
- II. Main climate zones
 - A. 2. _____
 1. warm year-round
 2. can be wet or dry
 3. found near the equator
 - B. Temperate
 1. 3. _____
- III. 5. _____
 - A. bodies of water
 - B. landforms
 - C. elevation
 - D. distance from the equator

Fill in the missing words to tell how scientists determine the climate of a place.

Climate is different from 6. _____, which describes what the atmosphere is like at a given time and place. Scientists find the climate of a place by averaging weather conditions over a 7. _____ period of time. They study an area's temperature, wind speed, wind direction, cloud cover, air pressure, and amount of 8. _____.

They find the 9. _____ of these conditions for each month of the year. They look at 10. _____ years or more of data to find the climate of a place.



Name _____

Vocabulary Review

1 Use the clues to unscramble the words in the box. Use the word bank if you need help.

1. qareout : the imaginary line that divides Earth into the northern and southern hemispheres, or halves	
2. ertmpeate emlciat : has moderate temperatures	
3. taliecm noze : an area with the same kind of climate conditions	
4. dutlatei : distance of a place from the equator	
5. lopricta itleamc : is warm year-round	
6. rewaeth : state of the atmosphere at a certain time and place	
7. ropal atmlcie : is cold year-round	
8. catmile : long-term weather patterns of a place	

latitude*
climate*

temperate climate
equator*

climate zone*
tropical climate

polar climate
weather

*Key Lesson Vocabulary

Apply Concepts

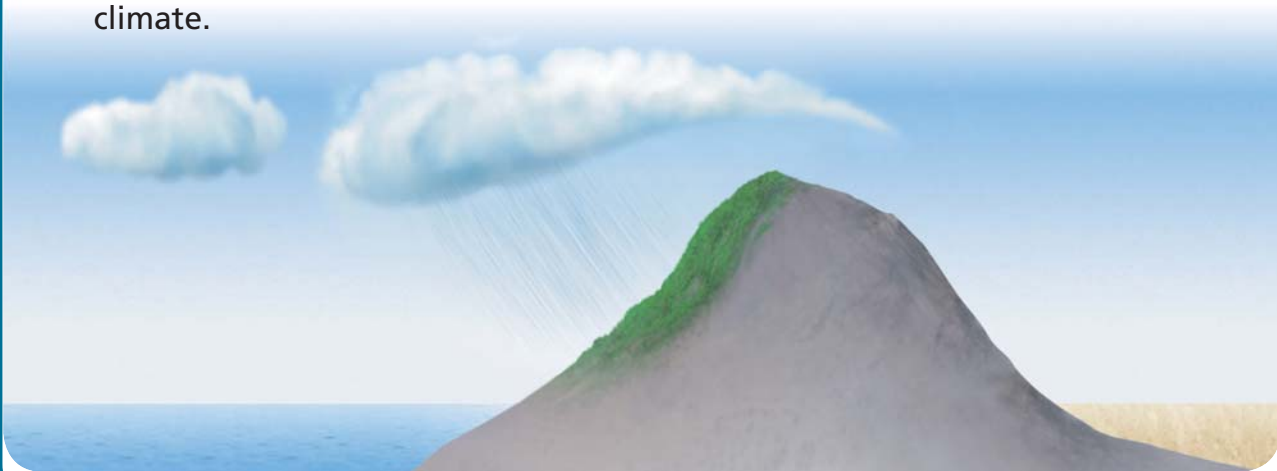
- 2** The pictures below show different kinds of clothing to wear in the fall. In which climate zone would you wear each piece of clothing? Write your answers on the lines under the pictures.



- 3** Correctly label each statement below with a C if it refers to climate and a W if it refers to weather.

- a. In Antarctica, the average yearly temperature is below freezing. ____
- b. Cherrapunji, India, may be the rainiest place on Earth. ____
- c. It hasn't rained for two weeks in Macon, Georgia. ____
- d. Today's air temperature was the highest this week. ____

- 4** In the picture below, add arrows to show how air moves to form a rain shadow. Add labels showing where you would find a dry climate and a wet climate.



5 Label the climate zones in the map below.

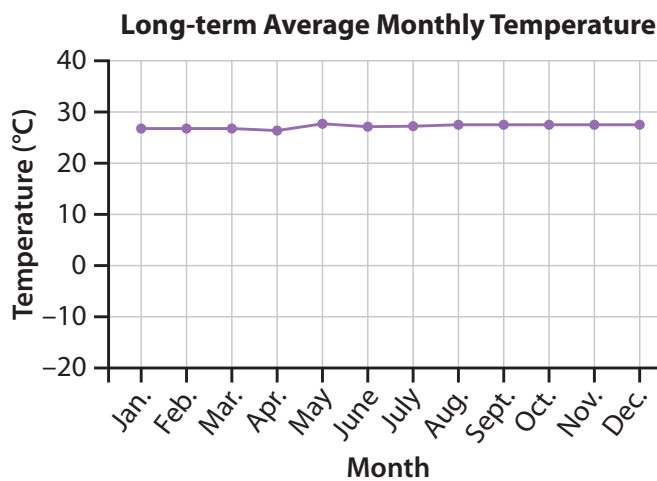
A _____



B _____

C _____

6 The graph below shows the long-term average monthly temperature of a place. In which climate zone is this place likely to be found? Explain.



7 Suppose the climate of a rain forest changes. Its temperature is now always near or below freezing, but its precipitation remains high. Draw and describe what this place would look like after a few years.

8 The picture shows a landform. Label where the climate will be the coolest and where it will be the warmest on the landform.



Take It Home!

Share what you have learned about climate with your family. Find out about the kinds of homes people build in different climates. Work with a family member to make a model of a home in a different climate.