

# What Are Organs and Body Systems?

**1** Compare the human body to an oak tree. A human's skin is **most** like which part of an oak tree?

- (A) acorn
- (B) bark
- (C) leaf
- (D) root

**2** The sense of hearing depends on which specialized cells?

- (F) hair cells
- (G) taste buds
- (H) rods and cones
- (I) chemoreceptors

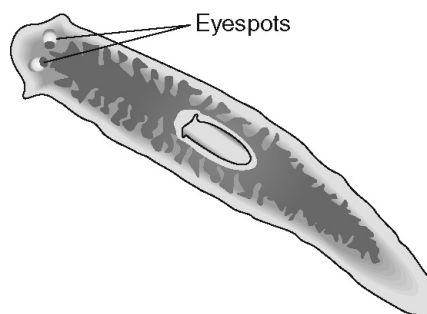
**3** Rasheed accidentally bumped his leg on a desk. What is the **first** thing that happened within Rasheed's nervous system?

- (A) He yelled, "Ow!"
- (B) The nerves in his leg sensed pain.
- (C) The leg nerves sent a message to the brain.
- (D) The brain sent a message to the integumentary system.

**4** The waxy leaves on some trees help keep water inside the leaves. Which body part performs a similar function?

- (F) ears
- (G) eyes
- (H) tongue
- (I) skin

**5** Look at the picture of a planarian below.



Which is **most likely** the function of the labeled structure?

- (A) sense light
- (B) sense touch
- (C) sense sound
- (D) sense chemicals