



**ADDENDUM No. 1 TO ORIGINAL INVITATION TO BID**

**Date: April 18, 2017**

**Bid No.: 5462-2017 James S. Rickards High School Auditorium Theatrical Controls Replacement**

**Bid Opening: April 25, 2017 @ 2:00 P.M. EST** *(Addendum does not change the opening date of the bid)*

*This addendum is being issued to make the following changes, corrections, clarifications and additions to the bidding document. The information in this addendum modifies and changes the original bidding document and takes precedence over the original document. Receipt of this addendum shall be acknowledged by the bidder signing and dating below and submitting this document with your bid proposal form. Failure to acknowledge this addendum may preclude consideration of the bid proposal for award.*

---

**Drawing clarifications by project engineer. See attached ten (10) pages.**

**TO QUALIFY YOUR BID, OF WHICH THIS ADDENDUM BECOMES A PART,  
RECEIPT OF ADDENDUM MUST BE ACKNOWLEDGED AND RETURNED WITH YOUR BID.**

---

VENDOR NAME

VENDOR ADDRESS

---

NAME

TITLE

---

SIGNATURE

**Leon County Schools  
Rickards High School  
Building 20 Auditorium Theatrical Lighting Controls Replacement**

LCS Project 33007

Addendum One  
4/17/2017

This addendum consists of ten (10) pages.

Incorporate into the Construction Contract the following:

1. DRAWING E2.1 – ELECTRICAL AUDITORIUM DEMOLITION PLAN

Add SK-1/E2.1, SK-2/E2.1 – Refer to attached sketches. Contractor to remove and dispose of existing dimming console and dimming cabinet. This equipment shall be disposed of offsite and at an appropriate electronics handling facility.

2. DRAWING E3.1 – ELECTRICAL AUDITORIUM NEW WORK PLAN

Add SK-3/E3.1, – Provide 120 volt circuit to Owner furnished motorized door operator.

Add SK-3/E3.1, SK-4/E3.1, SK-5/E3.1, SK-6/E3.1 – Delete preset control stations with slide dimmer capability. All preset stations to be 4 button type. Control cables to preset stations shall be Belden #8471. Refer to attached sketch showing revised Scope of Work notes. DMX outlets located adjacent to gridiron junction boxes shall be single, output types for DMX cable connection to connector strips. Note this cable connection (jumper) is custom length and lashed to power cable. Contractor to field verify lengths.

3. DRAWING E4.1 – ELECTRICAL AUDITORIUM STAGE LIGHTING SYSTEM  
DETAILS

Add SK-7/E4.1, SK-8/E4.1, SK-9/E4.1 – Provide factory, wall mountable enclosure for DMX splitter assembly. Delete preset control stations with slide dimmer capability. All preset stations to be 4 button type. Control cables to preset stations shall be Belden #8471.

Clarification: Source 4 lighting instruments shall be Source 4 Series 1. Provide all specified and necessary accessories to meet the requirements.

end

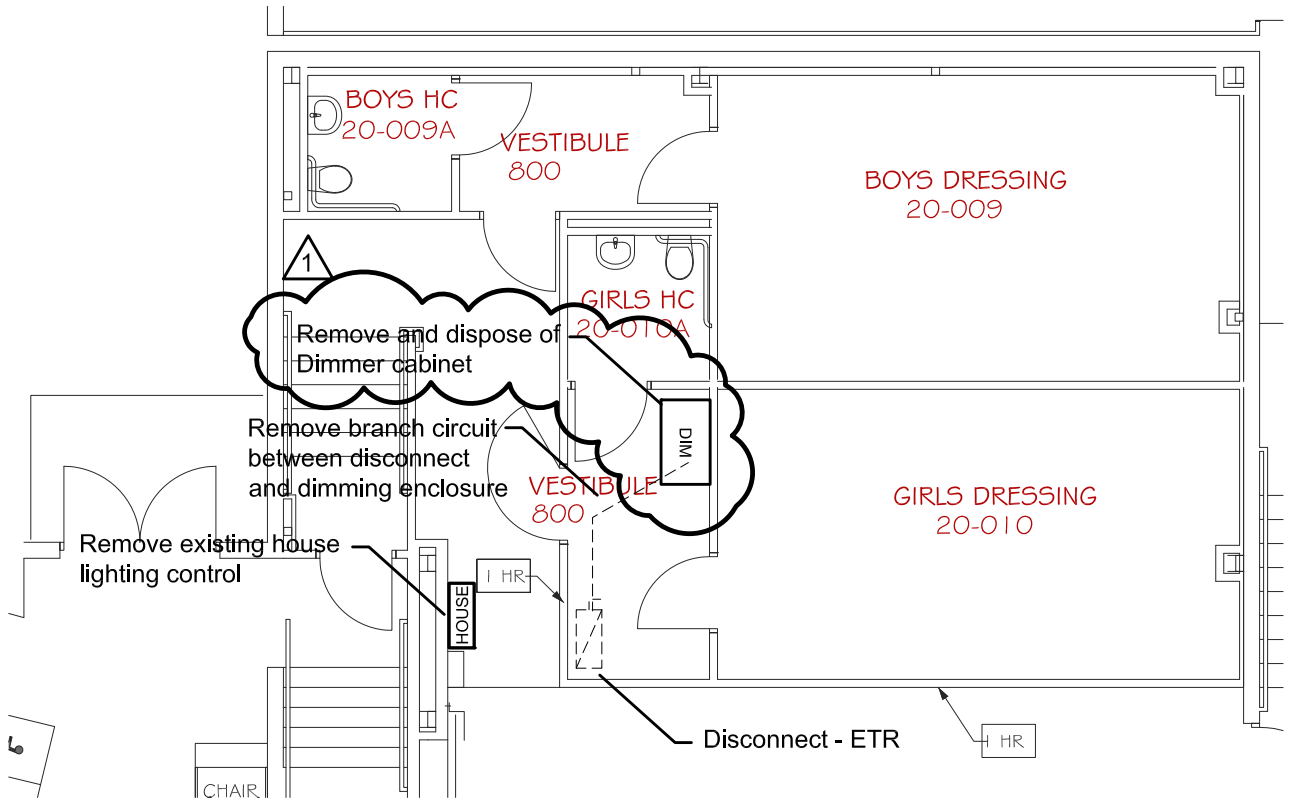
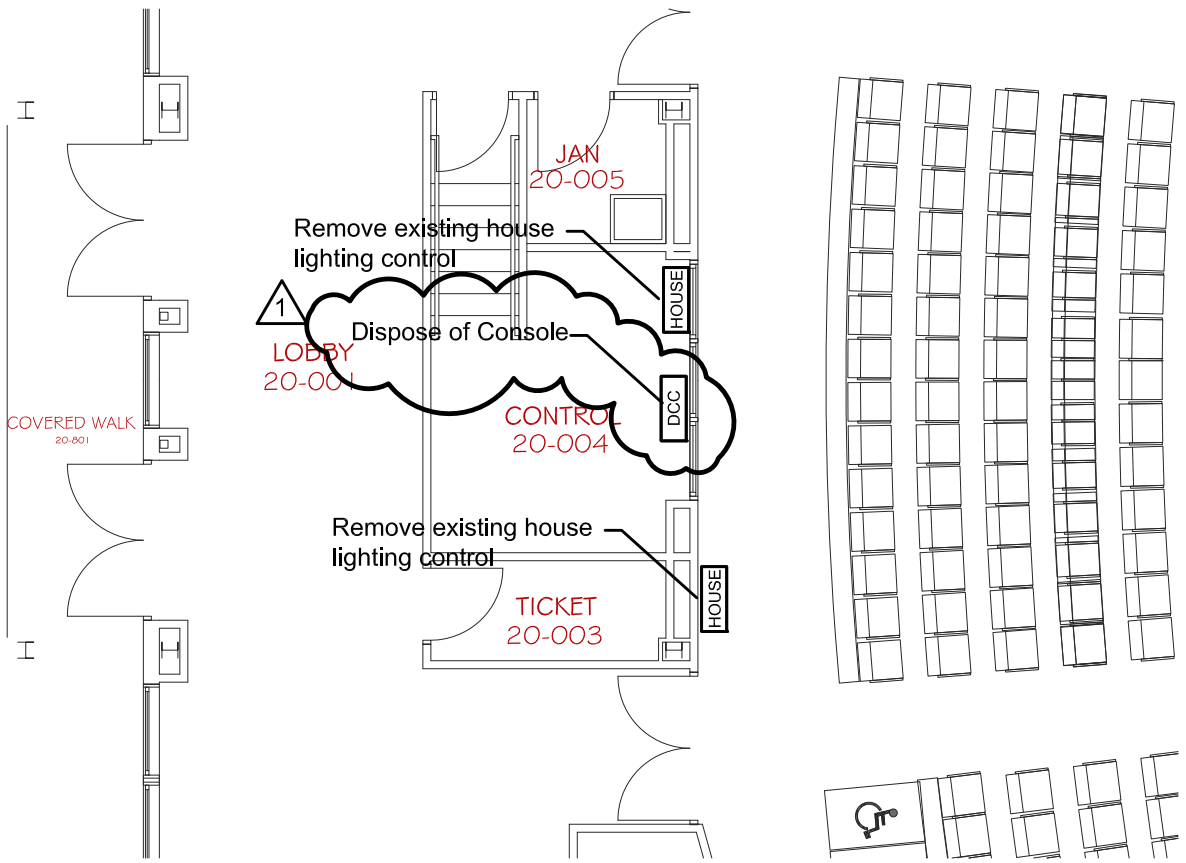
## SHEET NOTES

1

1. Materials to be turned over to the Owner or disposed of in accordance with general notes.
2. Remove all control cables.
3. Oversize backboxes (for multi slider controls) may be reused for pushbutton control stations. Provide finished coverplate, painted black, with suitable openings for new stations.
4. Work on energized equipment is not allowed under any circumstances.

PROJECT No. 2016-40

DESIGNED BY <u>CKF</u> DRAWN BY <u>TEB</u>  CHECKED BY <u>CKF</u> APPROVED BY <u>CKF</u> DATE <u>04/17/2017</u>	<b>ELECTRICAL          STAGE LIGHTING REPLACEMENT          EQUIPMENT PLAN</b>  <b>RICKARDS HIGH SCHOOL          BUILDING 20          TALLAHASSEE, FLORIDA</b>	ADDENDUM 1  SKETCH No. <u>SK-1/E2.1</u>  <hr/> <b>McGinniss &amp; Fleming          Engineering, Inc.</b> <hr/> <i>Mechanical · Electrical · Fire Protection · Plumbing</i>
--	---	---



PROJECT No. 2016-40

DESIGNED BY CKF  
 DRAWN BY TEB  
 CHECKED BY CKF  
 APPROVED BY CKF  
 DATE 04/17/2017

ELECTRICAL  
 STAGE LIGHTING REPLACEMENT  
 EQUIPMENT PLAN

RICKARDS HIGH SCHOOL  
 BUILDING 20  
 TALLAHASSEE, FLORIDA

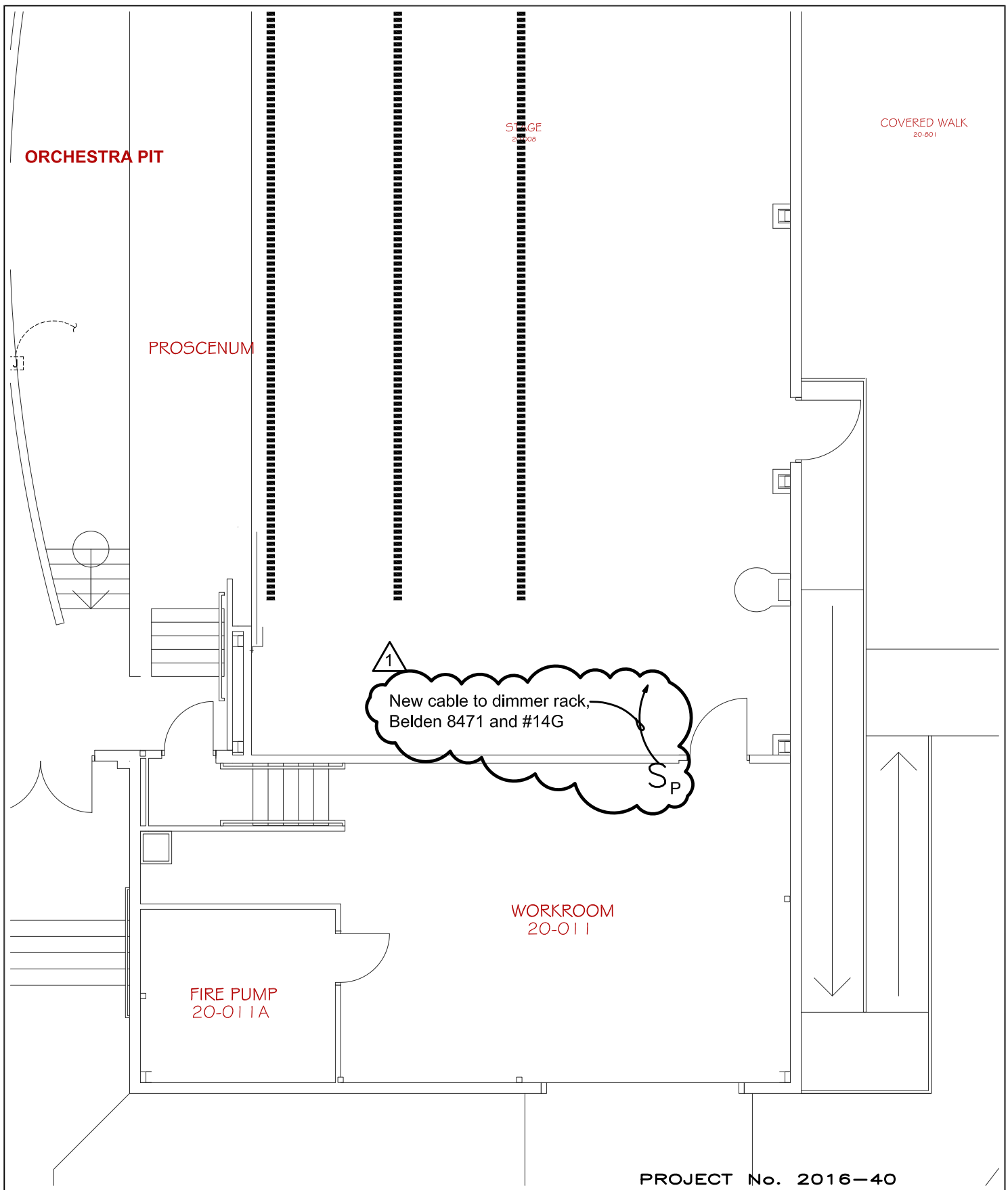
ADDENDUM 1

SKETCH No. SK-2/E2.1

McGinniss & Fleming  
 Engineering, Inc.

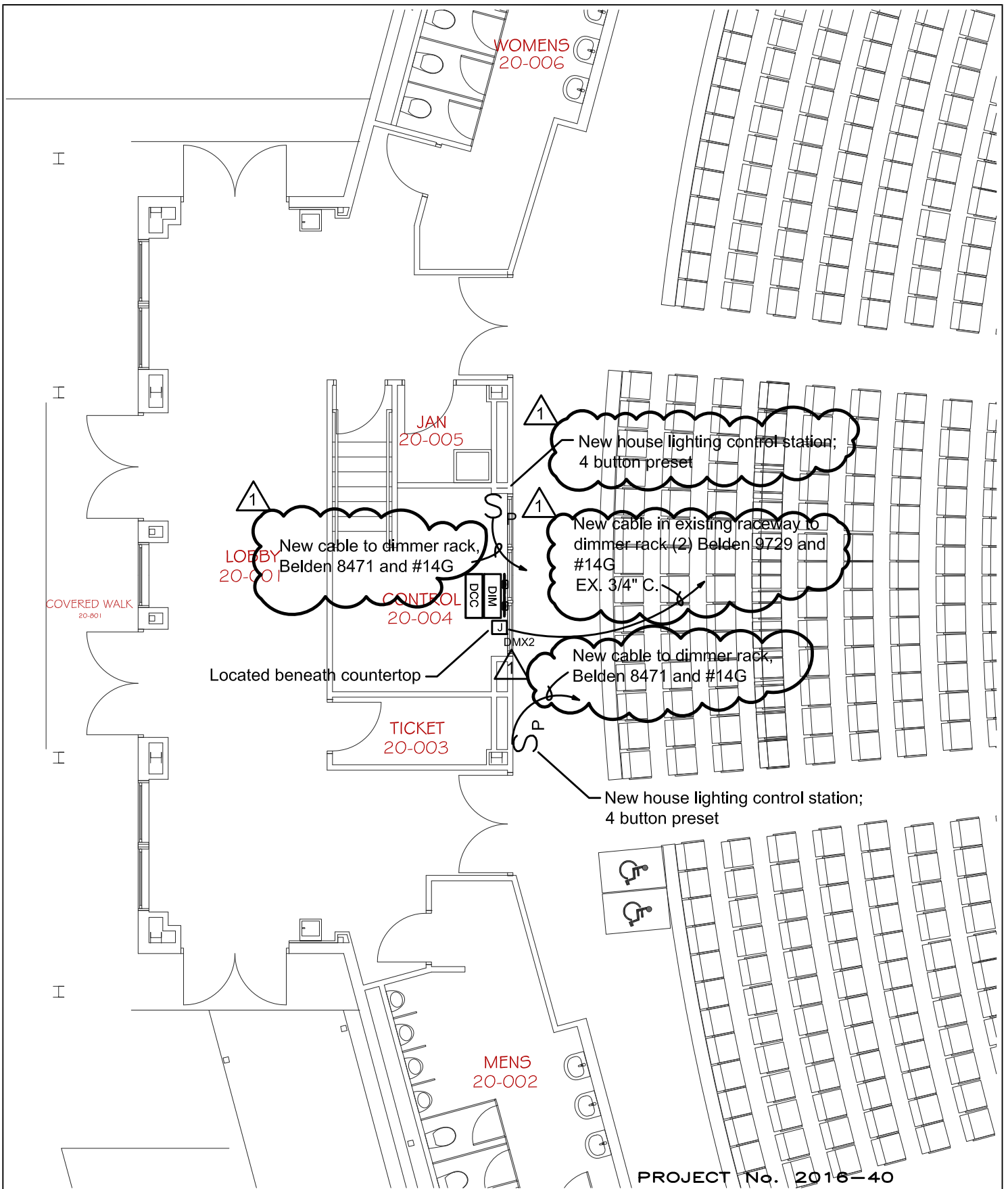
Mechanical · Electrical · Fire Protection · Plumbing





PROJECT No. 2016-40

DESIGNED BY <u>CKF</u> DRAWN BY <u>TEB</u> CHECKED BY <u>CKF</u> APPROVED BY <u>CKF</u> DATE <u>04/17/2017</u>	ELECTRICAL STAGE LIGHTING REPLACEMENT EQUIPMENT PLAN  RICKARDS HIGH SCHOOL BUILDING 20 TALLAHASSEE, FLORIDA	ADDENDUM 1
		SKETCH No. <u>SK-4/E3.1</u>  McGinniss & Fleming Engineering, Inc.  <i>Mechanical • Electrical • Fire Protection • Plumbing</i>



PROJECT No. 2016-40

<p>DESIGNED BY <u>CKF</u>          DRAWN BY <u>TEB</u>          CHECKED BY <u>CKF</u>          APPROVED BY <u>CKF</u>          DATE <u>04/17/2017</u></p>	<p style="text-align: center;"><b>ELECTRICAL          STAGE LIGHTING REPLACEMENT          EQUIPMENT PLAN</b></p> <p style="text-align: center;">RICKARDS HIGH SCHOOL          BUILDING 20          TALLAHASSEE, FLORIDA</p>	<p>ADDENDUM 1</p> <p>SKETCH No. <u>SK-5/E3.1</u></p> <p>McGinniss &amp; Fleming          Engineering, Inc.</p> <p><i>Mechanical • Electrical • Fire Protection • Plumbing</i></p>
---	---	---

# SHEET NOTES

1. Refer to line diagram for all wiring and cable requirements. Provide the materials specified or equivalent with ETC Lighting Inc written approval.

2. Replace service feeder between distribution circuit breaker and dimming cabinet complete.

1

3. Three scene pre-programmed control station shall be programmed for assembly or general use. Furnish and install the four (4) new control stations in the locations shown to provide 4-button preset controls to house lighting. Channels shall be selected by Owner.

5. All control cables shall be new. Coordinate with system provider for quantities and types and contract responsibility.

6. SESCO/ETC shall provide system check and programming/presets and their price shall be included in the Contractor's basic price.

7. Contractor/ETC shall include effort to program all presets in accordance with RHS Staff wishes.

8. Provide painted trims and covers for a first rate installation where larger control stations are replaced with small; back boxes may be reused.

9. Label all cables in the main DMX junction box or dimming rack as appropriate.

10. Provide new supervised relay to activate existing house lighting emergency transfer system automatically upon fire evacuation alarm.

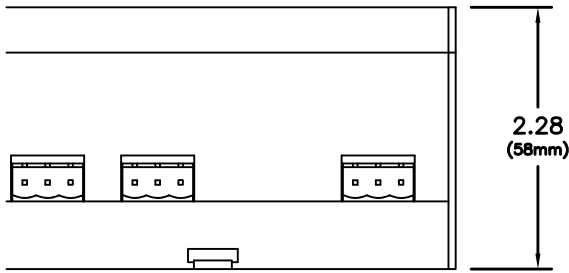
11. Provide new labels, warnings, touchup painting, etc as required for a true "refurbished" system.

PROJECT No. 2016-40

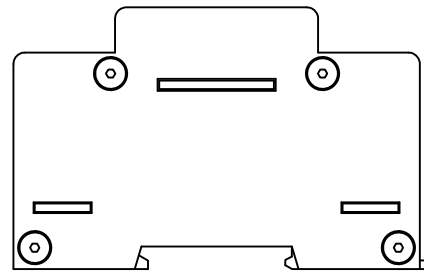
DESIGNED BY <u>CKF</u> DRAWN BY <u>TEB</u> CHECKED BY <u>CKF</u> APPROVED BY <u>CKF</u> DATE <u>04/17/2017</u>	<b>ELECTRICAL          STAGE LIGHTING REPLACEMENT          EQUIPMENT PLAN</b>	ADDENDUM 1  SKETCH No. <u>SK-6/E3.1</u>
	<b>RICKARDS HIGH SCHOOL          BUILDING 20          TALLAHASSEE, FLORIDA</b>	<hr/> <b>McGinniss &amp; Fleming          Engineering, Inc.</b> <hr/> <small>Mechanical • Electrical • Fire Protection • Plumbing</small>



BOTTOM VIEW



SIDE VIEW

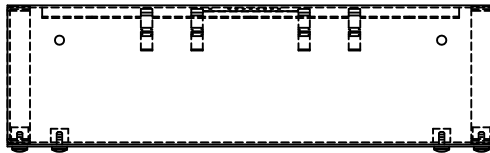


DMX CONTROL SPLITTER ASSEMBLY DETAIL DMX

NOT TO SCALE

1

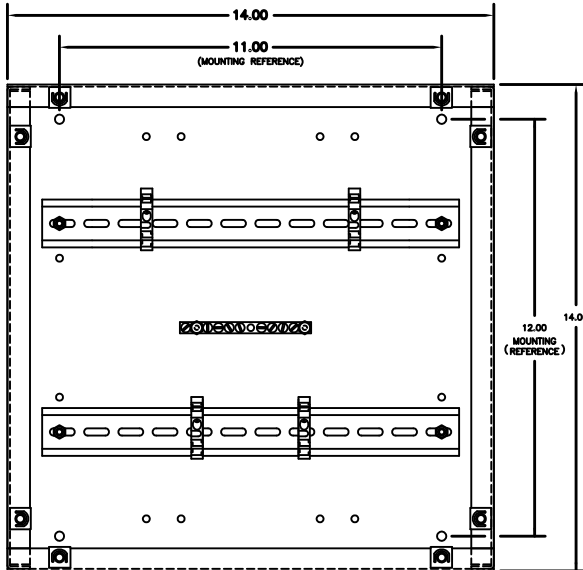
TOP VIEW  
(MOUNTING BRACKETS REMOVED)



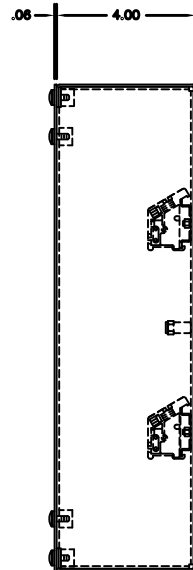
NOTES:

- 1.) MOSAIC INSTALLATION BOX IS LISTED.
- 2.) MOSAIC INSTALLATION BOX SHELL AND COVER PANEL ARE 16 GA. STEEL. END CAPS ARE 14 GA. STEEL. ALL ARE FINISHED IN A BLACK FINE-TEXTURED POWDER COAT.

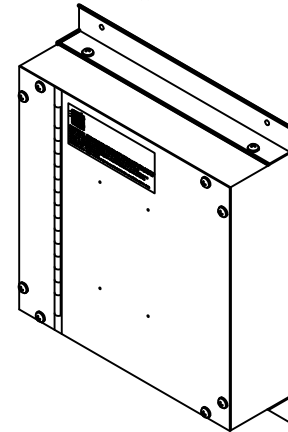
FRONT VIEW  
(COVER PANEL REMOVED)



SIDE VIEW  
(MOUNTING BRACKETS REMOVED)



ISOMETRIC VIEW  
(1/2 SCALE)



CABINET

PROJECT No. 2016-40

DESIGNED BY CKF  
 DRAWN BY TEB  
 CHECKED BY CKF  
 APPROVED BY CKF  
 DATE 04/17/2017

ELECTRICAL  
 STAGE LIGHTING REPLACEMENT  
 EQUIPMENT PLAN

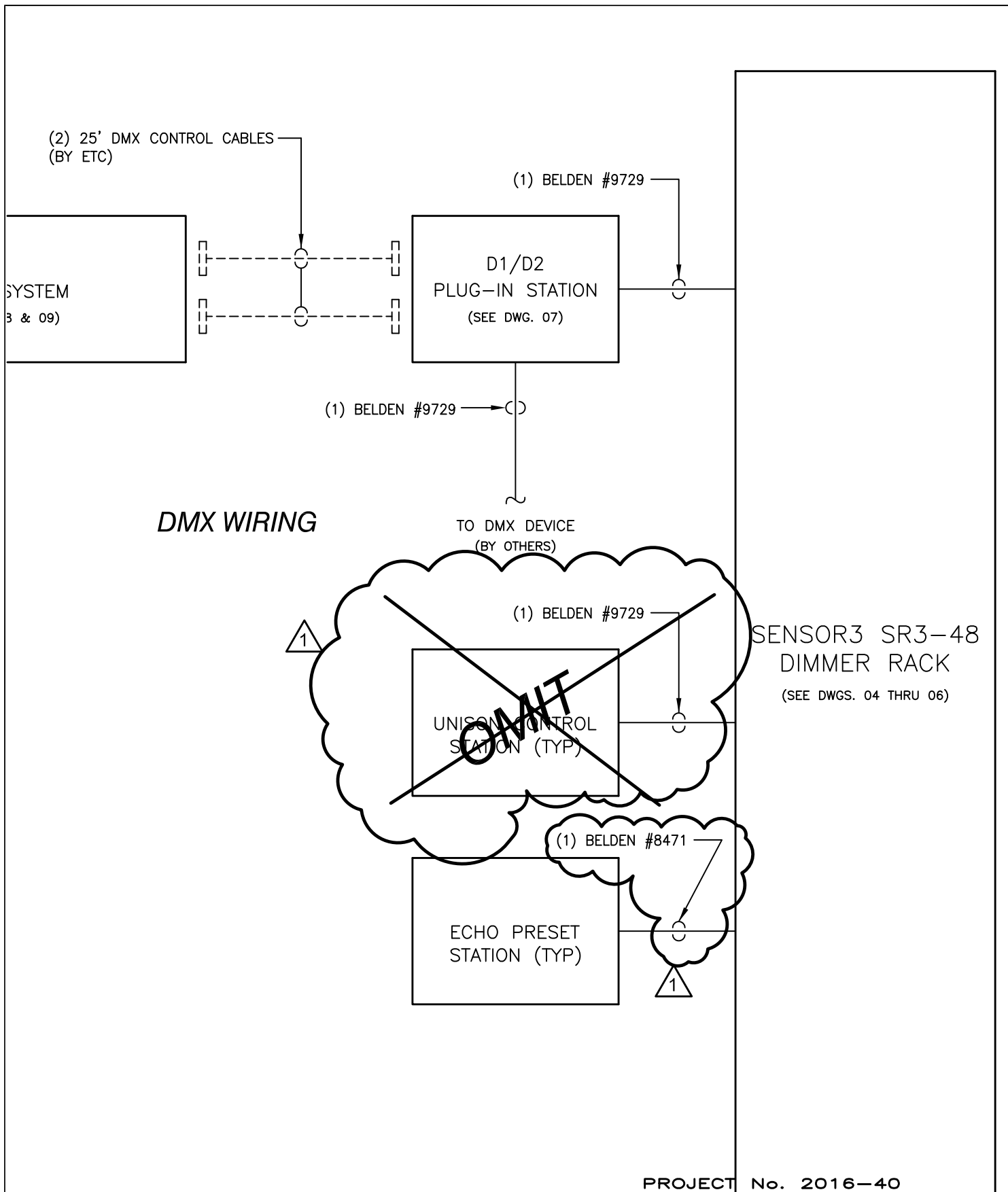
RICKARDS HIGH SCHOOL  
 BUILDING 20  
 TALLAHASSEE, FLORIDA

ADDENDUM 1

SKETCH No. SK-7/E4.1

McGinniss & Fleming  
 Engineering, Inc.

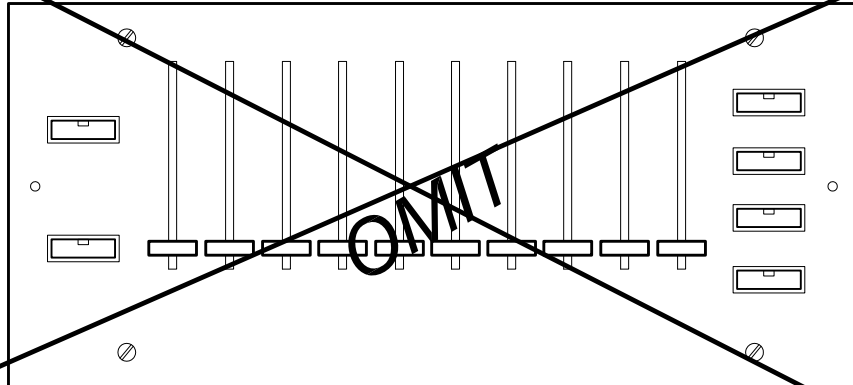
Mechanical • Electrical • Fire Protection • Plumbing



DESIGNED BY <u>CKF</u> DRAWN BY <u>TEB</u> CHECKED BY <u>CKF</u> APPROVED BY <u>CKF</u> DATE <u>04/17/2017</u>	ELECTRICAL STAGE LIGHTING REPLACEMENT EQUIPMENT PLAN	ADDENDUM 1
	RICKARDS HIGH SCHOOL BUILDING 20 TALLAHASSEE, FLORIDA	SKETCH No. <u>SK-8/E4.1</u> <hr/> McGinniss & Fleming Engineering, Inc. <hr/> <i>Mechanical · Electrical · Fire Protection · Plumbing</i>

1

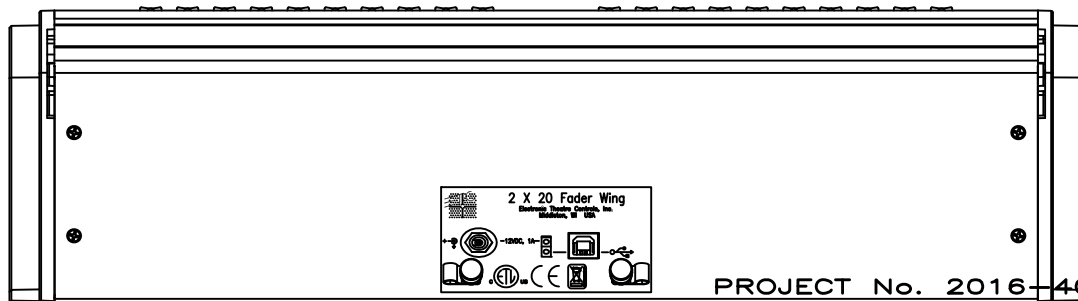
UNISON CONTROL  
STATION UH51007



SF

ALL CONTROLS

REAR VIEW



PROJECT No. 2016-40

DESIGNED BY <u>CKF</u> DRAWN BY <u>TEB</u>  CHECKED BY <u>CKF</u> APPROVED BY <u>CKF</u> DATE <u>04/17/2017</u>	ELECTRICAL STAGE LIGHTING REPLACEMENT EQUIPMENT PLAN	ADDENDUM 1
	RICKARDS HIGH SCHOOL BUILDING 20 TALLAHASSEE, FLORIDA	SKETCH No. <u>SK-9/E4.1</u>  McGinniss & Fleming Engineering, Inc.  <i>Mechanical · Electrical · Fire Protection · Plumbing</i>