

# **City of Tallahassee Underground Utilities and Public Infrastructure Engineering Division**

**Joe Sisk**



# What is Safe Routes To Schools?

**Federally and privately funded program administered by the National Center For Safe Routes To Schools through the Florida Department of Transportation (FDOT)**



# National Center For Safe Routes Schools

- Safe Routes to School is a growing movement throughout the United States.
- Concept and goal is to increase the number of children who walk or bicycle to school.
- Funding projects that remove the barriers that prevent walking/cycling

Those barriers include:

- Lack of infrastructure
- Unsafe Infrastructure
- Lack of programs that promote walking and bicycling through education/encouragement programs aimed at children, parents, and the community



# The Process

- Each year local municipalities from across the State of Florida submit applications to FDOT Safe Routes To Schools requesting funding for projects in their communities.
- The submittals are reviewed by the FDOT SRTS Program Staff and Transportation Engineers.
- If approved, the projects are funded in the five year work program by FDOT which may mean the money is not available for the project for several years. Many times the City partners with SRTS by funding the design of the projects.

# Previously Awarded Projects

In the 2015 cycle the City was awarded four projects:

- Sabal Palm Elementary
  - Pineview Elementary
  - Kate Sullivan Elementary
  - Ruediger Elementary
- Rankin Avenue  
Iamonia Street  
Alachua Avenue  
Branch Street

These projects are currently being constructed.

# 2018 Awarded Projects

In the 2018 cycle the City was awarded one project:

- Roberts Elementary                      Clarecastle Way

This project will be funded for design by FDOT in Fiscal year 2023



# 2019 Project Submittals

The City will submit three projects:

- **Sabal Palm Elementary**

Harris Street    Ridgeway Street    Dale Street    Villamore Avenue

- **Fairview Middle School**

Lakewood Drive North    Skylark Avenue    Falcon Drive

- **Pineview Elementary**

Callen Street    James Street    Bethune Street



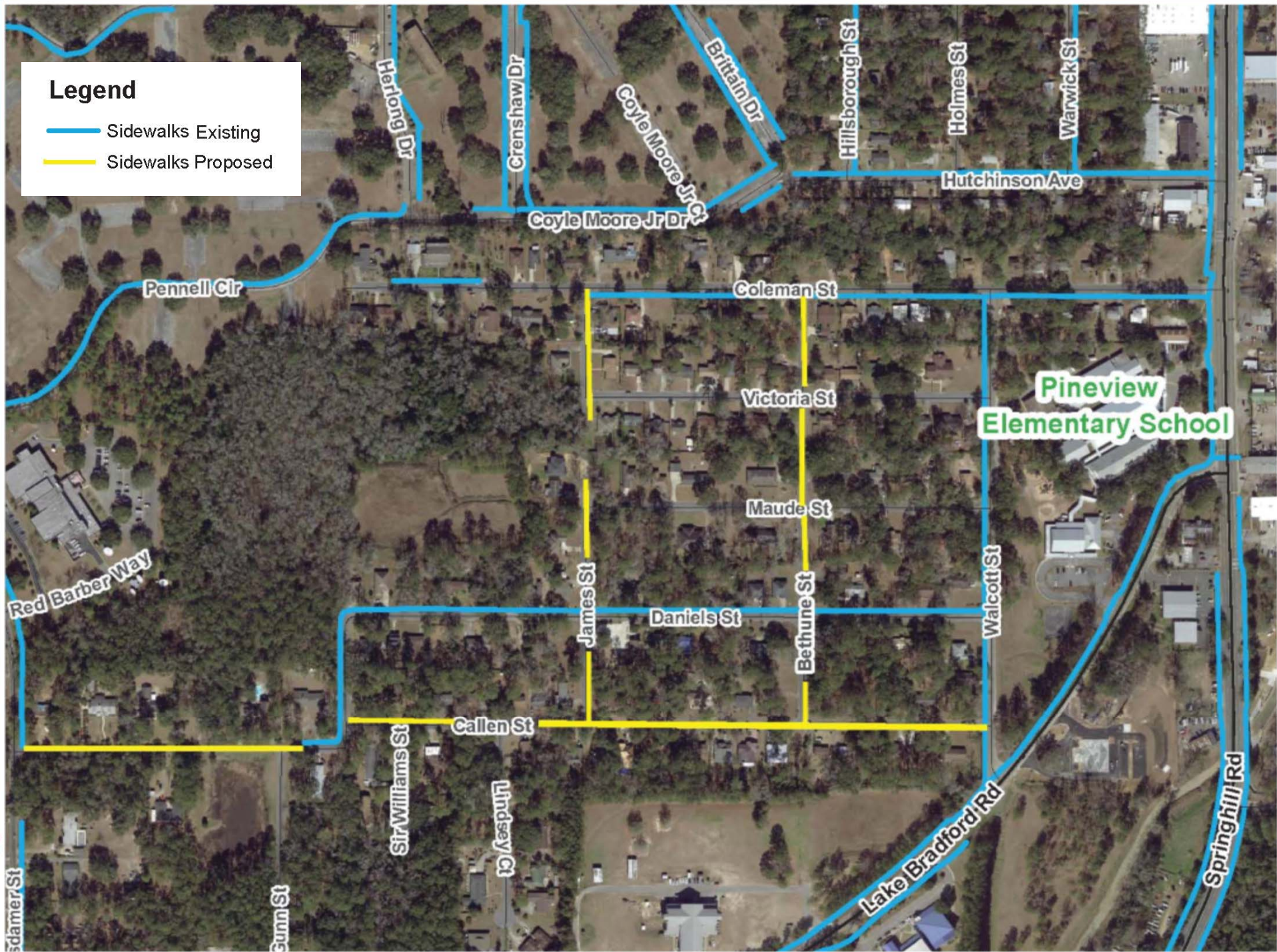












# How You Can Help

- Complete and Return Parent Surveys

Asking for your views on your children walking and bicycling to school.

- Encourage Kids to Participate In Student Travel Tallies  
Several days each week for 1-2 weeks teachers will ask students how they got to school.



# Questions?

## City of Tallahassee Underground Utilities and Public Infrastructure Engineering Division

850-891-2851

Eric Gooch, Program Engineer

[Eric.Gooch@Talgov.com](mailto:Eric.Gooch@Talgov.com)

Molly Levesque, Program Engineer

[Molly.Levesque@Talgov.com](mailto:Molly.Levesque@Talgov.com)

Joe Sisk, Engineer Designer

[Joe.Sisk@Talgov.com](mailto:Joe.Sisk@Talgov.com)

